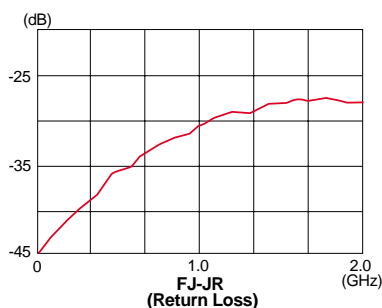
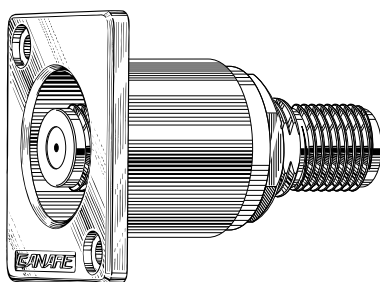


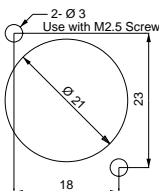
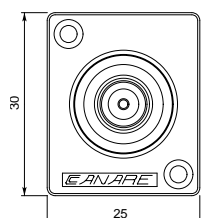
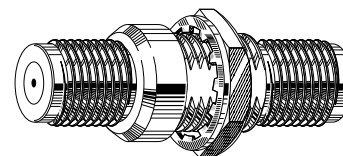
## FJ-JRU

75Ω F RECESSED Bulkhead Port  
 Jack (Female) to Jack (Female)  
 Mounts in Common Canare Hole Punch  
 Totally Isolated from Panel  
 ≥26dB (≤1.1 VSWR) DC-2GHz

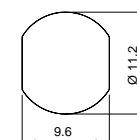
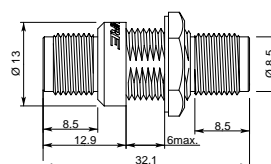
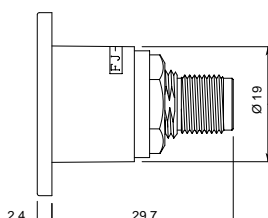


## FJ-JR

75Ω F Bulkhead Port  
 Jack (Female) to Jack (Female)  
 Double D Hole Punch  
 IU-7/16 Iso Bushing  
 ≥26dB (≤1.1 VSWR) DC-2GHz

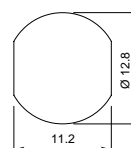


Canare Recessed  
 Panel Mount Hole Dimensions



Double D  
 Panel Mount Hole Dimensions  
 (without IU-7/16 Iso Bushing)

75Ω F JACK NOMINAL SPECIFICATIONS								
Bandwidth VSWR Return Loss DC to 2GHz	Center Contact Material Plating	Body Material Plating	Dielectric	Flange Material Plating	Insulation resistance at 500V DC	Voltage rating for 1 minute	Center contact resistance	Outer contact resistance
≤ 1.1 > 26dB	Beryllium Copper Cold	Brass Nickel	PTFE	DieCast AL Nickel	> 500MΩ	500V AC(rms)	< 5mΩ	< 5mΩ



Double D  
 Panel Mount Hole Dimensions  
 (with IU-7/16 Iso Bushing)



FJ-JRU

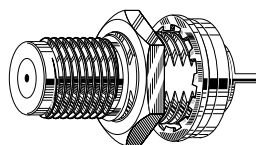


FJ-JR

## 75Ω F PC MOUNT RECEPTACLE

## APPLICATIONS

- OEM
- BROADBAND EQUIPMENT
- CABLE MODEMS
- RF BOXES
- SATELLITE SYSTEMS

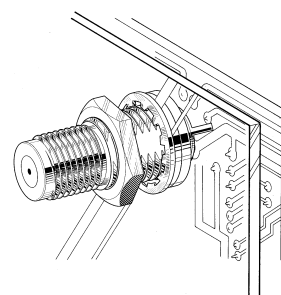


Canare introduces a new high precision 75Ω F Receptacle for PC Board solder trace hole mounting. This new connector is impedance matched and perfectly suited for use in all advanced generations of Digital Video Broadcast Equipment as well as other applications where high bandwidth and low Return Loss is required.

For complete model listings & detailed product  
 specifications, request Canare's  
 "OEM Parts Catalog"

## FEATURES

≥26 dB Return Loss (≤1.1 VSWR); DC to 2GHz  
 Securely mounts to PCB with Chassis Support  
 Gold Plated Beryllium Copper center contact

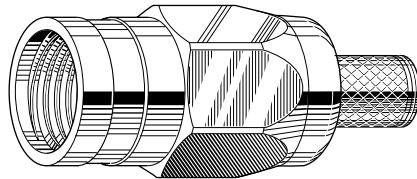


## APPLICATIONS

- DIGITAL BROADBAND
- SATELLITE SYSTEMS
- RF EQUIPMENT
- CABLE MODEMS
- HEADENDS

## FEATURES

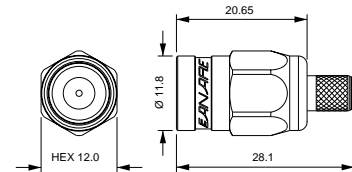
- ≥26dB Return Loss DC–2GHz (≤1.1 VSWR)
- Crimp Pin & Sleeve Design
- Use with Solid or Stranded Center 75Ω Coax
- Center Pin Snap Locks into Connector
- Superior cable pull strength



FP-C



F MODEL	PINS	SLEEVES
FP-C3	BN1002A	BN7003A
FP-C3F	BN1003A	BN7003A
FP-C4	BN1003A	BN7015A
FP-C4F	BN1004A	BN7015A
FP-C5	BN1004A	BN7016
FP-C51	BN1004A	BN7002
FP-C53A	BN1005A	BN7046
FP-C55A	BN1005A	BN7045
FP-C5F	BN1005A	B75004
FP-C7FA	BN1030	BN7021A
FP-C71A	BN1041	BN7021A



75Ω F CRIMP PLUG NOMINAL SPECIFICATIONS											
Type	Imp (Ω)	Bandwidth VSWR Return Loss	Body Material Plating	Center Contact Material Plating	Dielectric	Crimp Sleeve Material Plating	Cable Retention lbs. (kgs)	Insulation resistance at 500V DC	Voltage rating for 1 minute	Center contact resistance	Outer contact resistance
Dual Crimp Pin & Sleeve	75	DC to 2GHz ≤ 1.1 > 26 dB	Brass Nickel	Brass Gold	PTFE	Copper Tin	> 55 > 24.9	> 500MΩ	500V AC(rms)	< 5mΩ	< 5mΩ



Most F connectors on the market utilize a coaxial cable's solid inner conductor as the plug's center contact pin. This design can cause near and long term problems from center conductor nicks, bending, dielectric migration, metal fatigue and contact corrosion. Furthermore, this type of commonly installed F connector may also produce signal degradation, outages, poor picture quality, RF leakage problems and most importantly... *an expensive service call.*

To meet the growing demands of advanced Digital Broadband equipment, Canare has developed the world's first precision, high reliability 75Ω F Connector. Electromechanically stable (nickel over brass body, high quality tapped threads, extra wide torque nut, gold crimp pin, extra long crimp sleeve), our FP-C is quick to install using the same Canare strip & crimp tools as our standard 75Ω BNC and RCA plugs.

Canare true 75Ω F Connectors are impedance matched with excellent Return Loss characteristics and can easily handle future "Smart House" RF broadband multimedia networks to 1 GHz and beyond. Will mate with SCTE approved standard F receptacles.

		75Ω F Crimp Plugs					CABLE / CONNECTOR / TOOLING X-Reference Chart								
		FP-C3		FP-C3F		FP-C4	FP-C4F		FP-C5	FP-C51	FP-C53A	FP-C55A	FP-C5F	FP-C7FA	FP-C71A
CANARE CABLE															
A2V1 A2V2-L V-3C		L-3C2VS	L-3CFB	A3V1-FB A3V2-FB V-3CFB	LV-61S	L-4CFB	V-4CFB	V-5C				L-5CFB V-5CFB	L-7CFB		
BELDEN															
					8241 8279 88241	1505A 8241F 8212 9167 9259 9659	1506A		8281 88281 728A 8281B	1694A 9066 9114 89120 9116 9248	1695A 87120 89120 633948 9116P	9290 1189A			1617A 7731A 9011 9064 9252 87292 89232
COMMSCOPE															
						2000 5553 5565 5572 556510	2065V		7501 7506	2227K/V 2229V 5729 5765 F690BVV	2275V 2276V 2277V 2279V	5731			5906 5940 2285K 5914 F115SVV
COAX CABLE STRIPPERS	TS100E TS-V3C	TS100E TS-3C	TS100E TS-3C	TS100E TS-V3C	TS100E TS-4C	TS100E TS-4C	TS100E TS-3C	TS100E TS-4C	TS100E TS-5C	TS100E TS-31C	TS100E TS-5C	TS100E TS-5C	TS100E		
TOOL	TC-1	○	○	○	○	○	○	○	○	○	○	○	○	○	○
DIE SETS	TCD-3C	●	●	●	●										
	TCD-35CA	●	●	●	●				●		●	●			
	TCD-4C					●	●	●							
	TCD-451CA					●	●	●		●					
	TCD-5CF												●		
TCD-7CA													●	●	●

● Alternate Die Set.  
Note: All Stripper Models are Pre-Set for Canare 75Ω F Crimp Plug Dimensions