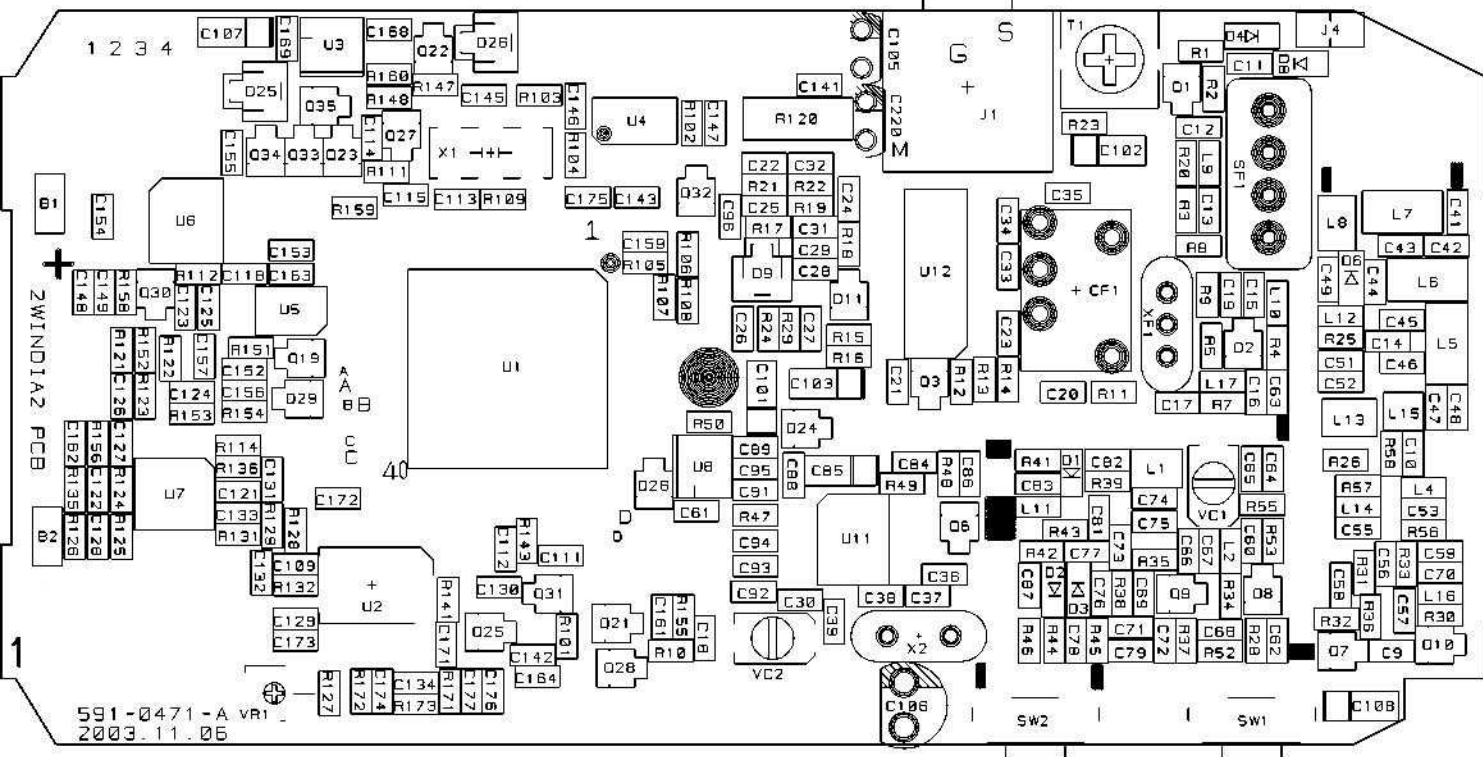


VT-43#2.0 REF. MAP

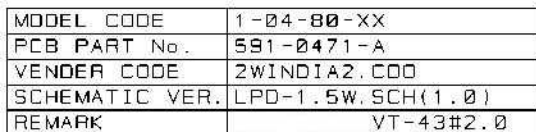
2003.11.11



MODEL CODE	1-04-80-XX
PCB PART No.	591-0471-A
VENDER CODE	ZWINDIA2.C00
SCHEMATIC VER.	LPD-1.5W.SCH(1.0)
REMARK	VT-43#2.0

APPROVED

2003. 11. 11

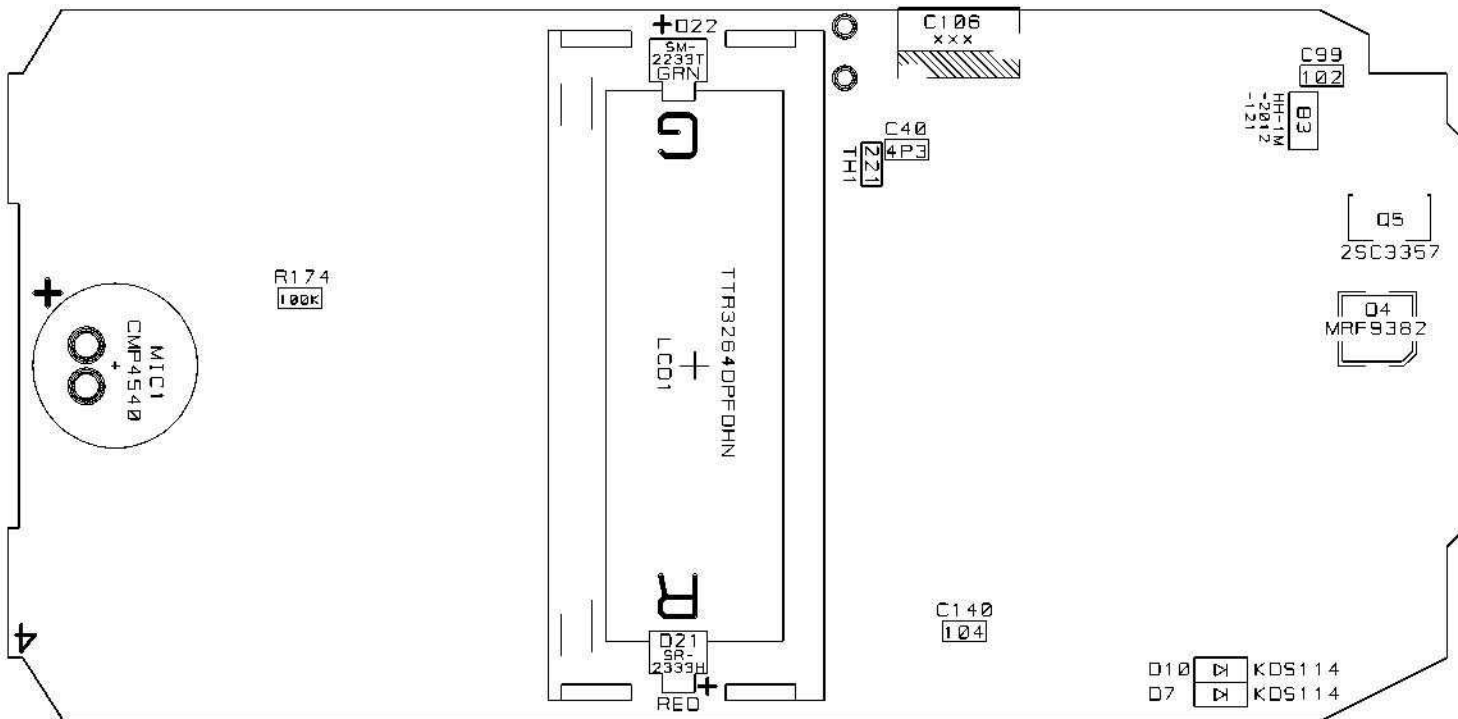


APPROVED

VT-43#2.0

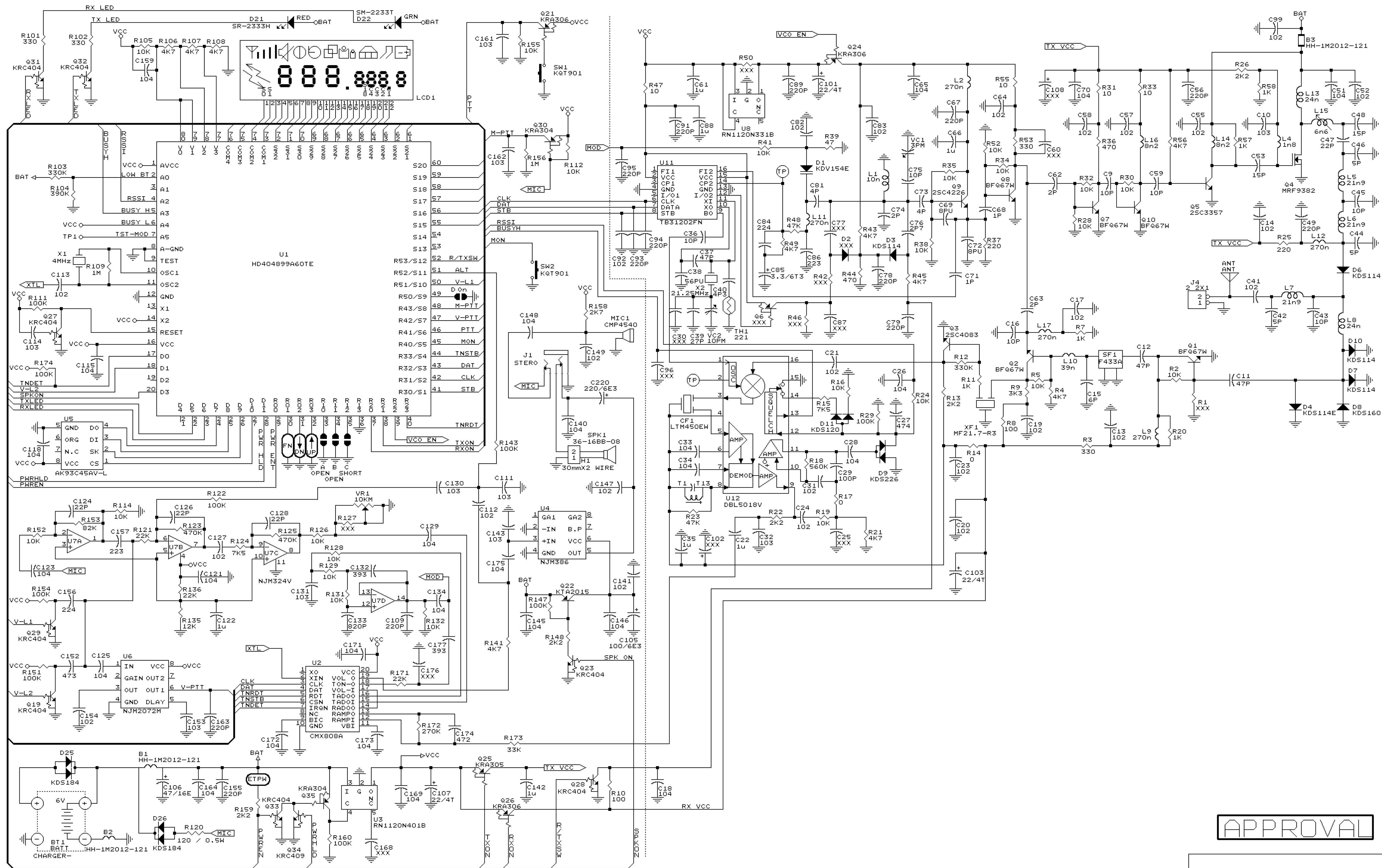
BOTTOM SIDE REF./VALUE MAP

2003.11.11



MODEL CODE	1-04-80-XX
PCB PART No.	591-0471-A
VENDER CODE	2WINDIA2.COD
SCHEMATIC VER.	LPD-1.5W.SCH(1.0)
REMARK	VT-43#2.0

APPROVED



APPROVAL

PCB : 591-0471-X		
Title LPD-1.5W(RUSSIA-VT43)		
Size	Document Number	REV
B	LPD_1.5W.SCH	1.0
Date: February 28, 2004	Sheet	1 of 1

APPROVED		HIGH-END SERIES (1-04-XX-XX)		MODEL CODE		1-04-80-X	
		LCD TYPE		SCHEMATIC		LPD-1.5W.SCH (Rev 1.0)	
		INDIA(2W)		CORRECT DATE		2003-11-11	
No.	승인원	NAME & DESCRIPTION	VENDOR CODE	MAKER	자재	VT-43#2.0 (LPD_1.5W)	
1	052-0002-1	RES. CHIP 0 Ω ±5% 1/16W 0603	CR 1/16 000 JT	PHILIPS	S	2	R14, 17
2	052-1002-1	RES. CHIP 10 Ω ±5% 1/16W 0603	CR 1/16 100 JT	PHILIPS	S	4	R31, 33, 47, 55
3	052-1012-1	RES. CHIP 100 Ω ±5% 1/16W 0603	CR 1/16 101 JT	PHILIPS	S	2	R8, 10
4	052-1022-1	RES. CHIP 1 KΩ ±5% 1/16W 0603	CR 1/16 102 JT	PHILIPS	S	5	R7, 11, 20, 57, 58
5	052-1032-1	RES. CHIP 10 KΩ ±5% 1/16W 0603	CR 1/16 103 JT	PHILIPS	S	24	R2, 5, 16, 19, 24, 28, 30, 32, 34, 35, 38, 41, 52, 105, 112, 114, 126, 127, 128, 129, 131, 132, 152, 155
6	052-1042-1	RES. CHIP 100 KΩ ±5% 1/16W 0603	CR 1/16 104 JT	PHILIPS	S	9	R29, 111, 122, 143, 147, 151, 154, 160, 174
7	052-1052-1	RES. CHIP 1 MΩ ±5% 1/16W 0603	CR 1/16 105 JT	PHILIPS	S	2	R109, 156
8	052-1232-1	RES. CHIP 12 KΩ ±5% 1/16W 0603	CR 1/16 123 JT	PHILIPS	S	1	R135
9	052-2212-1	RES. CHIP 220 Ω ±5% 1/16W 0603	CR 1/16 221 JT	PHILIPS	S	2	R25, 37
10	052-2222-1	RES. CHIP 2.2 KΩ ±5% 1/16W 0603	CR 1/16 222 JT	PHILIPS	S	5	R13, 22, 26, 148, 159
11	052-2232-1	RES. CHIP 22 KΩ ±5% 1/16W 0603	CR 1/16 223 JT	PHILIPS	S	3	R121, 136, 171
12	052-2722-1	RES. CHIP 2.7 KΩ ±5% 1/16W 0603	CR 1/16 272 JT	PHILIPS	S	1	R158
13	052-2742-1	RES. CHIP 270 KΩ ±5% 1/16W 0603	CR 1/16 274 JT	PHILIPS	S	1	R172
14	052-3312-1	RES. CHIP 330 Ω ±5% 1/16W 0603	CR 1/16 331 JT	PHILIPS	S	4	R3, 53, 101, 102
15	052-3322-1	RES. CHIP 3.3 KΩ ±5% 1/16W 0603	CR 1/16 332 JT	PHILIPS	S	1	R9
16	052-3332-1	RES. CHIP 33 KΩ ±5% 1/16W 0603	CR 1/16 333 JT	PHILIPS	S	1	R173
17	052-3342-1	RES. CHIP 330 KΩ ±5% 1/16W 0603	CR 1/16 334 JT	PHILIPS	S	2	R12, 103
18	052-3942-1	RES. CHIP 390 KΩ ±5% 1/16W 0603	CR 1/16 394 JT	PHILIPS	S	2	R18, 104
19	052-4702-1	RES. CHIP 47 Ω ±5% 1/16W 0603	CR 1/16 470 JT	PHILIPS	S	1	R39
20	052-4712-1	RES. CHIP 470 Ω ±5% 1/16W 0603	CR 1/16 471 JT	PHILIPS	S	2	R36, 44
21	052-4722-1	RES. CHIP 4.7 KΩ ±5% 1/16W 0603	CR 1/16 472 JT	PHILIPS	S	10	R4, 21, 43, 45, 49, 56, 106, 107, 108, 141
22	052-4732-1	RES. CHIP 47 KΩ ±5% 1/16W 0603	CR 1/16 473 JT	PHILIPS	S	2	R23, 48
23	052-4742-1	RES. CHIP 470 KΩ ±5% 1/16W 0603	CR 1/16 474 JT	PHILIPS	S	2	R123, 125
24	052-7522-1	RES. CHIP 7.5 KΩ ±5% 1/16W 0603	CR 1/16 752 JT	PHILIPS	S	2	R15, 124
25	052-8232-1	RES. CHIP 82 KΩ ±5% 1/16W 0603	CR 1/16 823 JT	PHILIPS	S	1	R153
26	056-1212-1	RES.CHIP 120 ohm +,-5% 1/2W 5025	RC21 0603 121 JT	PHILIPS	S	1	R120
27	075-1033-1	RES.SEMIFIXED CHIP 10 KΩ 3D1A	EVN5ESX50B14	MATSUSHITA	S	1	VR1
28	082-2212-1	THERMISTOR NTC CHIP 220Ω ±5% 3500 0603	NTH5G16P35A221J07TH	MURATA	S	1	TH1
29	114-1013-1	CAP ELECT 100uF/6.3V +-20% 5X7	SRJ 0J VB 100M	삼영전자	I	1	C105
30	114-2213-3	CAP ELECT 220uF/6.3V +-20% 5X11	SHL 0J VB 220M	삼영전자	I	1	C220
31	114-4703-6	CAP ELECT 47uF/16V +-20% 5X7	SRJ 1C VB 47M	삼영전자	I	1	C106
32	118-0303-1	CAP.TANTAL CHIP 3.3 uF/10V ±20% SIZE:A	TA-010TCMS3R3M-AL	FUJITSU	S	1	C85
33	118-2201-1	CAP.TANTAL CHIP 22 uF/4V ±20% SIZE:A	TA-004TCMS220M-AL	FUJITSU	S	3	C101, 103, 107
34	152-0103-1	CAP.CERAMIC CHIP 1 pF ±10%0603	0603 CG 010B 9BB-M	PHILIPS	S	2	C68, 71
35	152-0202-1	CAP.CERAMIC CHIP 2 pF ±5% 0603	0603 CG 020B 9BB-M	PHILIPS	S	3	C62, 63, 74
36	152-0272-1	CAP.CERAMIC CHIP 2.7 pF ±5% 0603	0603 CG 279B 9BB-M	PHILIPS	S	1	C76
37	152-0402-1	CAP.CERAMIC CHIP 4 pF ±5% 0603	0603 CG 040C 9BB-M	PHILIPS	S	2	C73, 81
38	152-0432-1	CAP.CERAMIC CHIP 4.3 pF ±5% 0603	0603 CG 439C 9BB-M	PHILIPS	S	1	C40
39	152-0502-1	CAP.CERAMIC CHIP 5 pF ±5% 0603	0603 CG 050C 9BB-M	PHILIPS	S	3	C42, 44, 46
40	152-0602-1	CAP.CERAMIC CHIP 6 pF ±5% 0603	0603 CG 060C 9BB-M	PHILIPS	S	1	C15
41	152-0802-6	CAP.CERAMIC CHIP 8 pF ±5% 0603 N750	0603 UJ 080C 9BB-M	PHILIPS	S	2	C69, 72
42	152-1002-1	CAP.CERAMIC CHIP 10 pF ±5% 0603	0603 CG 100D 9BB--	PHILIPS	S	7	C9, 16, 36, 43, 45, 59, 75
43	152-1012-1	CAP.CERAMIC CHIP 100 pF ±5% 0603	0603 CG 101J 9BB--	PHILIPS	S	1	C29
44	152-1022-1	CAP.CERAMIC CHIP 1000 pF ±5% 0603	0603 2R 102J 9BB--	PHILIPS	S	26	C13, 14, 17, 19, 20, 21, 23, 24, 31, 41, 52, 55, 57, 58, 64, 82, 83, 92, 99, 112, 113, 127, 141, 147, 149, 1
45	152-1032-1	CAP.CERAMIC CHIP 0.01 uF ±5% 0603	0603 2R 103J 8BB--	PHILIPS	S	10	C10, 32, 111, 114, 130, 131, 143, 153, 161, 162
46	152-1045-1	CAP.CERAMIC CHIP 0.1 uF ±80%0603	0603 2F 104Z 8BB--	PHILIPS	S	26	C18, 26, 28, 33, 34, 51, 65, 70, 115, 118, 121, 123, 125, 129, 134, 140, 145, 146, 148, 159, 164, 169, 171, 172, 173, 175

APPROVED		HIGH-END SERIES (1-04-XX-XX)	MODEL CODE	1-04-80-X			
		LCD TYPE	SCHEMATIC	LPD-1.5W.SCH (Rev 1.0)			
		INDIA(2W)	CORRECT DATE	2003-11-11			
No.	승인원	NAME & DESCRIPTION	VENDOR CODE	MAKER	자재	VT-43#2.0 (LPD_1.5W)	
47	152-1055-1	CAP.CERAMIC CHIP 1 uF ±80%0603	0603 2F 105Z 7BB--	PHILIPS	S	7	C22,35,61,66,88,122,142
48	152-1502-1	CAP.CERAMIC CHIP 15 pF ±5% 0603	0603 CG 150J 9BB--	PHILIPS	S	2	C48,53
49	152-2202-1	CAP.CERAMIC CHIP 22 pF ±5% 0603	0603 CG 220J 9BB--	PHILIPS	S	4	C47,124,126,128
50	152-2212-1	CAP.CERAMIC CHIP 220 pF ±5% 0603	0603 CG 221J 9BB--	PHILIPS	S	13	C49,56,67,78,79,89,91,93,94,95,109,155,163
51	152-2232-1	CAP.CERAMIC CHIP 0.022uF ±5% 0603	0603 2R 223J 8BB--	PHILIPS	S	2	C86,157
52	152-2245-1	CAP.CERAMIC CHIP 0.22uF ±80%0603	0603 2F 224Z 8BB--	PHILIPS	S	2	C84,156
53	152-2702-1	CAP.CERAMIC CHIP 27 pF ±5% 0603	0603 CG 270J 9BB--	PHILIPS	S	1	C39
54	152-3932-1	CAP.CERAMIC CHIP 0.039uF ±5% 0603	0603 2R 393J 7BB--	PHILIPS	S	2	C132,177
55	152-4702-1	CAP.CERAMIC CHIP 47 pF ±5% 0603	0603 CG 470J 9BB--	PHILIPS	S	3	C11,12,37
56	152-4722-1	CAP.CERAMIC CHIP 4700 pF ±5% 0603	0603 2R 472J 9BB--	PHILIPS	S	1	C174
57	152-4733-1	CAP.CERAMIC CHIP 0.047uF ±10% 0603	0603 2R 473K 7BB--	PHILIPS	S	1	C152
58	152-4745-1	CAP.CERAMIC CHIP 0.47uF ±80%0603	0603 2F 474Z 8BB--	PHILIPS	S	1	C27
59	152-5602-6	CAP.CERAMIC CHIP 56 pF ±5% 0603 N750	0603 UJ 560J 9BB--	PHILIPS	S	1	C38
60	152-8212-1	CAP.CERAMIC CHIP 820 pF ±5% 0603	0603 2R 821J 9BB--	PHILIPS	S	1	C133
61	175-0303-2	CAP.TRIMER CHIP 3pF NPO (BROWN)	ECRKN003A61X	MATSUSHITA	S	1	VC1
62	175-1003-2	CAP.TRIMER CHIP 10pF N400 (WHITE)	ECRKN010C61X	MATSUSHITA	S	1	VC2
63	212-0015-8	IC MPU MASK 4bit 16K(JSP-408) TQFP80	HD404899A-60TE	HITACHI	S	1	U1
64	221-0009-1	IC EEPROM 1.8~5.5V 1Kbit TSSOP-08	AK93C45AV-L	ASAHI-KASEI	S	1	U5
65	240-0001-1	IC AUDIO AMP 300mW SO-08	NJM386M-TE2	JRC	S	1	U4
66	241-0009-1	IC OP AMP QUAD SSOP-14	NJM324V-TE2	JRC	S	1	U7
67	242-0003-1	IC PLL DUAL 520MHz SSOP-16	TB31202FN	TOSHIBA	S	1	U11
68	242-0008-3	IC IF LOW VOLTAGE FM IF SO-16	DBL5018V	DAEWOO	S	1	U12
69	242-0032-1	IC CCTSS TONE EN/DECODER SSOP-20	CMX808AE3	CML	S	1	U2
70	251-0001-1	IC VOX(AUDIO LEVEL SENSOR)-36bB SO-08	NJM2072-TE1	JRC	S	1	U6
71	264-0332-1	IC REGULATOR LOW DROP 3.3V SOT-23-5	R1120N331B-TR	RICOH	S	1	U8
72	264-0401-1	IC REGULATOR LOW DROP 4.0V SOT-235	R1120N401B-TR	RICOH	S	1	U3
73	311-0014-1	TR RF NPN 4.5GHz SOT-323 MK:R25	2SC4226(M)-T1(R25)	NEC	S	1	Q9
74	311-0015-1	TR RF NPN 7.5GHz SOT-323 MK:WV2	BFQ67W	VISHAY	S	5	Q1,2,7,8,10
75	311-0005-1	TR NPN, f=1GHz, Gain:8dB, Vce:10V, Ic:7mA	2SC3357-T1(RE)	NEC	S	1	Q5
76	311-0020-1	TR RF NPN 3.2GHz SOT-323 MK:1DN	2SC4083N-T106	ROHM	S	1	Q3
77	312-0010-1	FET RF N-MOSFET	MRF9382T1	MOTOROLA	S	1	Q4
78	315-0007-1	TR GEN.SMALL PNP 500mA SOT-323 MK:Z4	KTA2015Y	KEC	S	1	Q22
79	319-0018-1	BRT PNP B:47K,47K SOT-323 MK:PD	KRA304	KEC	S	2	Q30,35
80	319-0019-1	BRT PNP B:2K2,47K SOT-323 MK:PE	KRA305	KEC	S	1	Q25
81	319-0020-1	BRT PNP B:4K7,47K SOT-323 MK:PF	KRA306	KEC	S	3	Q21,24,26
82	319-1018-1	BRT NPN B:47K,47K SOT-323 MK:ND	KRC404	KEC	S	8	Q19,23,27,28,29,31,32,33
83	319-1022-1	BRT NPN B:47K,22K SOT-323 MK:NJ	KRC409	KEC	S	1	Q34
84	342-0001-1	DIODE SWITCHING DUAL SOT-23 MK:C3	KDS226	KEC	S	1	D9
85	342-0008-1	DIODE SWITCHING USC MK:UF	KDS160	KEC	S	1	D8
86	342-0002-1	DIODE SWITCHING DUAL SOT-23 MK:B3	KDS184	KEC	S	2	D25,26
87	342-0010-1	DIODE SWITCHING DUAL SOT-323 MK:A3	KDS120	KEC	S	1	D11
88	343-0006-1	DIODE PIN SINGLE USC MK:UD	KDS114	KEC	S	4	D3,6,7,10
89	343-0007-1	DIODE PIN SINGLE ESC MK:UD	KDS114E	KEC	S	1	D4
90	348-0007-3	DIODE VARICAP 2V 14.5pF Grade-B ESC MK:UA	KDV154E(Grade B)	KEC	S	1	D1
91	352-0402-1	LED CHIP RED HIGH BRIGHT 2.9X1.3 SOT-23	SR2333-H(T)	광전자	S	1	D21
92	355-0402-1	LED CHIP GREEN DIFF. LENSE 2.9X1.3 SOT-23	SM2233(T)	광전자	S	1	D22
93	366-0009-3	LCD JDF414H/M SEG22 COM4 36X14.5X0.7T	60351-410A0(OTC-2035)	ELEC & ELTEK	I	1	LC01

APPROVED		HIGH-END SERIES (1-04-XX-XX)	MODEL CODE		1-04-80-X		
		LCD TYPE	SCHEMATIC		LPD-1.5W.SCH (Rev 1.0)		
		INDIA(2W)	CORRECT DATE		2003-11-11		
No.	승인원	NAME & DESCRIPTION	VENDOR CODE	MAKER	자재		VT-43#2.0 (LPD_1.5W)
94	409-2161-1	X-TAL 21.2503MHz (±2.5PPM) 0-60 TR-1-6	TR-1-6 21.2503MHz	TEW	I	1	X2
95	411-2168-1	FILTER X-TAL 21.7MHz TR-1-6(3) ±7.5KHz	MF21.7R3	TOKYO DENPA	I	1	XF1
96	412-4546-2	FILTER CERAMIC 450kHz 7.5k 6POL	LTM450EW	CQ	I	1	CF1
97	415-4371-2	FILTER SAW 433.5MHz ±2MHz F-11 11X5X4	KF433	KEC	S	1	SF1
98	431-1014-1	COIL AIR SPRING 0.32 x 0.9 x 4TR 10nH	E2-320904TR	UCHIDA	S	1	L1
99	431-1015-1	COIL AIR SPRING 0.28 x 1.1 x 6TR 24nH	E2-281106TR	UCHIDA	S	2	L8, 13
100	431-1018-1	COIL AIR SPRING 0.45 x 1.4 x 2TL 6n6H	E2-451402TL, 6n6H	UCHIDA	S	1	L15
101	431-1019-1	COIL AIR SPRING 0.45 x 1.4 x 6TL 21n9H	E2-451405, 21.9nH	UCHIDA	S	3	L5,6,7
102	434-0001-1	COIL CAN VARIABLE 455kHz 6.2X6.2X6.2H	5PLC-K5001Z-KR(T13)	TOKO	I	1	T1
103	452-0184-7	INDUCTOR CHIP CERAMIC 1n8H ±10% 1608	1608GC2T-1N8S	PILKOR	S	1	L4
104	452-0822-7	INDUCTOR CHIP CERAMIC 8.2 nH ± 5% 1608	1608GC2T8N2J	PILKOR	S	2	L14, 16
105	452-3902-7	INDUCTOR CHIP CERAMIC 39 nH ± 5% 1608	1608GC2T39NJ	PILKOR	S	1	L10
106	452-2712-7	INDUCTOR CHIP CERAMIC 270 nH ± 5% 1608	1608GC2TR27J	PILKOR	S	5	L2,9,11,12,17
107	453-1216-1	BEAD CHIP FERRITE 120ohm 2012(0805)	HH-1M2012-121	CERATECH	S	3	B1,2,3
108	526-0006-1	SWITCH TACT 200gf SMD 8X3.5X3.5	KTQ901	PRIME	S	2	SW1,2
109	549-1010-2	JACK STEREO 2.5DIA 10 X 6.7 X 4	AT-JY2506-050-1	ASTRON	I	1	J1
110	518-0016-1	MIC CONDENSER 2.2k 4V -40dB 9.7x4.5 PIN	CMP-4540	BO SUNG	I	1	MIC1
111	513-0015-1	SPEAKER 16ohm 36mm 0.4W	36-16BB-08	기린전자	외주	1	SPK1
112	541-0206-1	CONNECTOR MALE ROUND 2mmx2 h6.2	F200-M-2SSGR(2 2*1)	FINE	I	1	J4
113	591-0471-A	PCB MAIN JDI-408H (2W-4 LAYER)	2WINDIA	경성	S	1	PCB
114	481-4331-1	ANTENNA HERICAL 433MHz ϕ 5.5x0.8x23.5T	DS-J433-USF	다선전자	A	1	ANT