

ICOM

INSTRUCTIONS

CLONING SOFTWARE

CS-F5060

■ Getting started

- ◇ This cloning software is designed to perform data setting and cloning for the IC-F5060/F6060 series VHF/UHF MOBILE TRANSCEIVERS.
- ◇ **HELP WINDOW:** CS-F5060 has a help window to describe functions and operation.

■ System requirements

To use this program, the following hardware and software are required:

PC

- Microsoft® Windows® 98/98SE/Me/2000/XP is installed
- With RS-232C serial port (D-sub 9-pin) or USB port

Other item

Optional OPC-1122 CLONING CABLE (RS-232C type) or
OPC-1122U* CLONING CABLE (USB type)

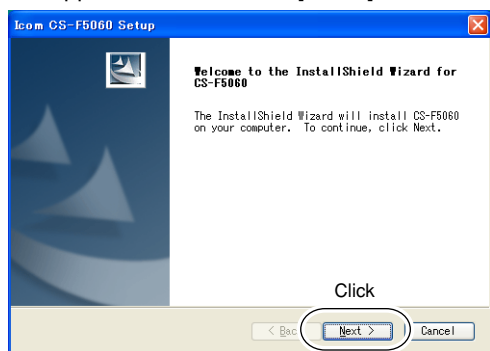
NOTE:

When using the OPC-1122U*, USB type cloning cables, USB driver installation is necessary. The driver is supplied with the OPC-1122U*. See the OPC-1122U* instruction manual for the installation details.

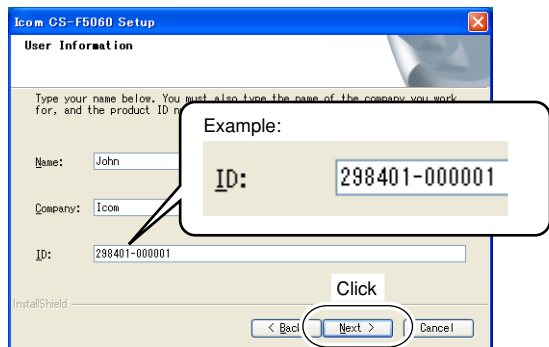
*The USB driver, supplied with the OPC-1122U, is not supported for Microsoft® Windows® 98.

■ Software installation

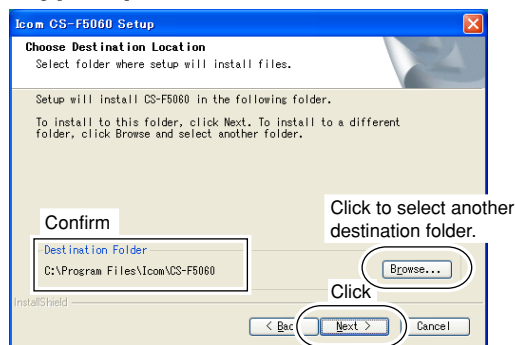
- ① Quit all applications when Windows is running.
- ② Insert the CD into the appropriate CD drive.
- ③ Double-click the "Setup.exe" contained in the CD.
- ④ The "Welcome to the InstallShield Wizard for CS-F5060" will appear as below. Click [Next>].



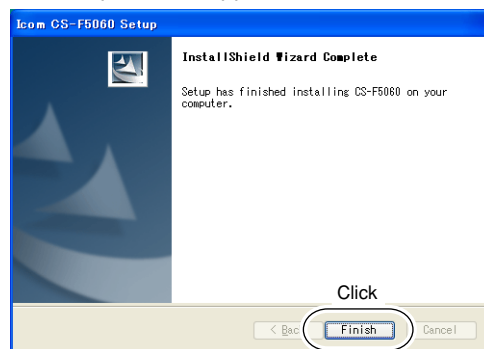
- ⑤ The "User Information" will appear as below, then type your name, your company name and the product ID number with the following manner. Then click [Next >].
 - ID number: 298401-(6 digit serial number)
 - e.g. the serial number on the CD is 000001, enter "298401-000001" as the ID number.



- ⑥ The "Choose Destination Location" will appear as below. Then click [Next>] to install the software to the destination folder. (e.g. C:\Program Files\Icom\CS-F5060)
 - Click [Browse...] to select another destination folder before clicking [Next >], if desired.



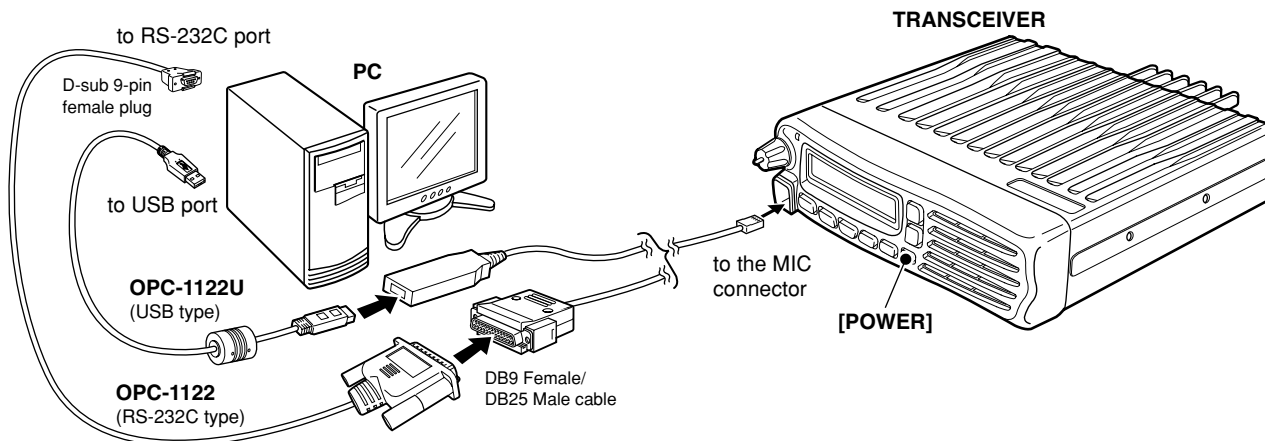
- ⑦ After the installation is completed, the "InstallShield Wizard Complete" will appear as below. Then click [Finish].



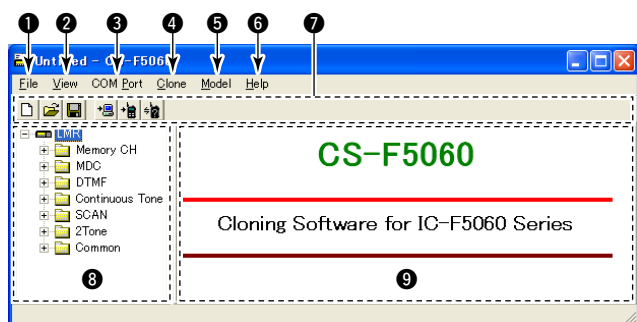
- ⑧ Eject the CD.
- ⑨ Program group 'CS-F5060' appears in the 'Programs' folder of the start menu, and 'CS-F5060' short cut icon appears on the desktop screen.

■ Connections

- /// All cloning operations are performed from the computer's keyboard— the operation required on the transceiver side is;
- /// ① First, connect the cloning cable as illustrated below.
 - /// ② And then push **[POWER]** to turn power ON.



■ Screen description



① FILE MENU [File]

Used for saving memory channel contents, printing the pre-programmed information or exiting the program, etc.

② VIEW MENU [View]

- Selects the displayed font size.
- Turn the tool bar indication ON or OFF.

③ COM PORT MENU [COM Port]

- Click to display the COM port (1 to 4 and More) setting dialog box.
- Set the transfer speed (Normal or High).

/// **NOTE:** 'Check the following' dialog box appears when the COM port is not set correctly.

④ CLONING MENU [Clone]

Click to display the cloning menu and cloning information dialog box.

⑤ MODEL MENU [Model]

Select the appropriate model type which you are going to clone.

⑥ HELP MENU [Help]

Click to display the help contents and cloning software revision information.

⑦ TOOL BAR

Shortcut buttons appear on the tool bar when the tool bar indication is turned ON in the [View] menu.

⑧ TREE VIEW SCREEN

Click the folder icon which you want to edit.

⑨ CONTENTS LIST SCREEN

Display the contents list (Memory CH information, Common settings, etc.).

■ Programming information

- We recommend that you should read out all the transceiver's data before start entering/editing parameters even the transceiver is factory fresh. This avoids rare glitches which might cause programming errors when writing back the altered parameters.

- Select the model type which you are going to clone from; LMR (2Tone), LMR (LTR), LMR (Digital), PMR (5Tone/DTMF) and BIIS PMR.

- /// LMR : Land Mobile Radio. 2Tone, LTR®, MDC and Digital functions are available.
- /// PMR : Private Mobile Radio. 5Tone and MDC functions are available.
- /// BIIS PMR: Binary Interchange of Information and Signaling. MSK and 5Tone functions are available.

- Double click the desired cell in the contents list screen directory, or right-click the cell to display the edit menu. Then click **[Edit... Enter]** to select and change the setting depends on the item.
- Click **[Help]** to display the help screen for the item.

Edit...	Enter
Copy	Ctrl+C
Paste	Ctrl+V
Up	Ctrl+Up
Down	Ctrl+Down
Clear	
Delete	Del
Insert	Ins
Help	

(Edit menu)

■ Cloning items

The **Memory CH**, **LTR®**, **Digital**, **MSK**, **MDC**, **DTMF**, **Continuous Tone**, **Scan**, **2Tone**, **5Tone** and **Common** items allow you to set the transceiver customized.

NOTE: The above instructions are for reference only. Please refer to the HELP file of the cloning software for the function or setting details.