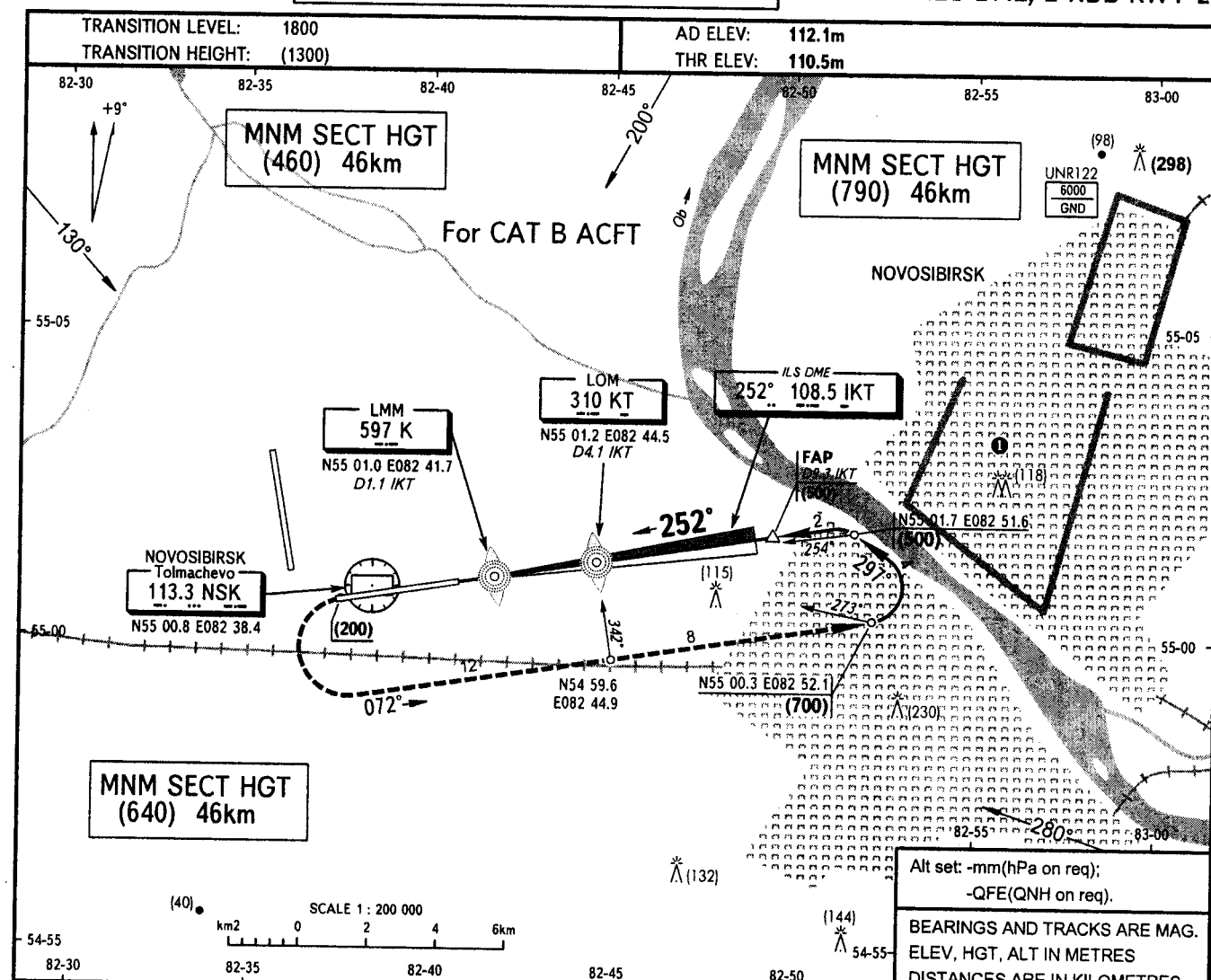


**INSTRUMENT
APPROACH
CHART - ICAO**

APPROACH FL 1800-5700 127.5
FL 1800-2100 (by ATC) 127.1
KRUG (Additionally serves as APP FL 1800-2100) 122.0
TOWER 118.5

NOVOSIBIRSK, RUSSIA
TOLMACHEVO
ILS DME, 2 NDB RWY 25



MISSED APPROACH
Climb on track 252° to (200), then
turn LEFT on track 072° climbing to
(700), then according to chart.

VORDME

K MAPt
D1.1 IKT 2 NDB

KT
D4.1 IKT

FAP
D9.3 IKT
(500)

HGT at LMM (70)

GPA 3°00'

RDH (TCH) 16.9

OCA/H		A	B	C	D
Straight-in Approach	CAT I	153(42)	156(45)		
	2 NDB				
	with FAF	215(104)	215(104)		
	WO FAF	395(284)	395(284)		

① Flights of civil ACFT over central part of the city
below (1200) are PROHIBITED.

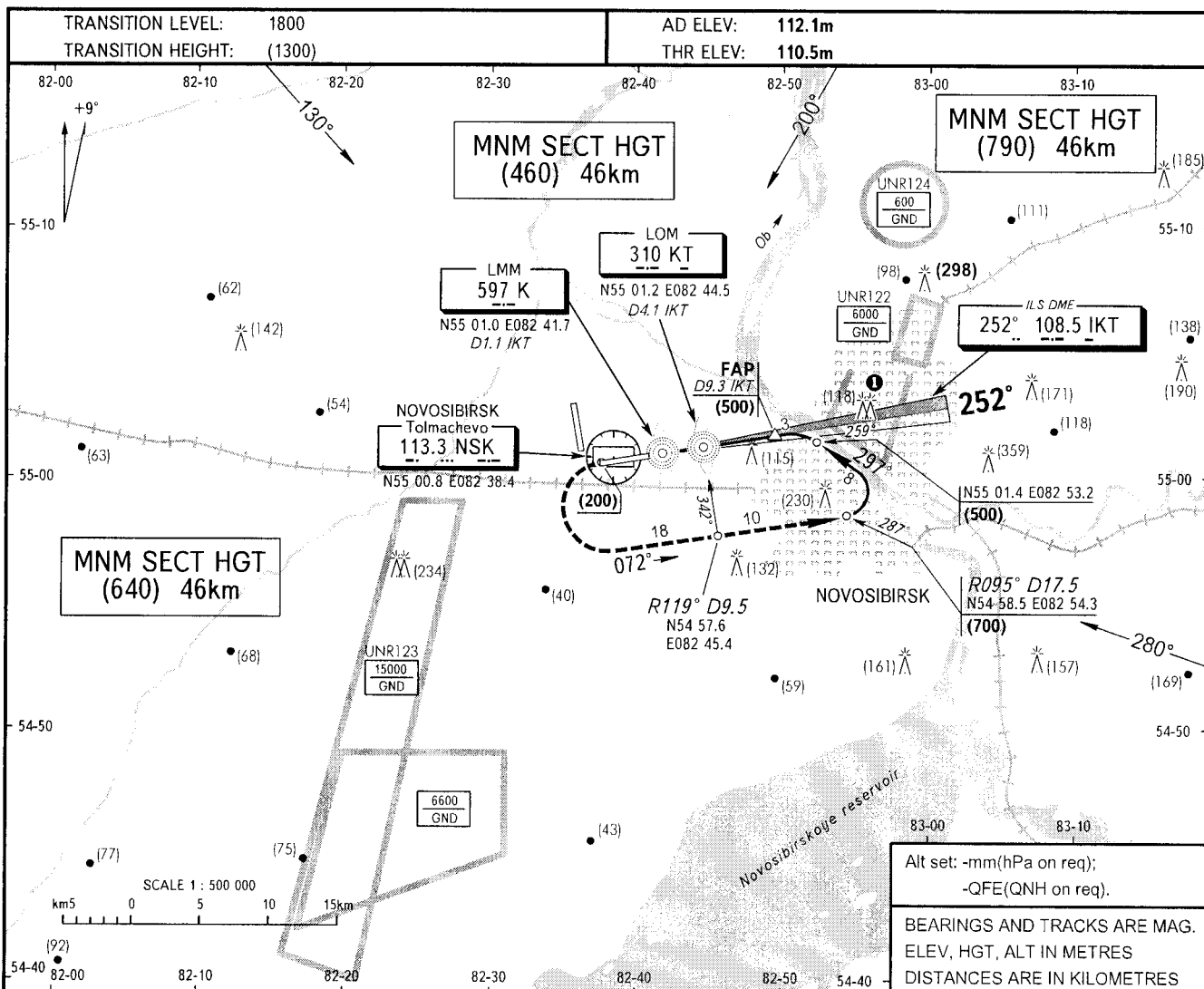
WARNING
FAF DIST is D11.8km NSK, by SRE is 11.0km.

GROUND SPEED	km/h	150	180	210	240	270	300	330	360	390	420	450
LOM-MAPt 2 NDB 2400m	min:sec	0.58	0.48	0.41	0.36	0.32	0.29	0.26	0.24	0.22	0.21	0.19
RATE OF DESCENT (Grad 5.2%)	m/sec	2.1	2.6	3.0	3.4	3.8	4.3	4.7	5.1	5.5	6.0	6.4

**INSTRUMENT
APPROACH
CHART - ICAO**

APPROACH FL 1800-5700 **127.5**
FL 1800-2100 (by ATC) **127.1**
KRUG (Additionally serves as APP FL 1800-2100) **122.0**
TOWER **118.5**

NOVOSIBIRSK, RUSSIA
TOLMACHEVO
ILS DME, 2 NDB RWY 25



MISSED APPROACH
Climb on track 252° to (200), then
turn LEFT on track 072° climbing to
(700), then according to chart.

VORDME

K MAPt 2 NDB
D1.1 IKT

KT
D4.1 IKT

FAP
D9.3 IKT
(500)

HGT at LMM (70)

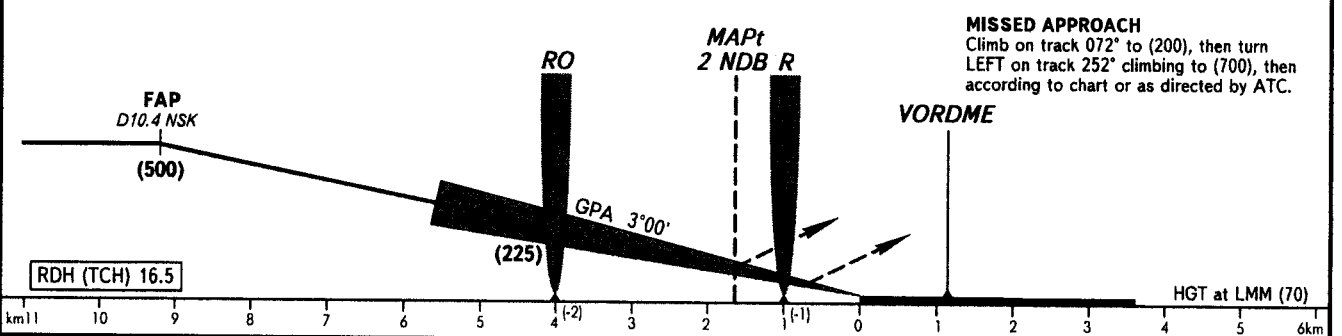
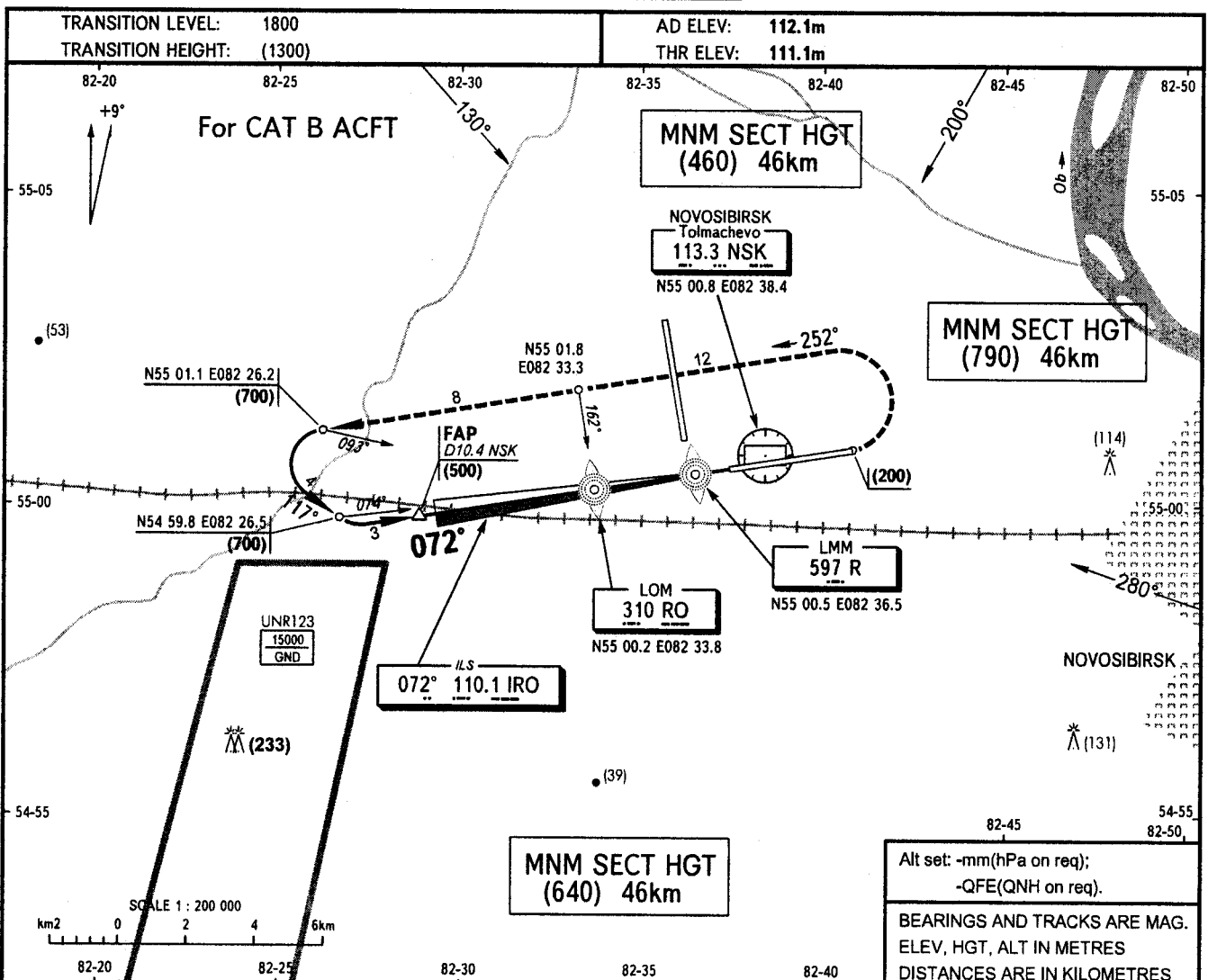
RDH (TCH) 16.9

OCA/H			A	B	C	D	E	<div><div><div>① Flights of civil ACFT over central part of the city below (1200) are PROHIBITED.</div><div>WARNING FAF DIST is D11.8km NSK, by SRE is 11.0km.</div></div></div>						
Straight-in Approach	CAT I				159(48)	162(51)	165(54)							
	2 NDB	with FAF			215(104)	215(104)	215(104)							
		WO FAF			395(284)	395(284)	395(284)							
GROUND SPEED			km/h	150	180	210	240	270	300	330	360	390	420	450
LOM-MAPt 2 NDB 2400m			min:sec	0.58	0.48	0.41	0.36	0.32	0.29	0.26	0.24	0.22	0.21	0.19
RATE OF DESCENT (Grad 5.2%)			m/sec	2.1	2.6	3.0	3.4	3.8	4.3	4.7	5.1	5.5	6.0	6.4

**INSTRUMENT
APPROACH
CHART - ICAO**

APPROACH FL 1800-5700 **127.5**
FL 1800-2100 (by ATC) **127.1**
KRUG (Additionally serves as APP FL 1800-2100) **122.0**
TOWER **118.5**

NOVOSIBIRSK, RUSSIA
TOLMACHEVO
ILS, 2 NDB RWY 07



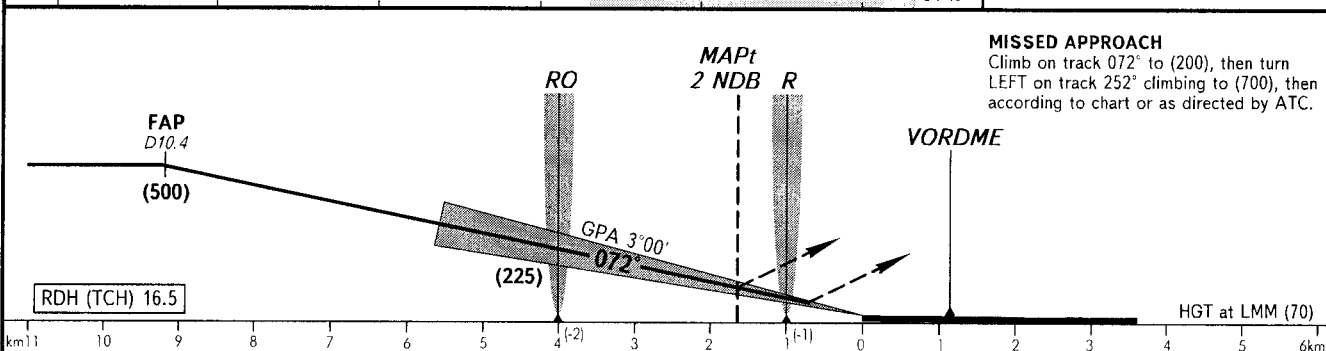
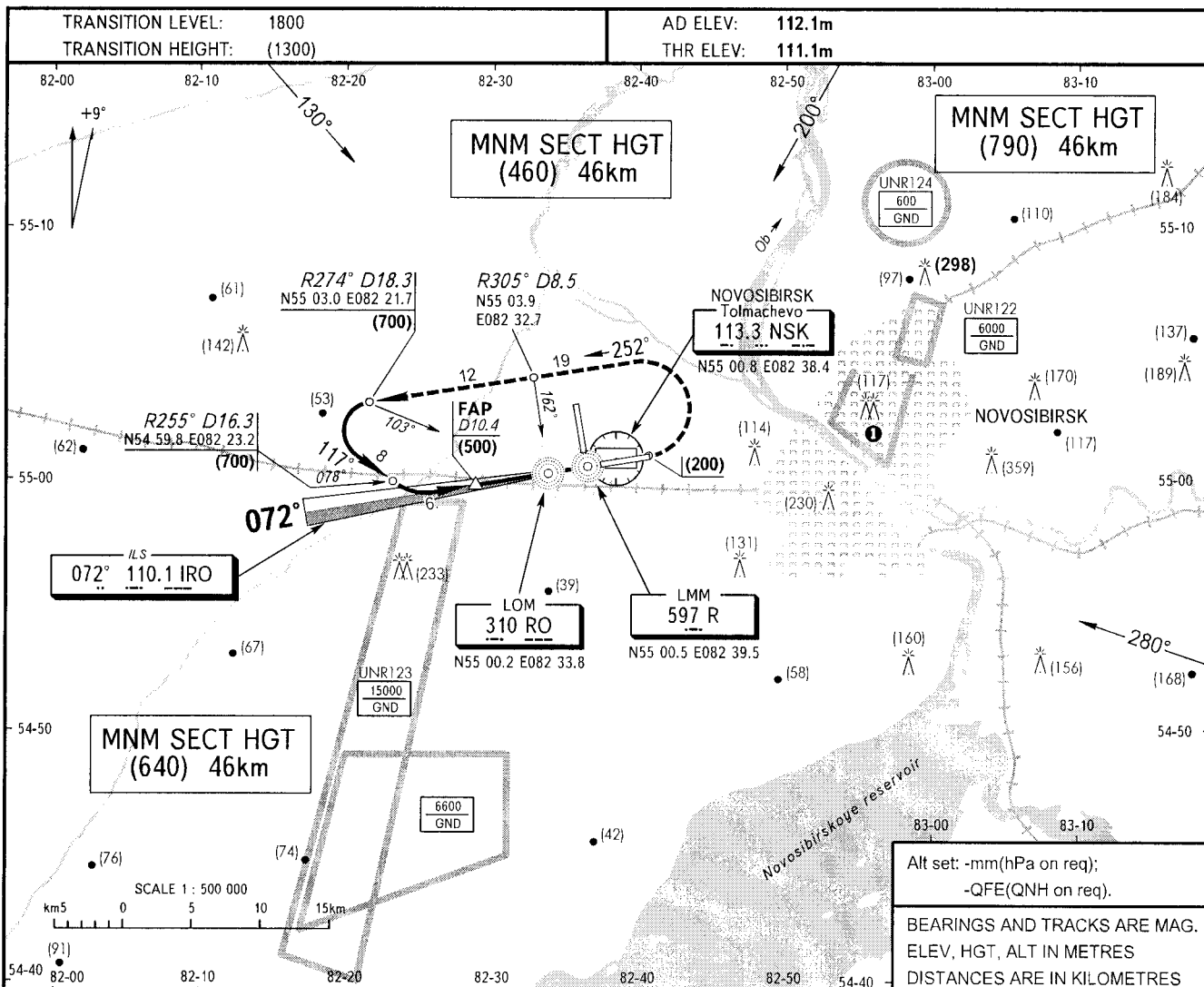
OCA/H		A	B	C	D	WARNING FAF DIST is D10.4km NSK, by SRE is 11.1km.									
Straight-in	CAT I	153(42)	155(44)												
	2 NDB														
Approach	with FAF	213(102)	213(102)			GROUND SPEED km/h 150 180 210 240 270 300 330 360 390 420 450									
	WO FAF	336(225)	336(225)												
						LOM-MAPt 2 NDB 2410m min:s 0.58 0.48 0.41 0.36 0.32 0.29 0.26 0.24 0.22 0.21 0.19									
						RATE OF DESCENT (Grad 5.2%) m/s 2.1 2.6 3.0 3.4 3.9 4.3 4.7 5.2 5.6 5.9 6.5									

CHANGE: New chart

**INSTRUMENT
APPROACH
CHART - ICAO**

APPROACH	FL 1800-5700	127.5
	FL 1800-2100 (by ATC)	127.1
KRUG (Additionally serves as APP FL 1800-2100)		122.0
TOWER		118.5

NOVOSIBIRSK, RUSSIA
TOLMACHEVO
ILS, 2 NDB RWY 07



OCA/H			A	B	C	D	E	<div>① Flights of civil ACFT over central part of the city below (1200) are PROHIBITED.</div> <div>WARNING FAF DIST is D10.4km NSK, by SRE is 11.1km.</div>						
Straight-in Approach	CAT I				158(47)	160(49)	162(51)							
	2 NDB	with FAF			213(102)	213(102)	213(102)							
		WO FAF			336(225)	336(225)	336(225)							
GROUND SPEED			km/h	150	180	210	240	270	300	330	360	390	420	450
LOM-MAPt 2 NDB 2410m			min:sec	0.58	0.48	0.41	0.36	0.32	0.29	0.26	0.24	0.22	0.21	0.19
RATE OF DESCENT (Grad 5.2%)			m/sec	2.1	2.6	3.0	3.4	3.9	4.3	4.7	5.2	5.6	5.9	6.5

① Flights of civil ACFT over central part of the city below (1200) are PROHIBITED.

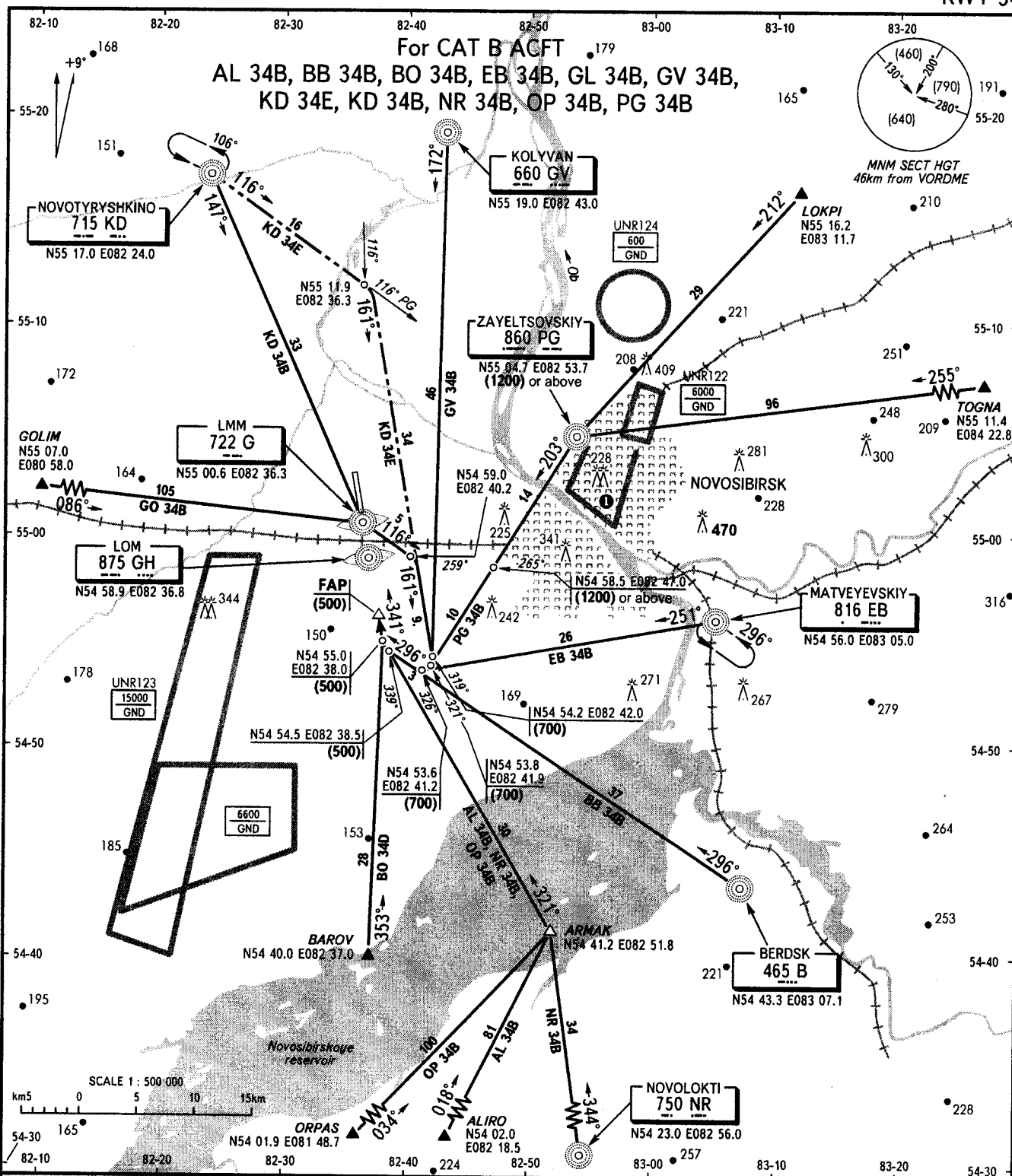
WARNING
FAF DIST is D10.4km NSK, by SRE is 11.1km.

CHANGE: New chart

STANDARD ARRIVAL CHART
INSTRUMENT (STAR) - ICAO

TRANSITION
LEVEL: 1800

NOVOSIBIRSK, RUSSIA
TOLMACHEVO
RWY 34



APPROACH	FL 1800-5700	127.5
KRUG	FL 1800-2100 (by ATC) (Additionally serves as APPROACH FL 1500-2100)	127.1 122.0
TOWER		118.5

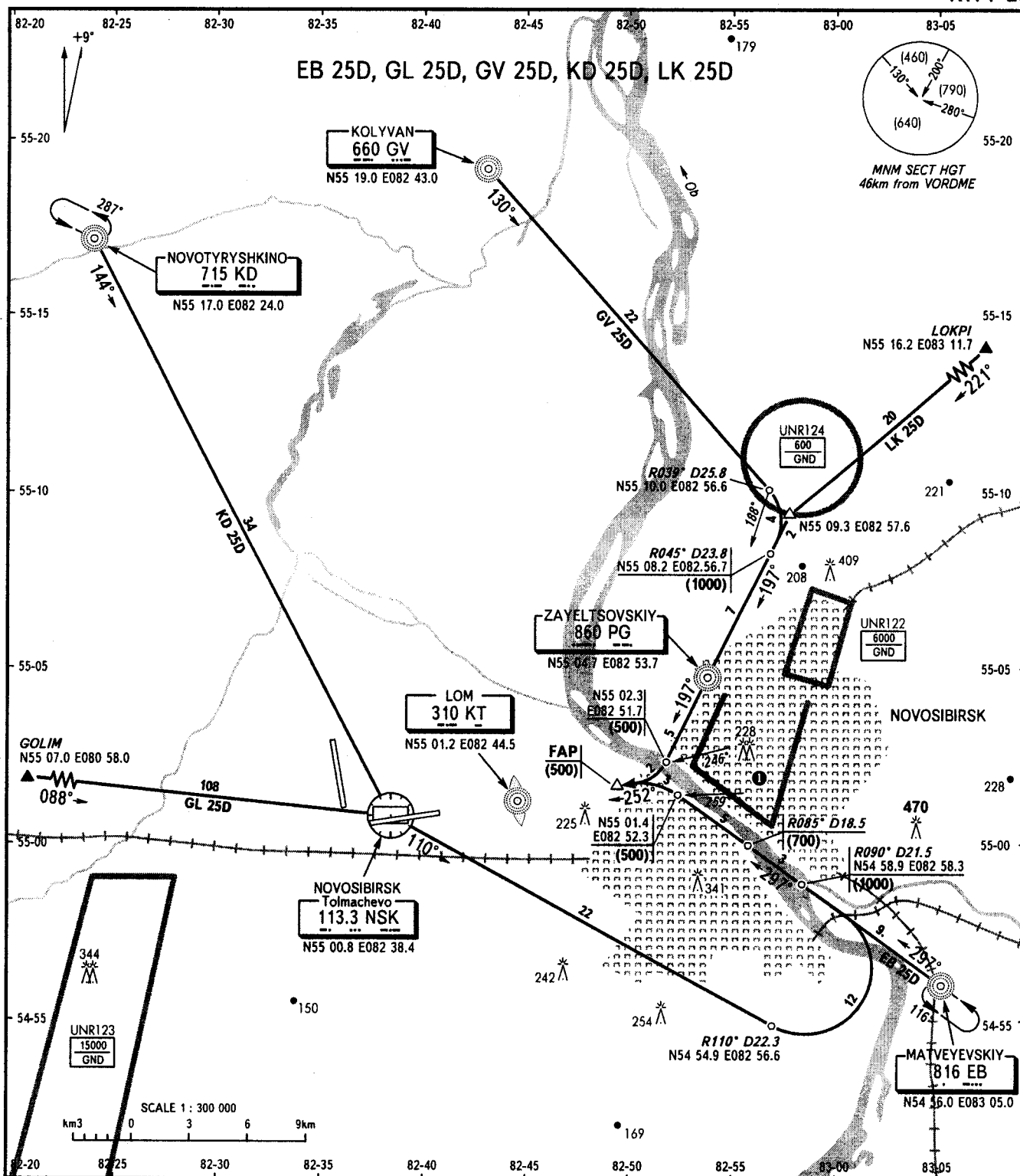
① Flights of civil ACFT over central part of the city below (1200) are PROHIBITED.

BEARINGS AND TRACKS ARE MAGNETIC
ALTITUDES, HEIGHTS AND ELEVATIONS ARE IN METRES
DISTANCES ARE IN KILOMETRES

STANDARD ARRIVAL CHART
INSTRUMENT (STAR) - ICAO

TRANSITION
LEVEL: 1800

NOVOSIBIRSK, RUSSIA
TOLMACHEVO
RWY 25



APPROACH FL 1500-5700 127.5
FL 1500-2100 (by ATC) 127.1
KRUG (Additionally serves as
APPROACH FL 1500-2100) 122.0
TOWER 118.5

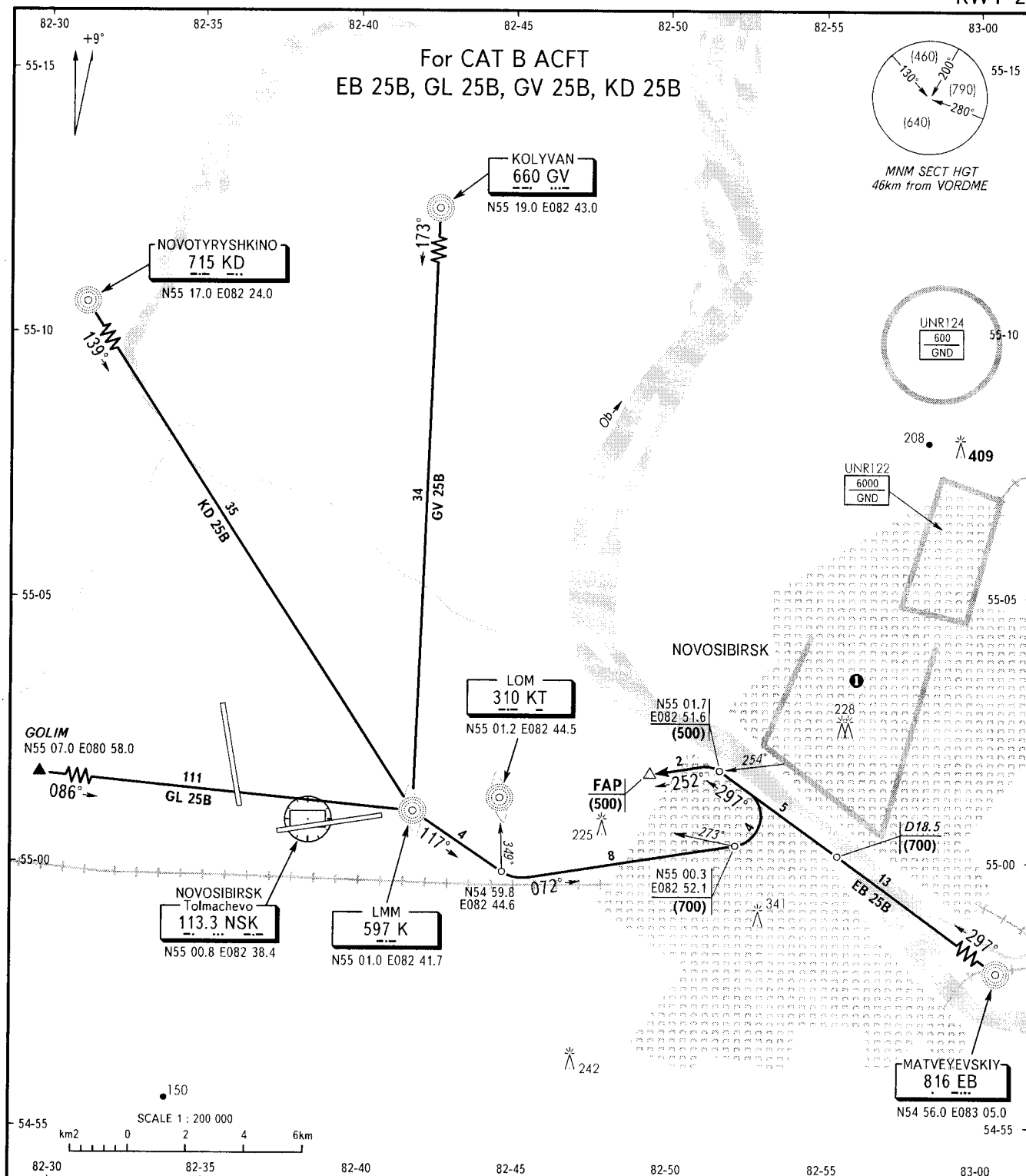
① Flights of civil ACFT over central part of
the city below (1200) are PROHIBITED.

BEARINGS AND TRACKS ARE MAGNETIC
ALTITUDES, HEIGHTS AND ELEVATIONS ARE IN METRES
DISTANCES ARE IN KILOMETRES

STANDARD ARRIVAL CHART
INSTRUMENT (STAR) - ICAO

TRANSITION
LEVEL: 1800

NOVOSIBIRSK, RUSSIA
TOLMACHEVO
RWY 25



APPROACH	FL 1800-5700	127.5
KRUG	FL 1800-2100 (by ATC) (Additionally serves as APPROACH FL 1800-2100)	127.1
TOWER		122.0
		118.5

① Flights of civil ACFT over central part of the city below (1200) are PROHIBITED.

BEARINGS AND TRACKS ARE MAGNETIC
ALTITUDES, HEIGHTS AND ELEVATIONS ARE IN METRES
DISTANCES ARE IN KILOMETRES

NOVOSIBIRSK, RUSSIA
TOLMACHEVO
RWY 34

RWY 34



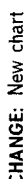
APPROACH	FL 1800-5700	127.5
	FL 1800-2100 (by ATC)	127.1
KRUG	(Additionally serves as	
	APPROACH FL 1500-2100)	122.0
TOWER		118.5

BEARINGS AND TRACKS ARE MAGNETIC
ALTITUDES, HEIGHTS AND ELEVATIONS ARE IN METRES
DISTANCES ARE IN KILOMETRES

CHANGE: New chart

NOVOSIBIRSK, RUSSIA
TOLMACHEVO
RWY 16

TRANSITION
LEVEL: 1800



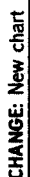
APPROACH	FL 1500-5700	127.5
	FL 1500-2100 (by ATC)	127.1
KRUG	(Additionally serves as	
	APPROACH FL 1500-2100)	122.0
TOWER		118.5

① Flights of civil ACFT over central part of the city below (1200) are PROHIBITED.

BEARINGS AND TRACKS ARE MAGNETIC
ALTITUDES, HEIGHTS AND ELEVATIONS ARE IN METRES
DISTANCES ARE IN KILOMETRES

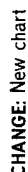
NOVOSIBIRSK, RUSSIA
TOLMACHEVO
RWY 07

For CAT B ACFT
AM 07B, BB 07B, BO 07B, EB 07B, GL 07B,
GV 07B, KD 07B, LK 07B, NR 07B, PG 07B



BEARINGS AND TRACKS ARE MAGNETIC
ALTITUDES, HEIGHTS AND ELEVATIONS ARE IN METRES
DISTANCES ARE IN KILOMETRES

NOVOSIBIRSK, RUSSIA
TOLMACHEVO
RWY 07



APPROACH	FL 1800-5700	127.5
	FL 1800-2100 (by ATC)	127.1
KRUG	(Additionally serves as	
	APPROACH FL 1500-2100)	122.0
TOWER		118.5

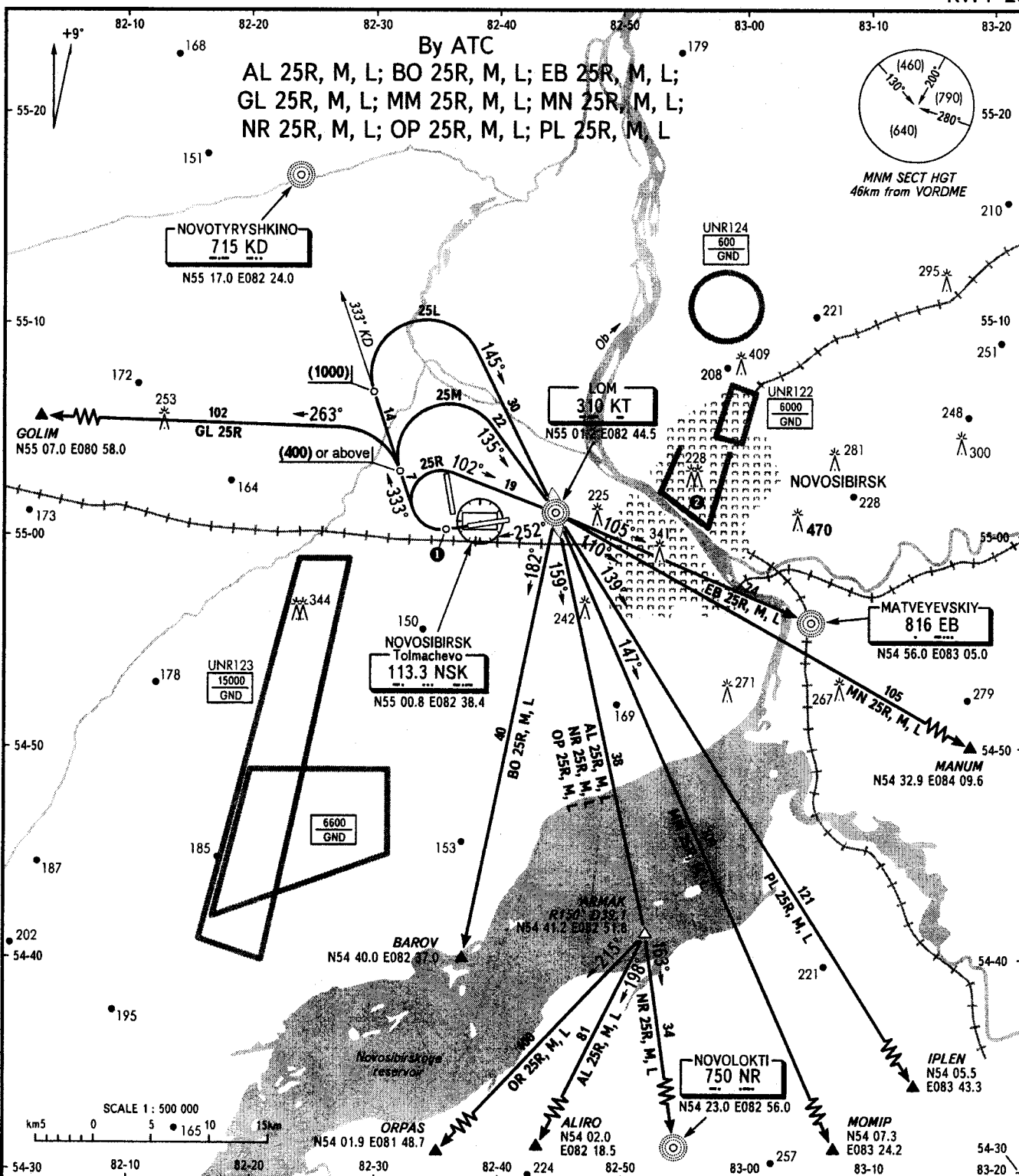
① Flights of civil ACFT over central part of the city below (1200) are PROHIBITED.

BEARINGS AND TRACKS ARE MAGNETIC
ALTITUDES, HEIGHTS AND ELEVATIONS ARE IN METRES
DISTANCES ARE IN KILOMETRES

STANDARD DEPARTURE CHART
INSTRUMENT (SID) - ICAO

TRANSITION
HEIGHT : (1300)

NOVOSIBIRSK, RUSSIA
TOLMACHEVO
RWY 25



START	118.5
KRUG	(Additionally serves as)
APPROACH FL 1800-2100)	122.0
APPROACH FL 1800-5700	127.5
FL 1800-2100 (by ATC)	127.1

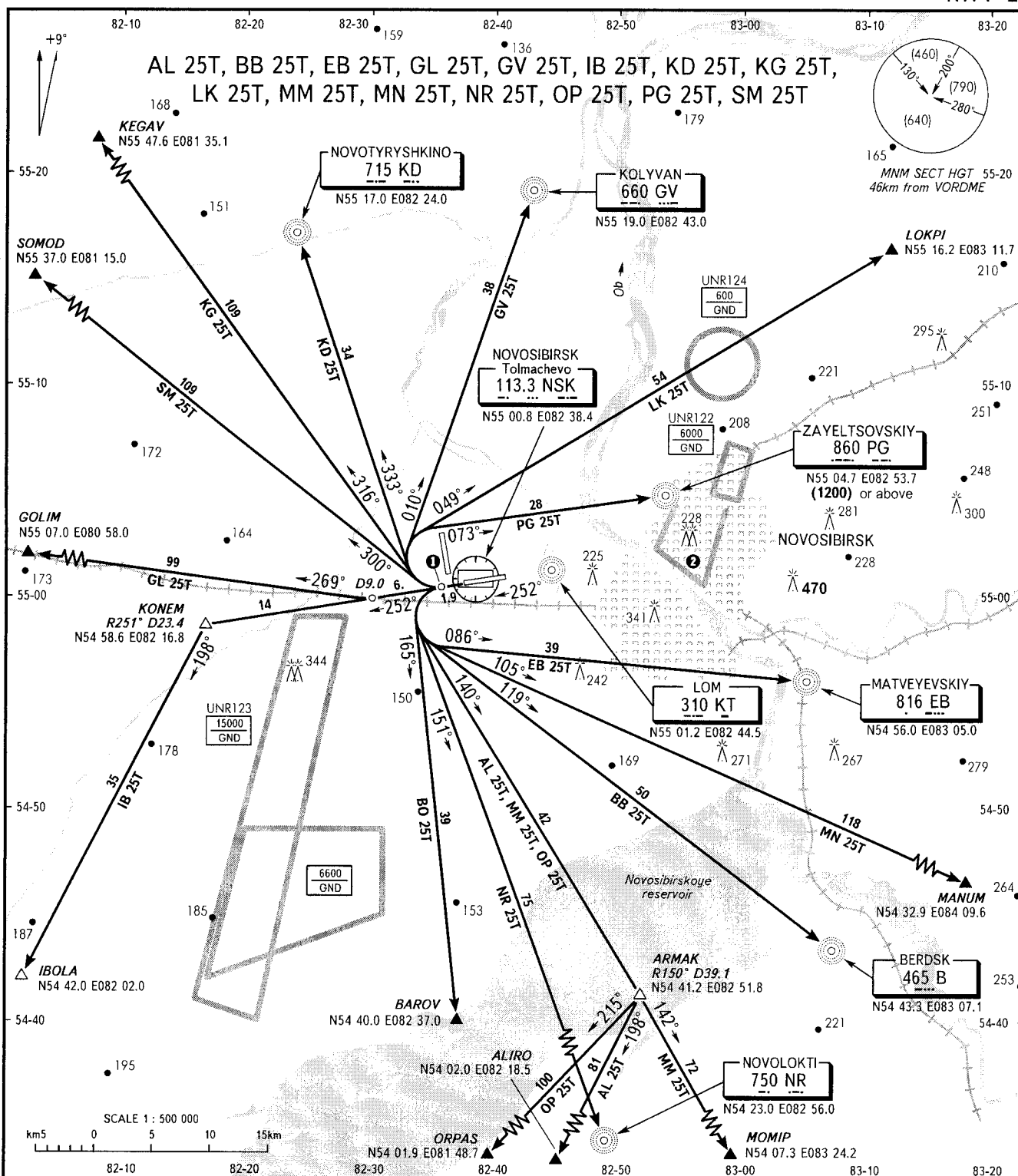
- Initial turn shall be executed at D3.0 NSK. When necessary, flaps and gear retraction shall be made after or in the process of turn.
- Flights of civil ACFT over central part of the city below (1200) are PROHIBITED.

BEARINGS AND TRACKS ARE MAGNETIC
ALTITUDES, HEIGHTS AND ELEVATIONS ARE IN METRES
DISTANCES ARE IN KILOMETRES

STANDARD DEPARTURE CHART
INSTRUMENT (SID) - ICAO

TRANSITION
HEIGHT: (1300)

NOVOSIBIRSK, RUSSIA
TOLMACHEVO
RWY 25



START	118.5
KRUG	(Additionally serves as
APPROACH	FL 1800-2100) 122.0
FL 1800-5700	127.5
FL 1800-2100 (by ATC)	127.1

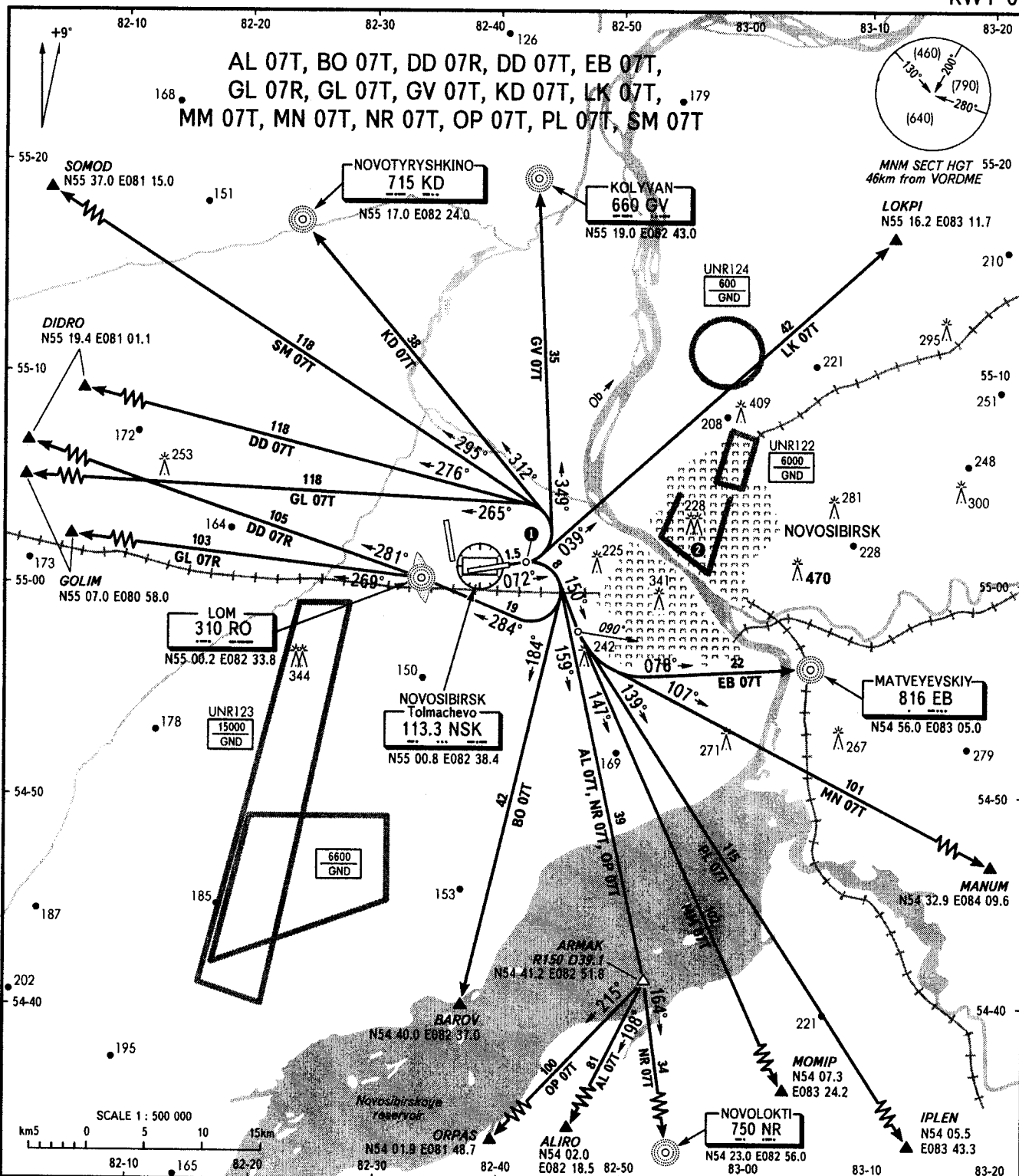
- Initial turn shall be executed at D3.0 NSK. When necessary, flaps and gear retraction shall be made after or in the process of turn.
- Flights of civil ACFT over central part of the city below (1200) are PROHIBITED.

BEARINGS AND TRACKS ARE MAGNETIC
ALTITUDES, HEIGHTS AND ELEVATIONS ARE IN METRES
DISTANCES ARE IN KILOMETRES

STANDARD DEPARTURE CHART
INSTRUMENT (SID) - ICAO

TRANSITION
HEIGHT : (1300)

NOVOSIBIRSK, RUSSIA
TOLMACHEVO
RWY 07



START		118.5
KRUG	(Additionally serves as	
	APPROACH FL 1800-2100)	122.0
APPROACH	FL 1800-5700	127.5
	FL 1800-2100 (by ATC)	127.1

- Initial turn shall be executed at D4.0 NSK. When necessary, flaps and gear retraction shall be made after or in the process of turn.
- Flights of civil ACFT over central part of the city below (1200) are PROHIBITED.

WARNING

Take-off shall be carried out using noise abatement procedure for the area according to the Aeroplane Flight Manual.

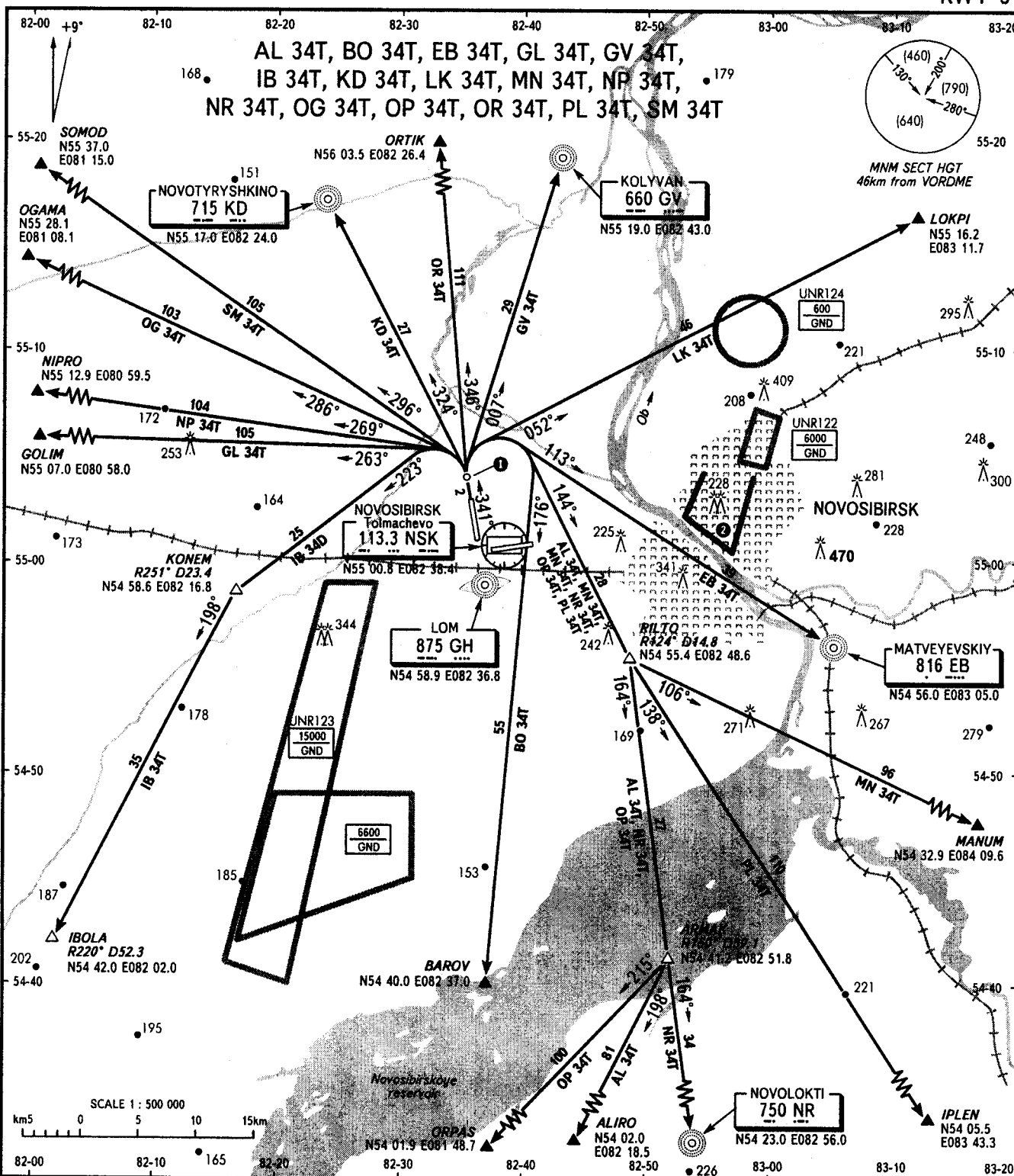
BEARINGS AND TRACKS ARE MAGNETIC
ALTITUDES, HEIGHTS AND ELEVATIONS ARE IN METRES
DISTANCES ARE IN KILOMETRES

CHANGE: New chart

STANDARD DEPARTURE CHART
INSTRUMENT (SID) - ICAO

TRANSITION
HEIGHT : (1300)

NOVOSIBIRSK, RUSSIA
TOLMACHEVO
RWY 34



START	118.5
KRUG	(Additionally serves as
APPROACH	FL 1800-2100)
FL 1800-2100	122.0
FL 1800-2100 (by ATC)	127.5
	127.1

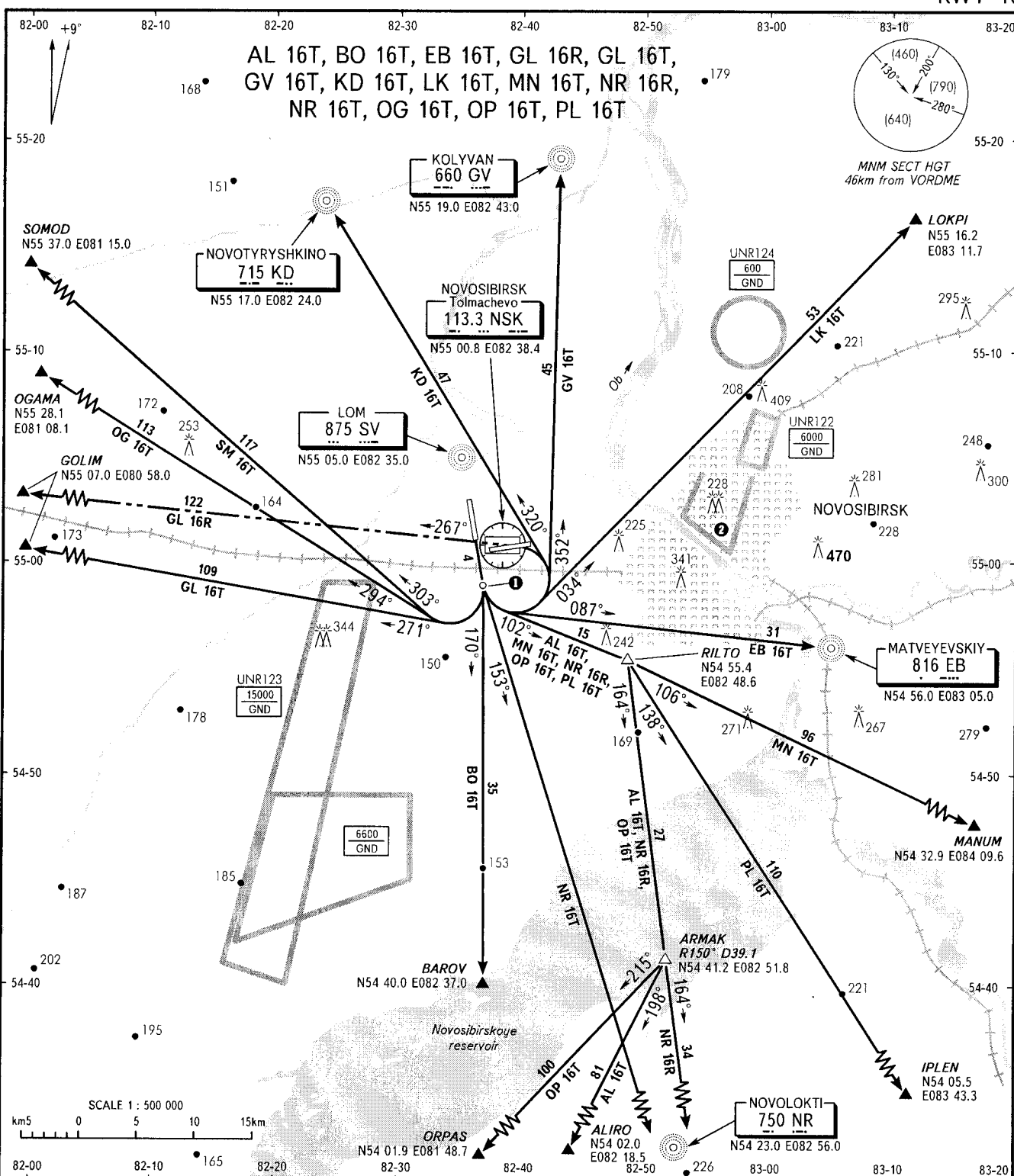
- Initial turn shall be executed at D6.8 NSK. When necessary, flaps and gear retraction shall be made after or in the process of turn.
- Flights of civil ACFT over central part of the city below (1200) are PROHIBITED.

BEARINGS AND TRACKS ARE MAGNETIC
ALTITUDES, HEIGHTS AND ELEVATIONS ARE IN METRES
DISTANCES ARE IN KILOMETRES

STANDARD DEPARTURE CHART
INSTRUMENT (SID) - ICAO

TRANSITION
HEIGHT : (1300)

NOVOSIBIRSK, RUSSIA
TOLMACHEVO
RWY 16



START	118.5
KRUG	(Additionally serves as
APPROACH	FL 1800-2100) 122.0
FL 1800-5700	127.5
FL 1800-2100 (by ATC)	127.1

- ① Initial turn shall be executed at D3.8 NSK. When necessary, flaps and gear retraction shall be made after or in the process of turn.
- ② Flights of civil ACFT over central part of the city below (1200) are PROHIBITED.

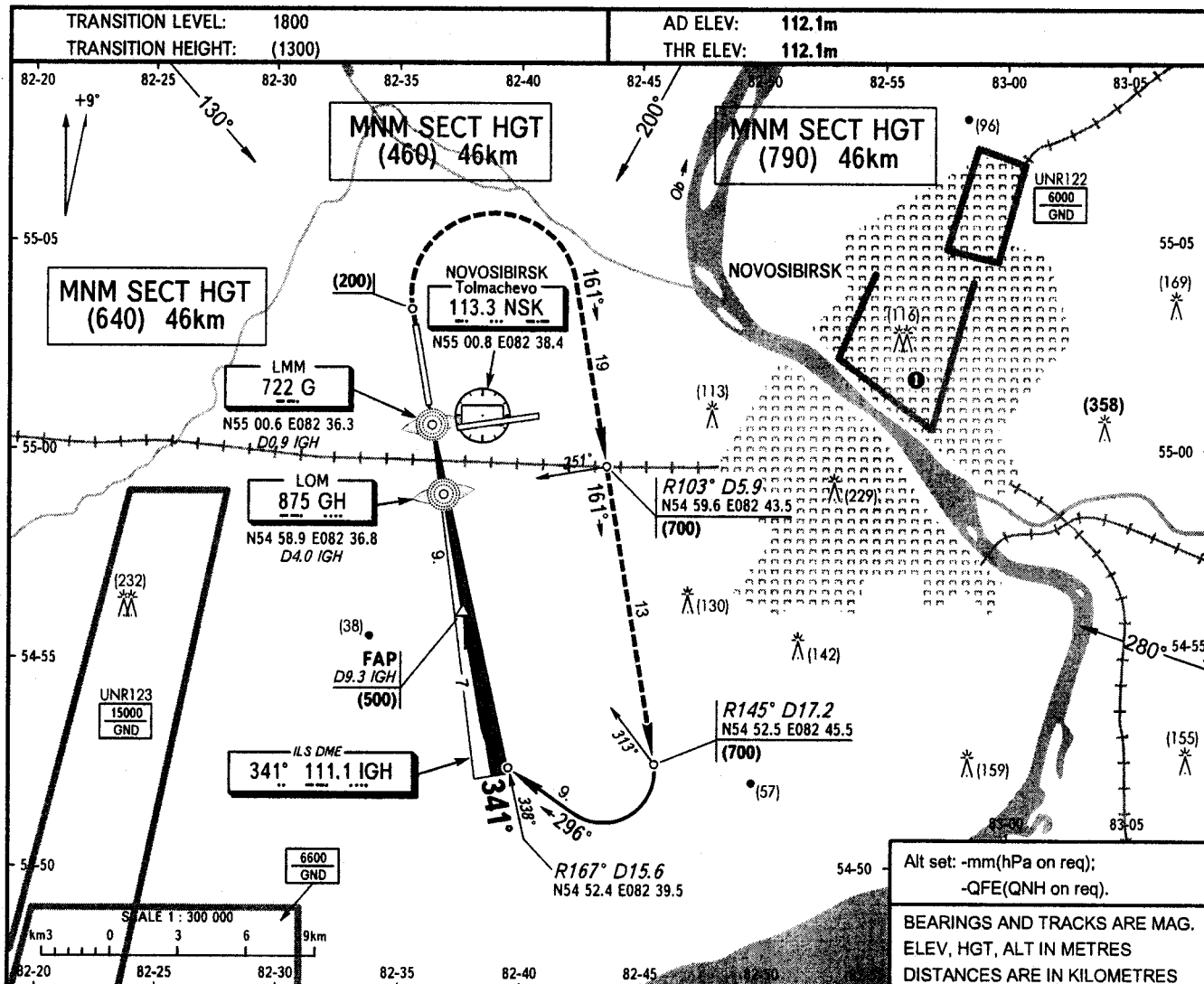
BEARINGS AND TRACKS ARE MAGNETIC
ALTITUDES, HEIGHTS AND ELEVATIONS ARE IN METRES
DISTANCES ARE IN KILOMETRES

CHANGE: New chart

**INSTRUMENT
APPROACH
CHART - ICAO**

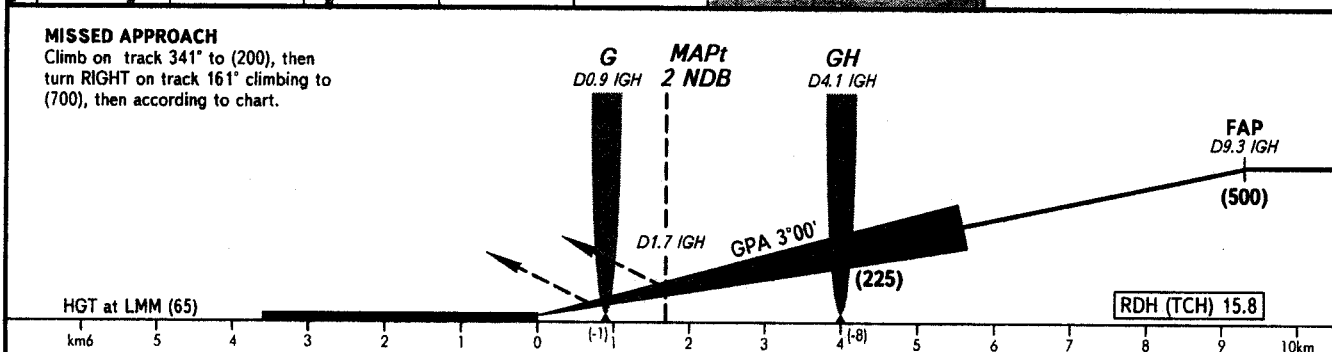
APPROACH FL 1800-5700 127.5
FL 1800-2100 (by ATC) 127.1
KRUG (Additionally serves as APP FL 1800-2100) 122.0
TOWER 118.5

NOVOSIBIRSK, RUSSIA
TOLMACHEVO
ILS DME, 2 NDB RWY 34



MISSED APPROACH

Climb on track 341° to (200), then turn RIGHT on track 161° climbing to (700), then according to chart.

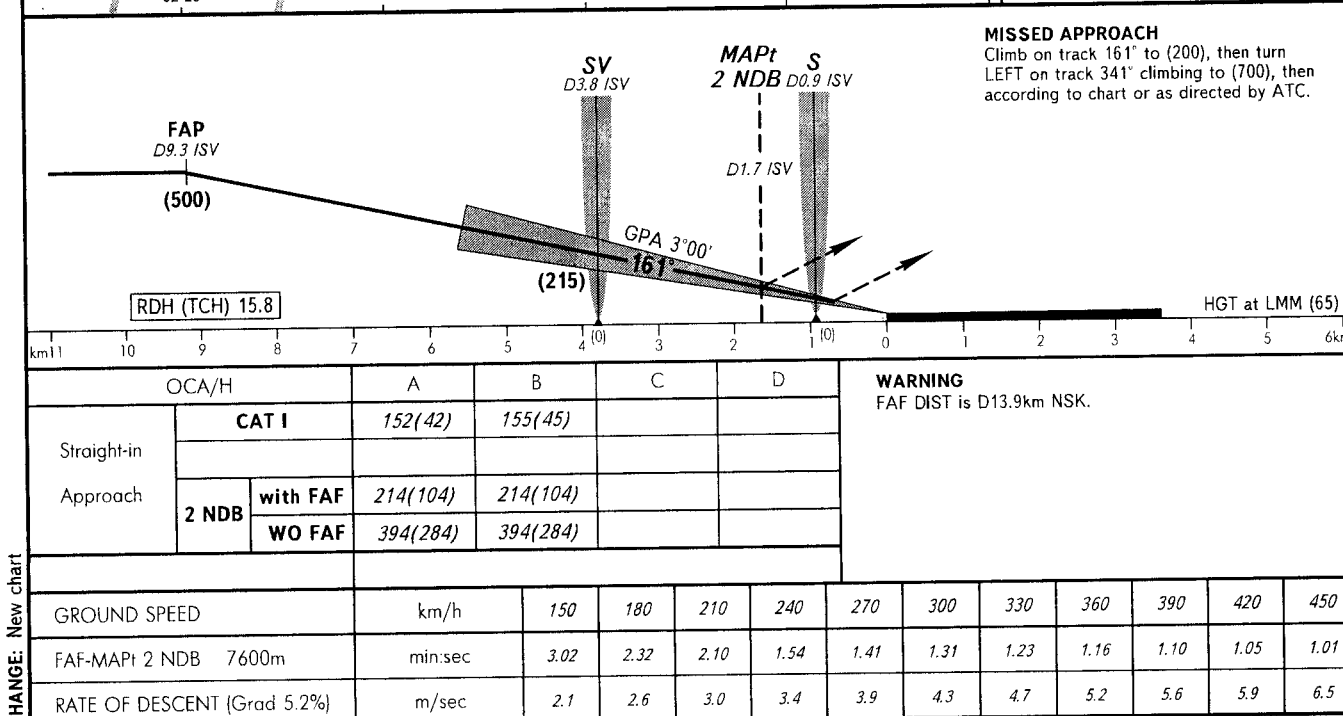
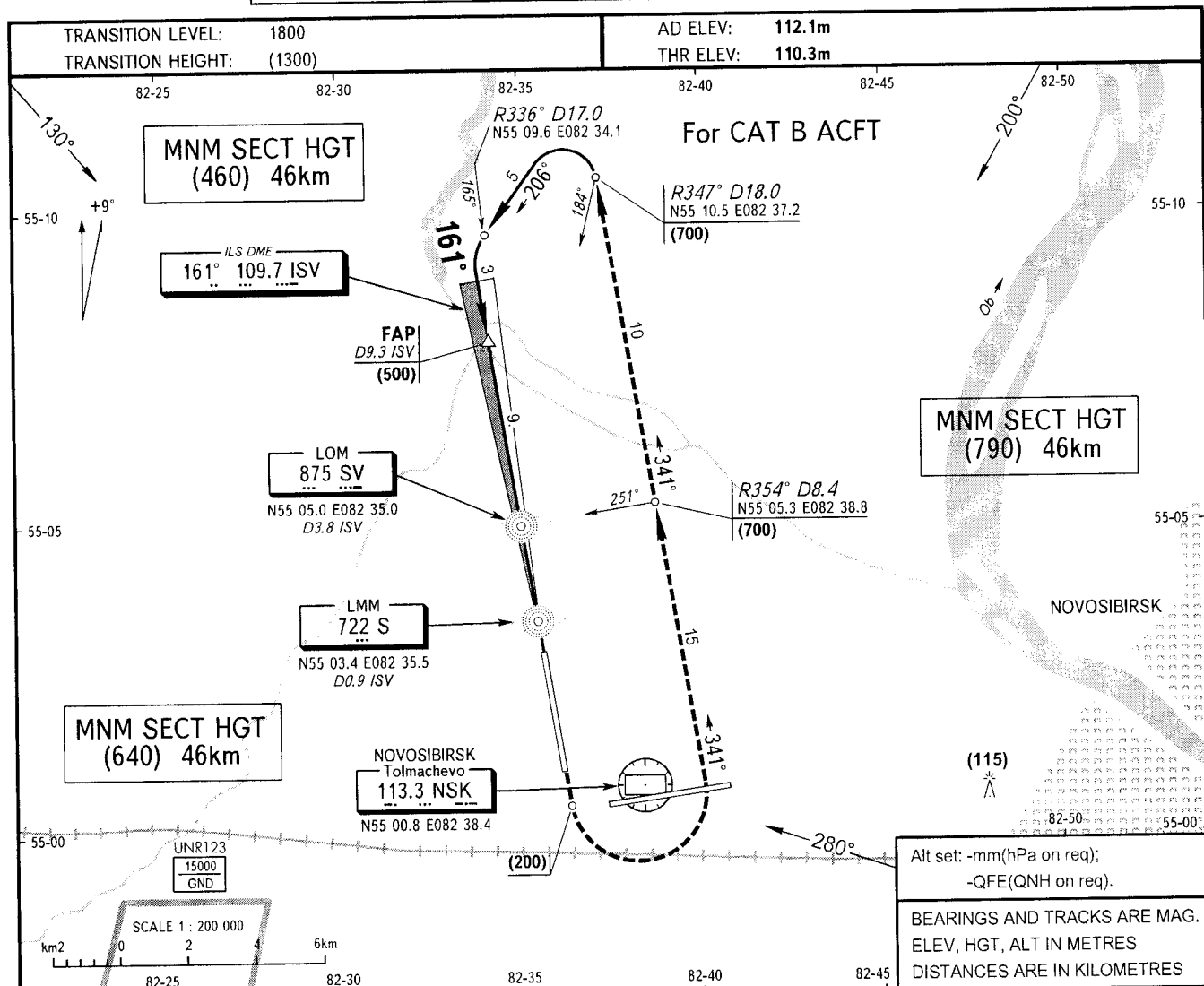


OCA/H		A	B	C	D	E	<p>① Flights of civil ACFT over central part of the city below (1200) are PROHIBITED.</p> <p>WARNING FAF DIST is D8.8km NSK.</p>							
Straight-in Approach	CAT I			160(48)	163(51)	166(54)								
	2 NDB													
	with FAF			216(104)	216(104)	216(104)								
	WO FAF			396(284)	396(284)	396(284)								
GROUND SPEED		km/h	150	180	210	240	270	300	330	360	390	420	450	CHANGE: New chart
FAF-MAPt 2 NDB 7600m		min:sec	3.02	2.32	2.10	1.54	1.41	1.31	1.23	1.16	1.10	1.05	1.01	
RATE OF DESCENT (Grad 5.2%)		m/sec	2.1	2.6	3.0	3.4	3.8	4.3	4.7	5.1	5.5	6.0	6.4	

INSTRUMENT
APPROACH
CHART - ICAO

APPROACH FL 1800-5700 127.5
FL 1800-2100 (by ATC) 127.1
KRUG (Additionally serves as APP FL 1800-2100) 122.0
TOWER 118.5

NOVOSIBIRSK, RUSSIA
TOLMACHEVO
ILS DME, 2 NDB RWY 16

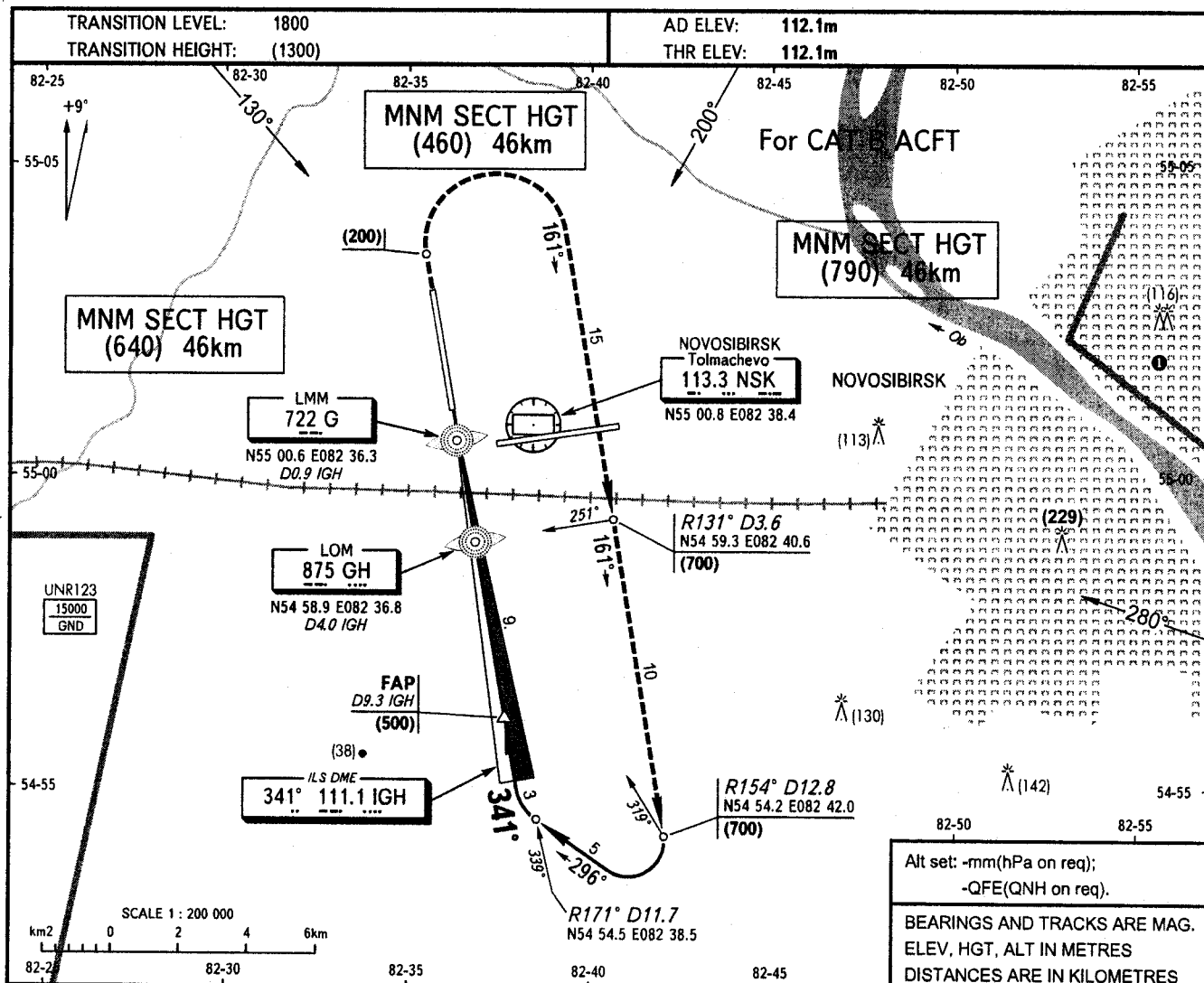


CHANGE: New chart

**INSTRUMENT
APPROACH
CHART - ICAO**

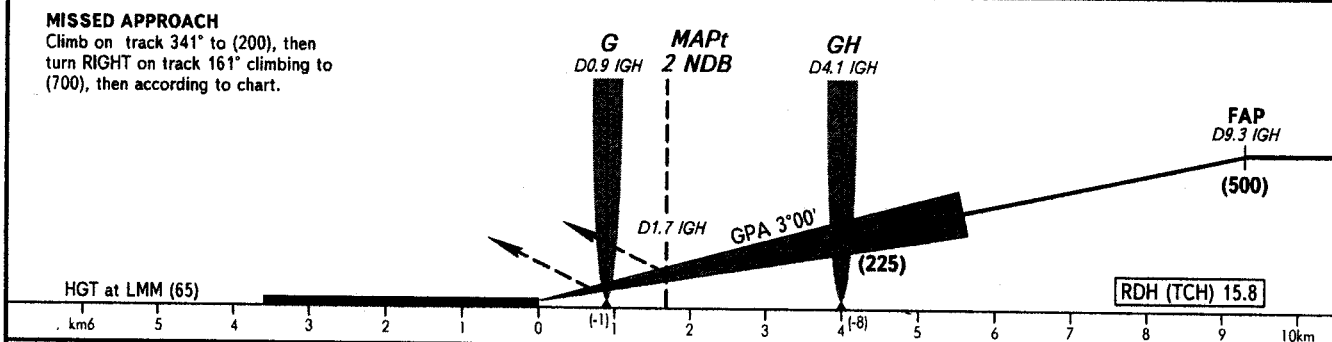
APPROACH	FL 1800-5700	127.5
	FL 1800-2100 (by ATC)	127.1
KRUG (Additionally serves as APP FL 1800-2100)		122.0
TOWER		118.5

NOVOSIBIRSK, RUSSIA
TOLMACHEVO
ILS DME, 2 NDB RWY 34



MISSED APPROACH

Climb on track 341° to (200), then turn RIGHT on track 161° climbing to (700), then according to chart.

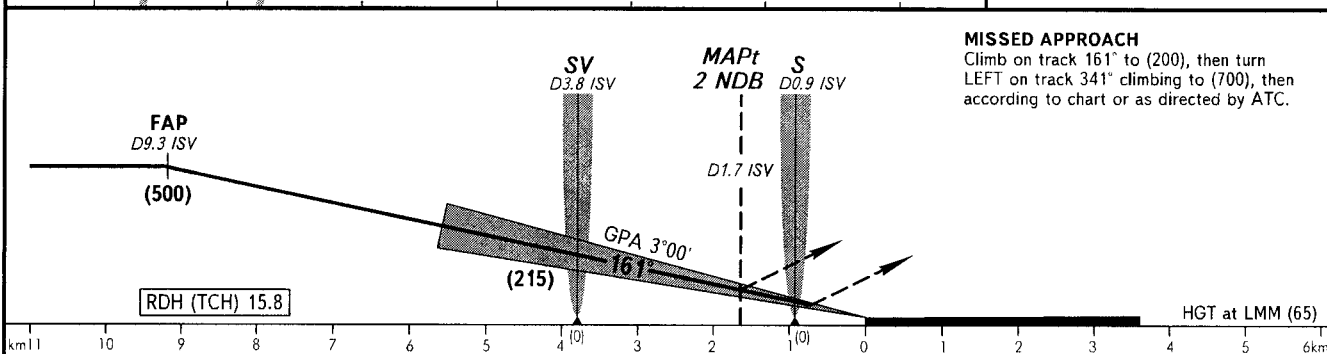
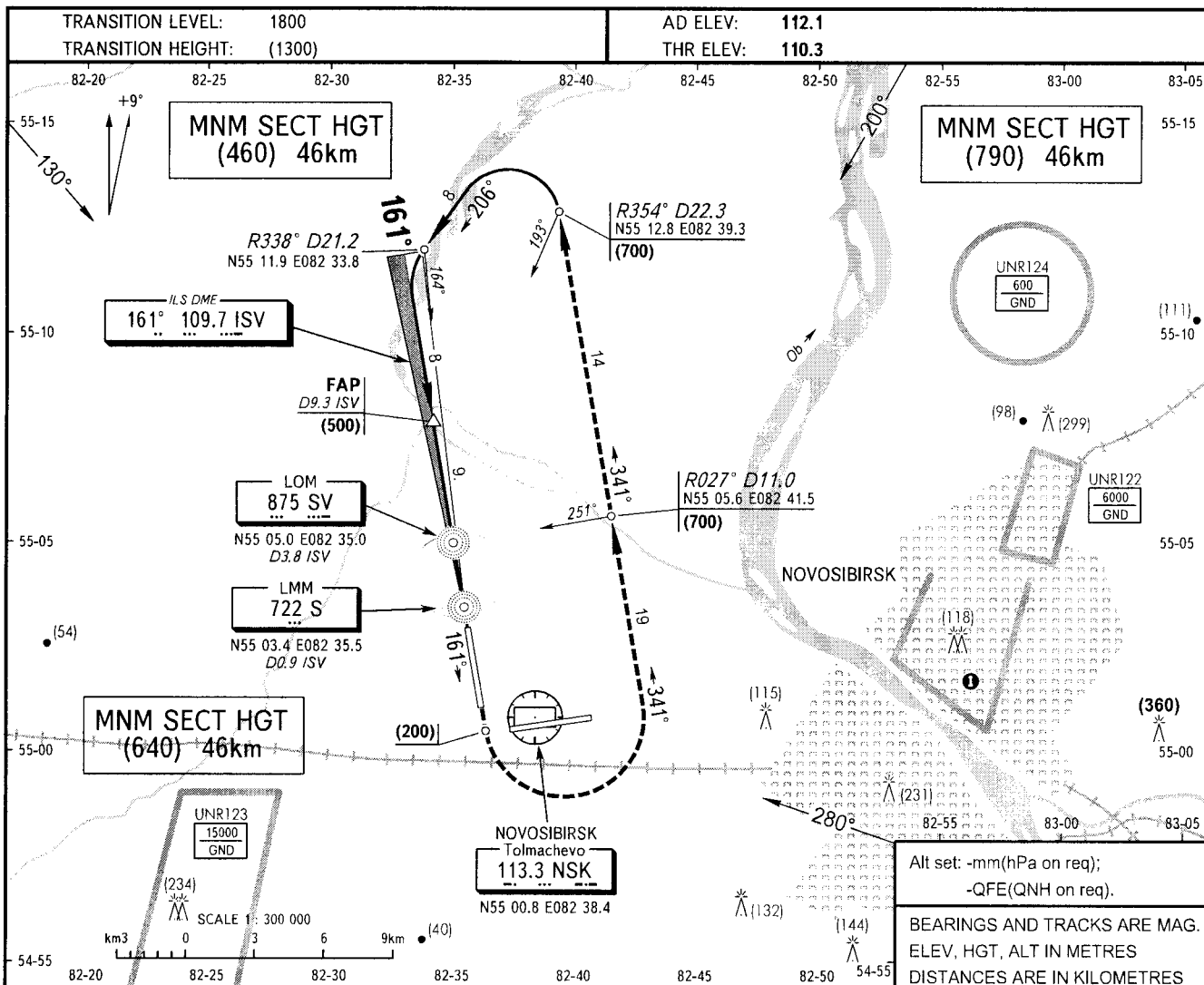


OCA/H			A	B	C	D	<div>✈ Flights of civil ACFT over central part of the city below (1200) are PROHIBITED.</div> <div>WARNING FAF DIST is D8.8km NSK.</div>							
Straight-in Approach	CAT I		154(42)	157(45)										
	2 NDB	with FAF	216(104)	216(104)										
		WO FAF	396(284)	396(284)										
GROUND SPEED			km/h	150	180	210	240	270	300	330	360	390	420	450
FAF-MAPt 2 NDB 7600m			min:sec	3.02	2.32	2.10	1.54	1.41	1.31	1.23	1.16	1.10	1.05	1.01
RATE OF DESCENT (Grad 5.2%)			m/sec	2.1	2.6	3.0	3.4	3.8	4.3	4.7	5.1	5.5	6.0	6.4

INSTRUMENT
APPROACH
CHART - ICAO

APPROACH FL 1800-5700 127.5
FL 1800-2100 (by ATC) 127.1
KRUG (Additionally serves as APP FL 1800-2100) 122.0
TOWER 118.5

NOVOSIBIRSK, RUSSIA
TOLMACHEVO
ILS DME, 2 NDB RWY 16

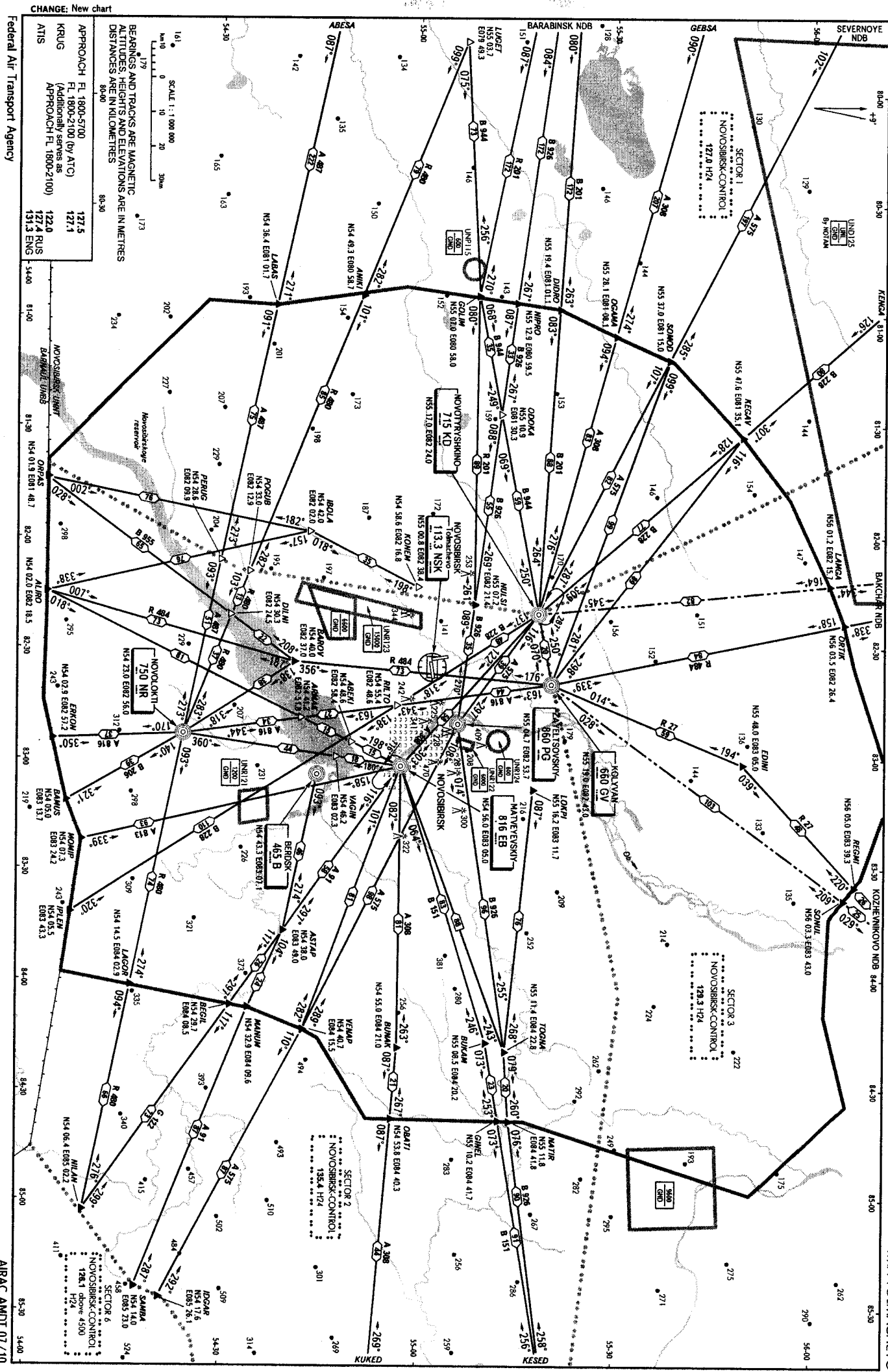


OCA/H			A	B	C	D	E	<div>① Flights of civil ACFT over central part of the city below (1200) are PROHIBITED.</div> <div>WARNING FAF DIST is D13.9km NSK.</div>						
Straight-in Approach	CAT I				158(48)	161(51)	164(54)							
	2 NDB	with FAF			214(104)	214(104)	214(104)							
		WO FAF			394(284)	394(284)	394(284)							
GROUND SPEED			km/h	150	180	210	240	270	300	330	360	390	420	450
FAF-MAPt 2 NDB 7600m			min:sec	3.02	2.32	2.10	1.54	1.41	1.31	1.23	1.16	1.10	1.05	1.01
RATE OF DESCENT (Grad 5.2%)			m/sec	2.1	2.6	3.0	3.4	3.9	4.3	4.7	5.2	5.6	5.9	6.5

CHANGE: New chart

NOVOSIBIRSK, RUSSIA

TMA TOLMACHEVO



AIP
RUSSIA AND CIS

AD 2.1 UNNT-31
01 JUL 10

AERODROME
CHART - ICAO

ARP
N55°02.0'
E082°35.9'

ELEV
112.1m

START 118.5
TAXIING 121.7

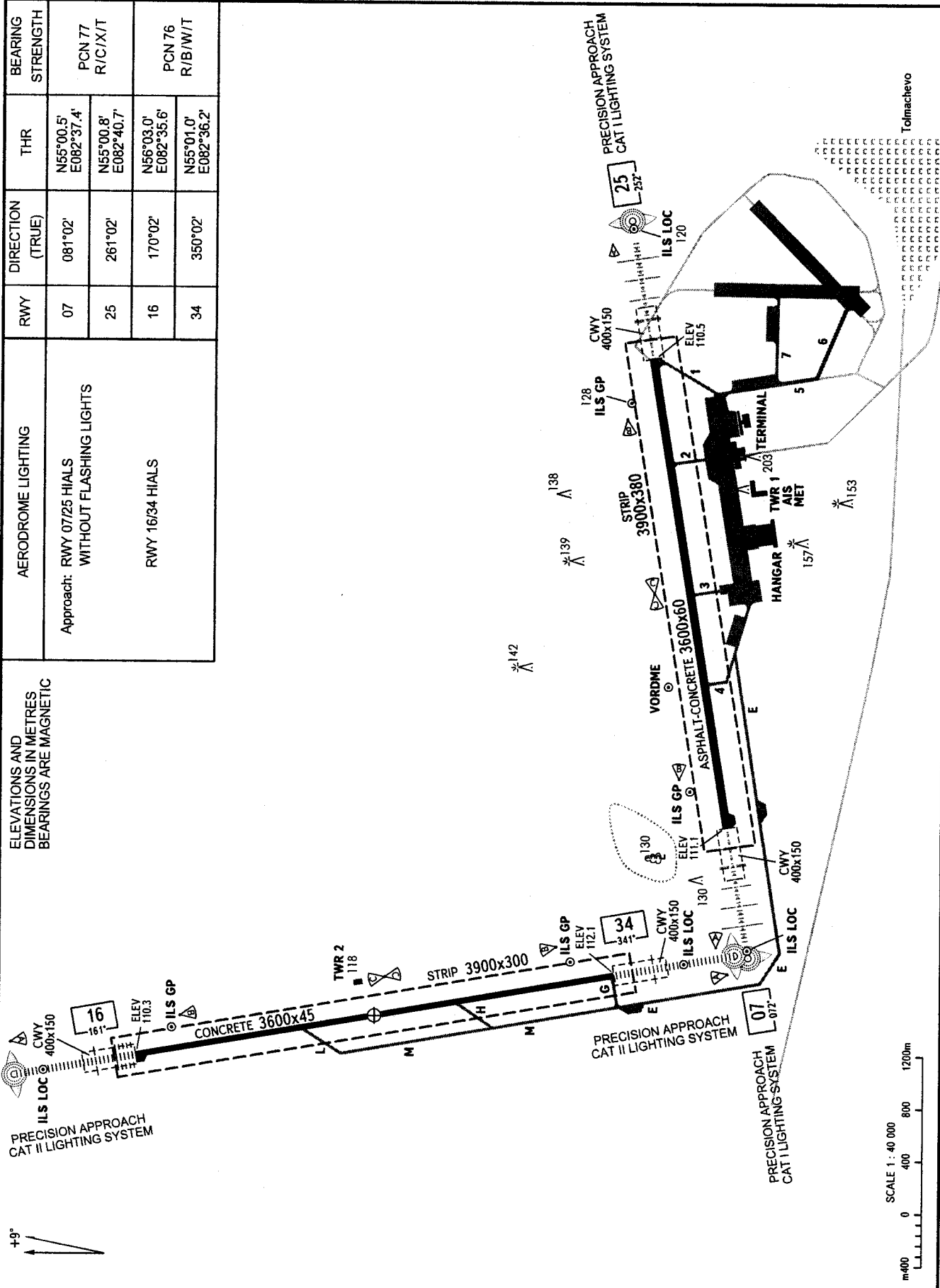
NOVOSIBIRSK, RUSSIA

TOLMACHEVO

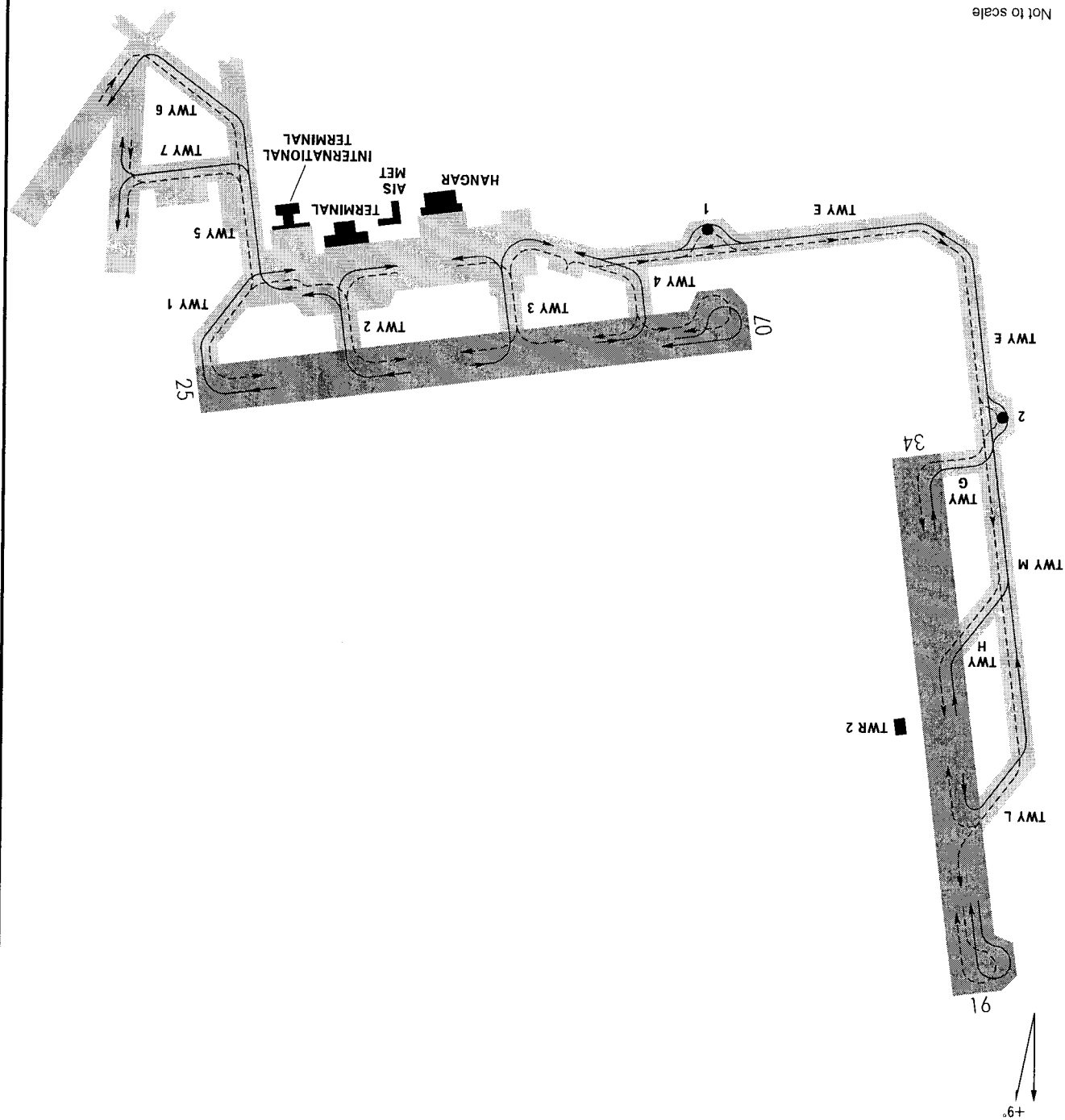
AERODROME LIGHTING	RWY	DIRECTION (TRUE)	THR	BEARING STRENGTH
Approach: RWY 07/25 HIALS WITHOUT FLASHING LIGHTS	07	081°02'	N55°00.5' E082°37.4'	PCN 77 R/C/X/T
	25	261°02'	N55°00.8' E082°40.7'	
RWY 16/34 HIALS	16	170°02'	N56°03.0' E082°35.6'	PCN 76 R/B/W/T
	34	350°02'	N55°01.0' E082°36.2'	

ELEVATIONS AND
DIMENSIONS IN METRES
BEARINGS ARE MAGNETIC

CHANGE: New chart



118.5	START
121.7	TAXING

AERODROME GROUND
MOVEMENT CHART - ICAO

Not to scale

6+

TAXWAYS:	
Width:	22.5m all TWY
Surface:	E, M, G, H, L
Strength:	1
	2
	3
	4
	E, M
	G
	H
	L

T

WARNING:

1. Floodlight masts (22m high are installed on the northern and southern sides of the apron from TWY 1 to TWY 4.
2. Taxiing of B747, An-124 A/CFT into stand 56 shall be carried out via TWY 4 when stands 33, 41 are vacant, and taxiing into RWY shall be carried out via TWY 3.

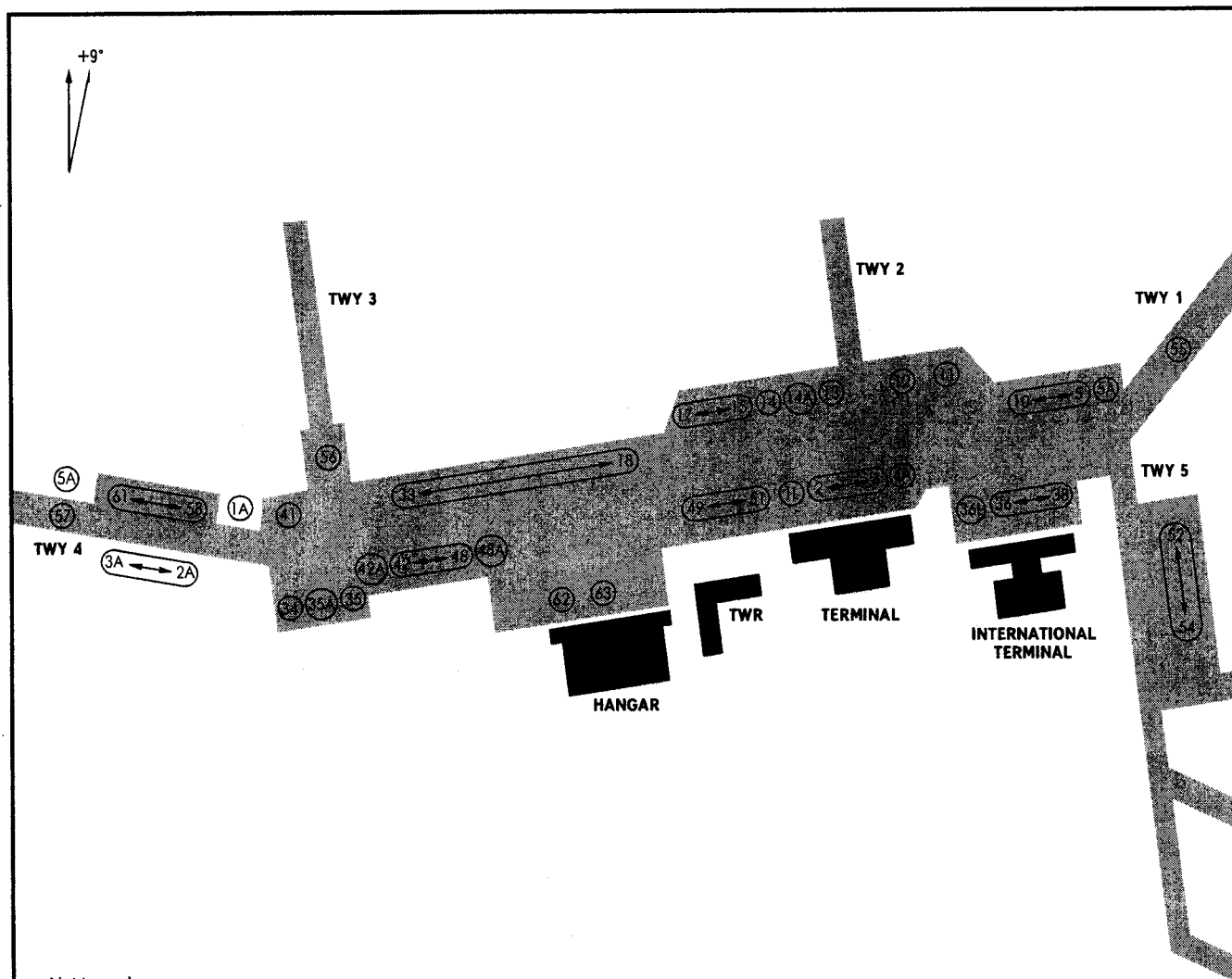
Towing shall be carried out when stands 33, 41 are occupied.

AIRCRAFT PARKING
CHART - ICAO

START 118.5
TAXIING 121.7

NOVOSIBIRSK, RUSSIA

TOLMACHEVO



Not to scale

WARNING:

1. Stands 34 and 35 are AVBL as reserve stand for one ACFT of An-124, B747 type.
2. Parking of class below ACFT is allowed on all stands.
3. Aerobridges are put into operation on ACFT stands 2, 3, 37. Taxiing into stands shall be carried out under own engines power according to marking.
4. Stands 2 and 37 are AVBL for Tu-154, A-310, A-319, A-320, A-321, B727, B737 and smaller ACFT.

STAND NR	LATITUDE	LONGITUDE
1-4	N55 00.5	E082 40.1
5	N55 00.6	E082 40.4
6-10	N55 00.6	E082 40.3
11-13	N55 00.6	E082 39.1
14, 15	N55 00.6	E082 39.9
16-18	N55 00.6	E082 39.8
19, 20	N55 00.6	E082 39.7
21-23	N55 00.6	E082 39.6
24, 25	N55 00.6	E082 39.5
26-28	N55 00.6	E082 39.4
4A-36	N55 00.6	E082 40.2
37, 38	N55 00.6	E082 40.3
56	N55 00.6	E082 39.2

ACFT types:

A-300
A-310
A-310, A-319, A-320
A-330
A-340
B727, B757
B737
B747
B767
B777
DC-10
MD-11
An-124, An-22
An-8, An-12
An-24, An-26, An-30, Yak-40,
Falcon, ATR-42, Gulfstream 3SP,
Gulfstream 4SP
An-72
Il-96
Il-86

Il-76
Il-62
Tu-204
Tu-154

Tu-134

Yak-42

STANDS:

1L, 3, 5, 6, 8-10, 13, 14, 17, 24-26, 34-38, 62
1L, 2, 3, 5, 6, 8-10, 13, 14, 24-26, 34-38, 36L, 41, 62
1L, 2-4, 4A, 6-17, 19-29, 34-38, 51-54, 58-63
14A, 17, 56
1L, 14A, 56
1L, 2-4, 5, 6-10, 13-17, 19-29, 34-38, 36L, 51, 62, 63
1L, 2-5, 6-29, 34-38, 36L, 49-51, 62, 63
14A, 35A, 56, 57
1L, 3, 5, 6, 8-10, 13, 14, 17, 24-26, 34-38, 41, 55, 56
5A, 14A, 35A, 56
1L, 5, 8-10, 14A, 34-38, 55, 56
1L, 5, 14A, 35A, 56, 57
14A, 35A, 56, 57
11, 12, 42A, 45A, 46A, 58-62, 1A-5A

11, 12, 29, 31-33, 42-48, 1A-5A
11, 12, 58-62
1L, 5A, 14A, 35A, 56, 57
1L, 3, 5, 6, 8-10, 13, 14, 17, 24-26, 34-38, 41,
55, 56, 62
5, 8, 9, 14A, 34-36, 38, 41, 52-56, 58-63
1L, 3, 5, 6-10, 13, 14, 17, 24-26, 34-38, 55, 62
1L, 2-4, 5, 6-10, 13, 14, 17, 24-26, 34-38, 41, 55, 62
1L, 2-4, 5, 6-10, 13-17, 19-29, 34-38, 41, 48A,
52-56, 62, 63
1L, 2-4, 4A, 5, 6-29, 34-38, 36L, 42A, 45A, 46A,
49-51, 62, 63
4A, 11, 12, 49-51

CHANGE: STANDS