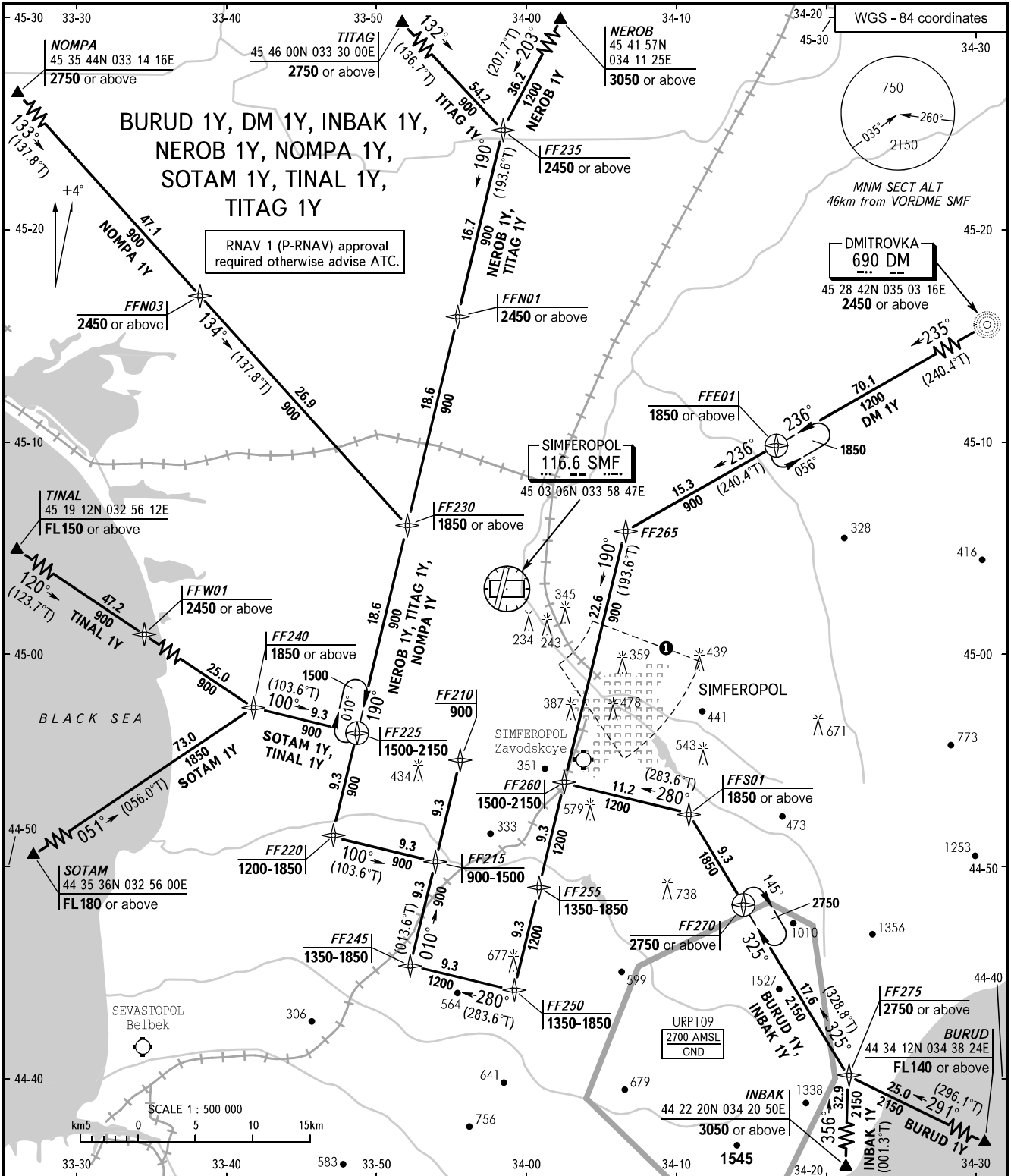


STANDARD ARRIVAL CHART
INSTRUMENT (STAR) - ICAO

TRANSITION
LEVEL: By ATC

SIMFEROPOL, RUSSIA
SIMFEROPOL
RNAV (GNSS) RWY 01



APPROACH TOWER 124.700 135.775
TOWER 120.800

1 Visual manoeuvring (circling) and visual approach not authorized below 900m within sector from R105° to R140°, from D8.0km to D18.0km SMF VORDME.

- WARNING:**
- Do not descend below vertical limits of P, R, D areas until appropriate ATS instruction is given.
 - Speed restriction: MAX IAS 465km/h at or BLW FL100 (3050m).
 - Speed restriction: MAX IAS 407km/h at FF225, FF260.
 - Expect ILS, LOC or NDB approach on FF210 (FAF).
 - For final approach see instrument approach charts URFF ILS or LOC RWY01, URFF NDB RWY01.
 - FF225, FF270 and FFE01 are fly-by for arrival procedures and fly-over for holding patterns.
 - Restricted areas, active by NOTAM, are published in AIP ENR 5 section, AD 2.1 URFF-57.

BEARINGS AND TRACKS ARE MAGNETIC
ALTITUDES, HEIGHTS AND ELEVATIONS ARE IN METRES
DISTANCES ARE IN KILOMETRES

CHANGE: New chart