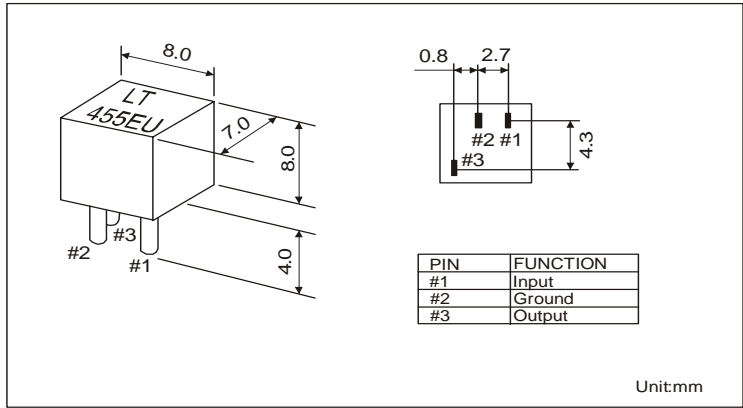


FEATURES

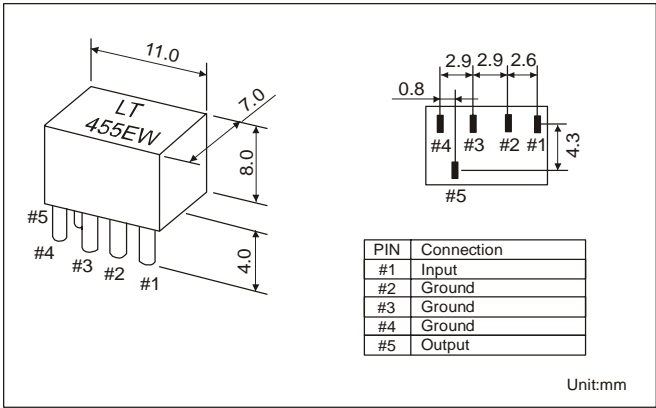
- HIGH RELIABILITY FOR LOW COST
- LOW INSERTION LOSS

PART NUMBER		CENTER FREQUENCY	Insertion Loss	PASS BAND RIPPLE (dB) max.	6 dB BAND WITH (kHz) min.	40 dB BAND WITH (LT455 U)	50 dB BAND WITH (LT455 U)	STOP BAND ATTENUATION fo +-100 kHz(dB)min.		INPUT/OUTPUT IMPEDANCE Ω
								(LT455 U)	(LT455 W)	
LT455BU	LT455BW	455 +-2 kHz	4 dB max.	2	+-15 kHz	+-30 kHz max.	+-30 kHz max.	28	40	1500
LT455CU	LT455CW	455 +-2 kHz	4 dB max.	2	+-12.5 kHz	+-24 kHz max.	+-24 kHz max.	28	40	1500
LT455DU	LT455DW	455 +-1.5 kHz	4 dB max.	2	+-10 kHz	+-20 kHz max.	+-20 kHz max.	28	40	1500
LTT455EU	LT455EW	455 +-1.5 kHz	6 dB max.	2	+-7.5 kHz	+-15 kHz max.	+-15 kHz max.	28	40	1500
LT455FU	LT455FW	455 +-1.5 kHz	6 dB max.	2	+-6 kHz	+-12.5 kHz max.	+-12.5 kHz max.	28	40	2000
LT455GU	LT455GW	455 +-1.5 kHz	6 dB max.	2	+-4.5 kHz	+-10 kHz max.	+-10 kHz max.	28	40	2000
LT455HU	LT455HW	455 +-1 kHz	6 dB max.	2	+-3 kHz	+-9 kHz max.	+-9 kHz max.	28	40	2000
LT455IU	LT455IW	455 +-1 kHz	6 dB max.	2	+-2 kHz	+-7.5 kHz max.	+-7.5 kHz max.	28	40	2000
LT455HTU	LT455HTW	455 +-1 kHz	6 dB max.	2	+-2 kHz	+-9 kHz max.	+-9 kHz max.	35	60	2000

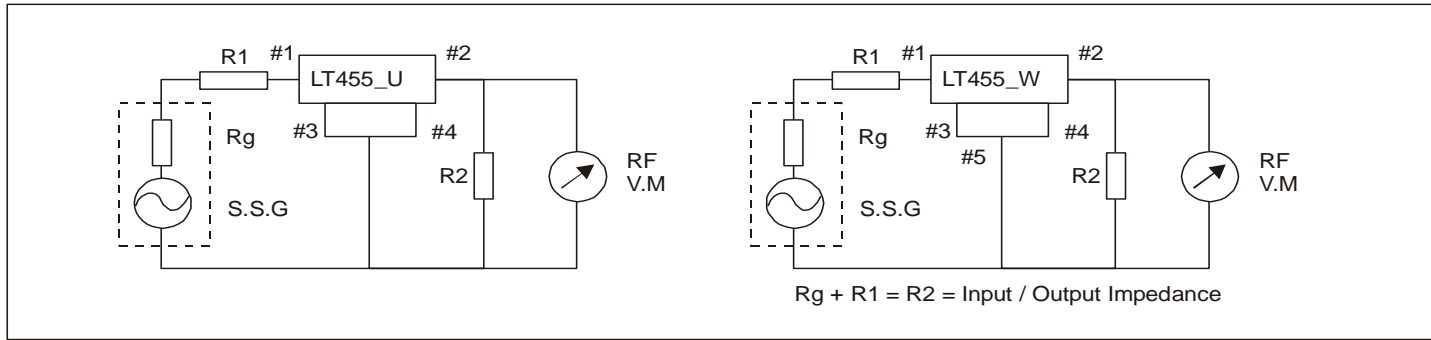
PACKAGE DIMENSIONS OF U VERSION



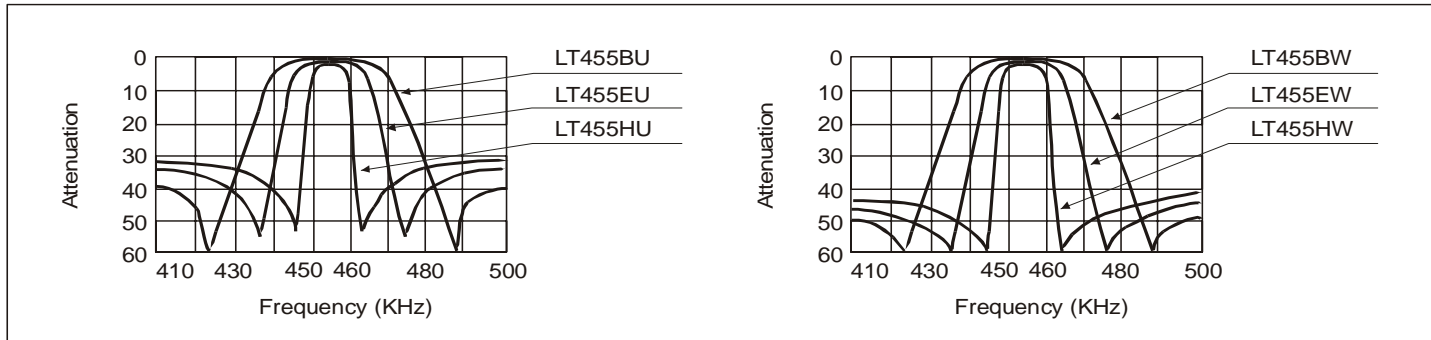
PACKAGE DIMENSIONS OF W VERSION



TEST CIRCUIT

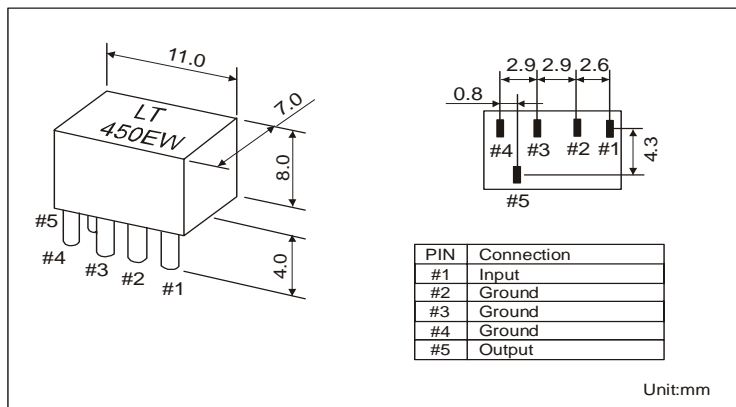


CHARACTERISTICS

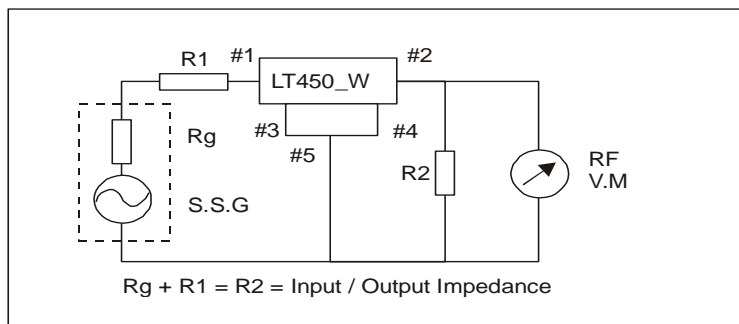


PART NUMBER	CENTER FREQUENCY	Insertion Loss	PASS BAND RIPPLE (dB) max.	6 dB BAND WITH (kHz) max.	50 dB BAND WITH (kHz) max.	STOP BAND ATTENUATION fo ± 100 kHz(dB)min.	INPUT/OUTPUT IMPEDANCE Ω
LT450BW	450 ± 20 kHz	4 dB max.	2	± 15 kHz	± 30 kHz	40	1500
LT450CW	450 ± 20 kHz	4 dB max.	2	± 12.5 kHz	± 24 kHz	40	1500
LT450DW	450 ± 1.5 kHz	4 dB max.	2	± 10 kHz	± 20 kHz	40	1500
LTT450EW	450 ± 1.5 kHz	6 dB max.	2	± 7.5 kHz	± 15 kHz	40	1500
LT450FW	450 ± 1.5 kHz	6 dB max.	2	± 6 kHz	± 12.5 kHz	40	2000
LT450GW	450 ± 1.5 kHz	6 dB max.	2	± 4.5 kHz	± 10 kHz	40	2000
LT450HW	450 ± 1 kHz	6 dB max.	2	± 3 kHz	± 9 kHz	40	2000
LT450IW	450 ± 1 kHz	6 dB max.	2	± 2 kHz	± 7.5 kHz	40	2000
LT450HTW	450 ± 1 kHz	6 dB max.	2	± 3 kHz	± 9 kHz	60	2000

PACKAGE DIMENSIONS



TEST CIRCUIT



CHARACTERISTICS

