

WiNRADiO

Wavebase

Version 1

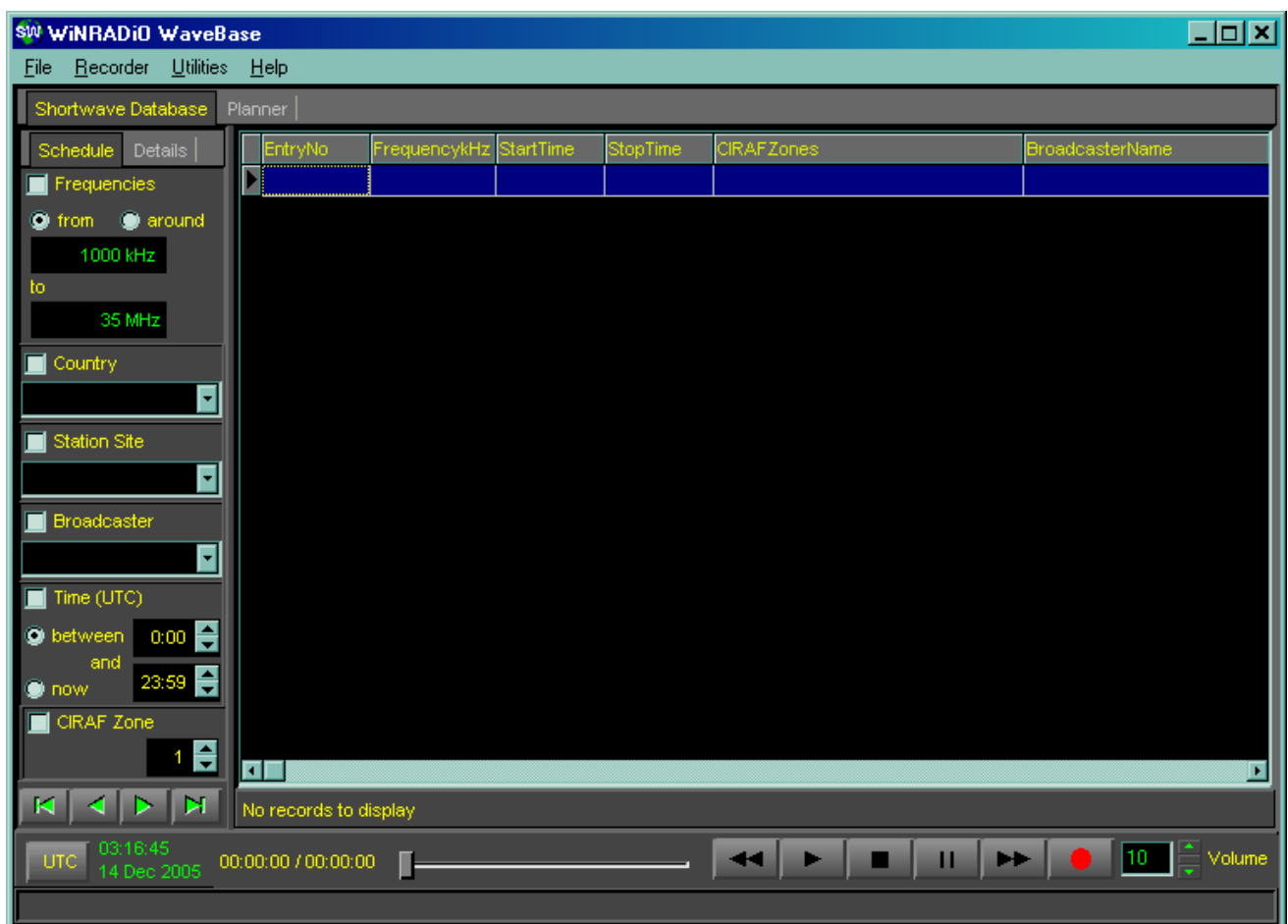
Installation Guide

System requirements

- IBM compatible PC
- A correctly installed WiNRADiO 1500, 3000 or G3 receiver.
- PC clock speed and memory that meets the requirements of your WiNRADiO receiver.
- 5 Megabyte or more of hard disk space
- Microsoft Windows 2000 or later.
- A working Internet connection to download the most recent shortwave schedule

Software Installation

1. Please ensure that the WiNRADiO receiver application software is NOT running. The installation will NOT install Wavebase CORRECTLY if the receiver application is running
2. Insert the Wavebase installation CD into your computer's CD or DVD drive. If your pc is set to Auto run, the Wavebase installation program should start. If not then either
 - use Windows Explorer to navigate to the CD drive and use your mouse to double-click on the file Install.exe
 - press the Start button and then the Run menu item. In the text box beside "Open: " type: [D:\Install](#) (Substitute your CD or DVD drive letter if it is not D)
3. If everything is correct, the setup wizard now starts. Press the "Next" button to continue.
4. You are asked to agree to the conditions in the WiNRADiO License Agreement. If you agree, press the "I Agree" radio button to proceed. Then press the install button
5. Installation should then continue. Press the "Finish" button to complete the basic installation process
6. Power up your WiNRADiO receiver and on the Plugins menu find "Wavebase".
7. Selecting Wavebase on this menu. It should then start as a blank database.



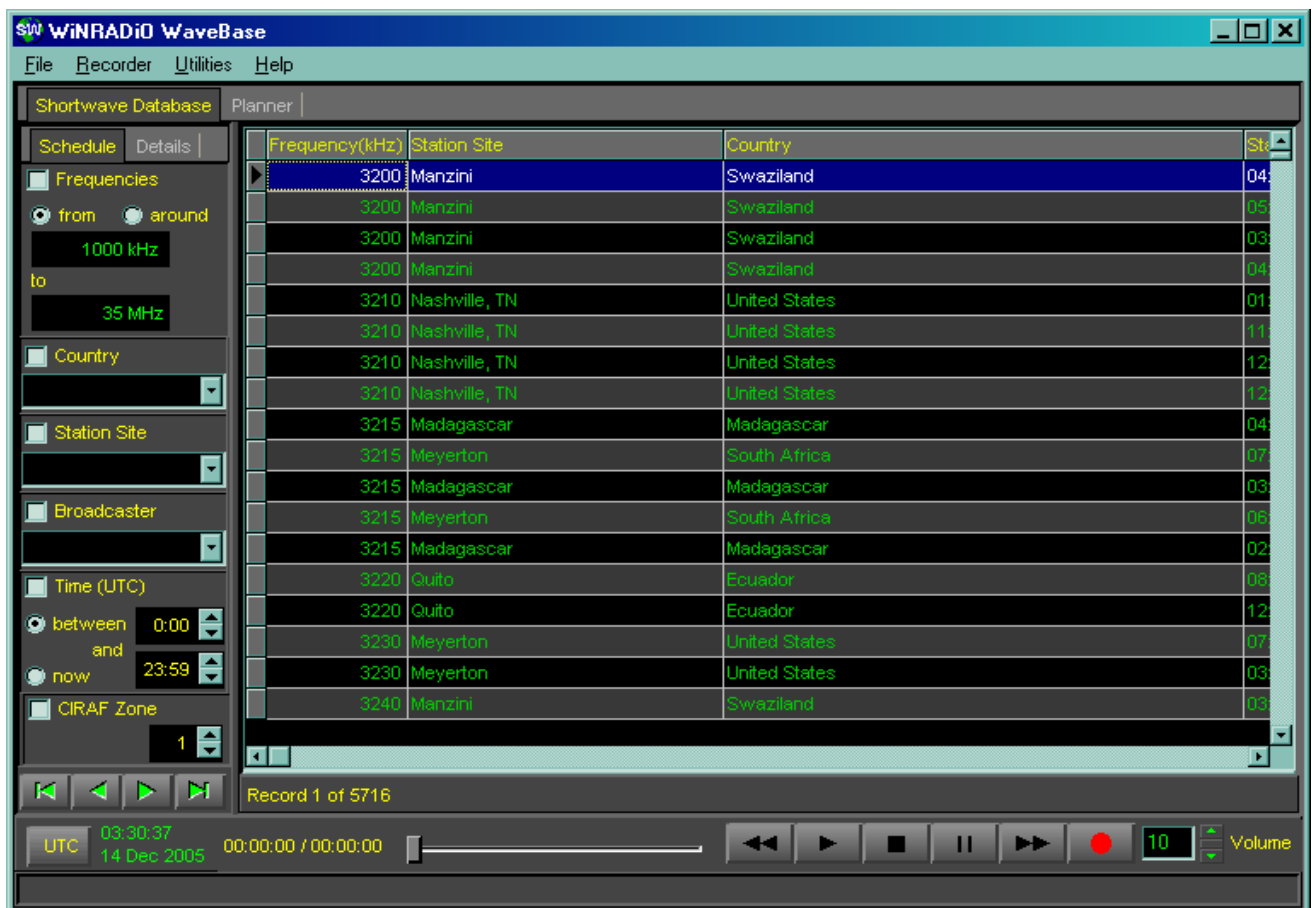
8. For further information on Wavebase, consult the help file. To load your first schedule, continue with the next section.

Installing a shortwave schedule

When using Wavebase for the first time after installation, no shortwave schedule data is loaded. You can load a shortwave schedule in a number of different ways. You can either use the data supplied on your installation CD or, to obtain the very latest data, go on-line so that you can access the HFCC website. Both methods are described below.

Loading data from the installation CD

- Run Wavebase as given in item 6 of the installation process above.
- Use the menu sequence “File -> Open -> database..” and navigate to the folder “[D:\HFCC data](#)”.
- In this folder there are zip and html files. The zip files contain the usual shortwave schedules from past seasons whilst the html files contain DRM schedules.
- If you wish to load a standard shortwave schedule, make sure that the box at the bottom of the file dialog box Files of type is set to “Zip files”. Select the zip file you wish and press Open. Wavebase should now take a short while to import the data.



- If you wish to select a DRM schedule, set the file type to “html files”. Select the html file you wish and press Open.

Connecting to the HFCC Website

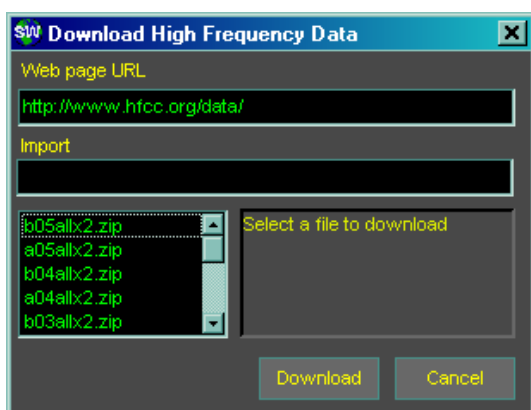
Assuming that Wavebase is correctly installed and you are on-line, you can go to main HFCC website using the main menu “Help -> Links -> HFCC data” or use your browser to do the same. The URL for the shortwave data is (at the time of writing): <http://www.hfcc.org/data/index.html>.

At the time of writing, the DRM for seasons starting from B04 are on separate web pages. For example for season B05 the page is: <http://www.hfcc.org/data/B05drm.html>.

Loading the HFCC Shortwave Schedule

Make sure you have selected the “Shortwave Database” tab. Having found this web page you can do any of the following to obtain an operational schedule:

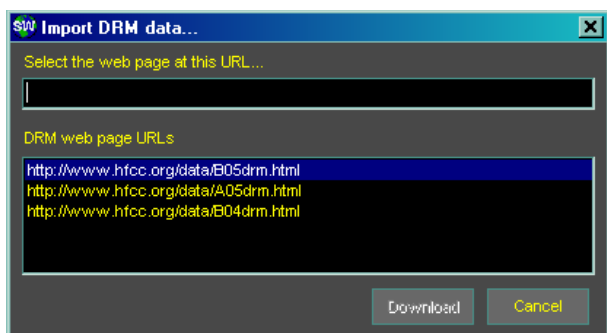
- Use the main menu - “Utilities -> Import HFCC data from -> HFCC Public data website ...” and a dialog box should appear. Depending upon your Internet connection, the available data files should shortly appear as a list. The most recent should be at the top of the list. Using the mouse, or keyboard, select a file name. This should appear as a URL in the “Import” box. Use your mouse or keyboard to activate the “Download” button to download the data, decode and load it into the database.



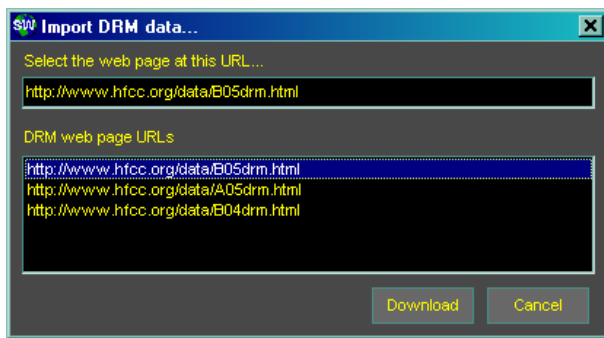
- If you wish to use data from one of the zip files, use your web browser to download the file to a directory or folder of your choosing and use the main menu “File -> Open -> database...” and the dialog box to navigate to the directory and select the downloaded file. It should then be loaded into the database. Perhaps better still, locate the downloaded file using Windows Explorer or some other suitable file handling program and use the mouse to drag the file to the Wavebase table.

Loading the HFCC DRM Schedule

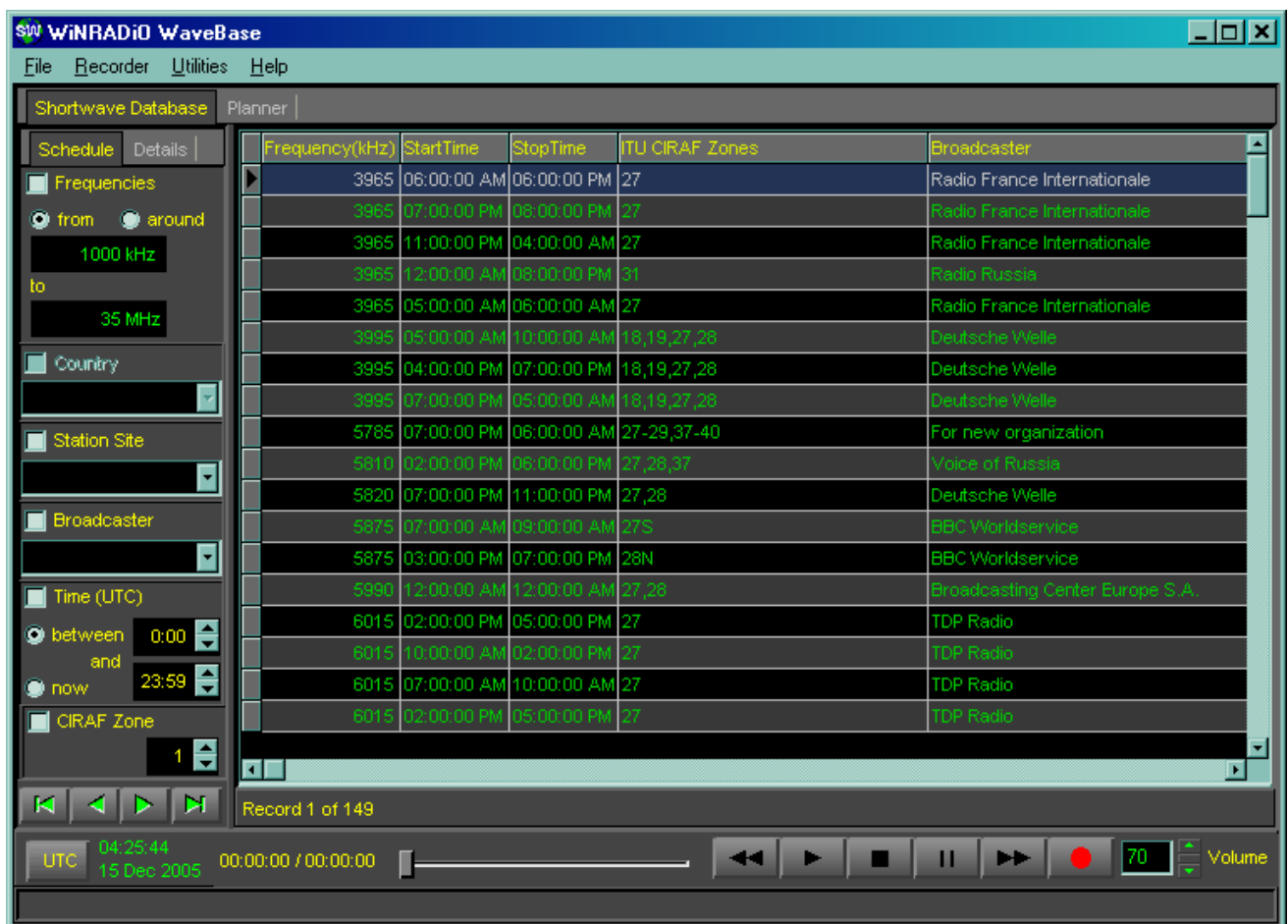
Make sure you have selected the “Shortwave Database” tab. Having found this web page you can do either of the following to obtain an operational schedule:



- Download data from HFCC DRM web pages using the main menu “Utilities -> Import HFCC data from -> HFCC DRM Schedule ...”. A few URLs for web pages containing HFCC DRM schedules should be shown. Select one of these and press the “Download” button. The resulting database does not contain any country data so the country selection controls on the left of the application are disabled.



- Using your browser, copy the HFCC web page as an html file to a directory of your choosing. With the main menu sequence “File -> Open -> database...”, select the html file. The data should be decoded and loaded into the database. Alternatively, find the file using Windows Explorer and use the mouse to drag the html file over the Wavebase database table area.



Copyright© 2004 WiNRADiO Communications.

WiNRADiO Communications

Ph: +61 3 9568 2568

Fax: +61 3 9568 1377

15 Stamford Road, Oakleigh, Victoria 3166, Australia

helpdesk@winradio.com

www.winradio.com