

FT-65R/E FT-25R/E

Memory Programmer

Instruction Manual

The Memory Programmer software provides convenient editing of the FT-65R/E and FT-25R/E memory channel frequencies, channel information and alpha tags, using a personal computer. Also the transceiver parameters and the set (menu) mode items may be edited and configured easily from the computer keyboard.

Table of Contents

Introduction	2	Switching buttons	17
About this manual	2	① Normal	17
Important Notes	2	② PMS	17
System Requirements	3	③ VFO-A	17
Supported Operating Systems	3	④ VFO-B	17
CPU	3	⑤ Home	17
RAM (system memory)	3	⑥ P	17
HDD(Hard Disk)	3	Setting the Items	18
Necessary PC peripheral interfaces	3	① RX Frequency	18
Required Cable	3	② Offset Frequency	18
Trademarks	3	③ Auto Offset	18
The flow of a setup		④ Offset Direction	18
of Memory Programmer	4	⑤ CTCSS Decode	18
Set up the Memory Programmer	5	⑥ CTCSS Encode	18
Installing the USB driver software	5	⑦ DCS Decode	18
Installing the Memory Programmer	8	⑧ DCS Encode	18
Preparation	8	⑨ Channel Name	18
Basic Operation	9	⑩ TX Power	18
Activating the Memory Programmer	9	⑪ Scan	19
Connecting the FT-65R/E or FT-25R/E		⑫ WN	19
to the PC ...	9	⑬ Step	19
Set the Comm Port Number		⑭ SQL Type	19
of the SCU-59/SCU-35	10	⑮ Bank	19
Read the settings from the transceiver ..	10	Troubleshooting	20
Edit the transceiver settings			
on the Memory Programmer	11		
Write the settings to the transceiver	11		
Explanation of			
Memory Programmer operation ...	12		
Initial screen	12		
Menu Bar	13		
File menu	13		
① New	13		
② Open	13		
③ Save	13		
④ Save as	13		
⑤ Exit	13		
Edit menu	14		
① CH. Edit	14		
② Function Setup	14		
③ Bank Channel	14		
Set menu	15		
① Set COM	15		
② Set Initialization	15		
Program menu	15		
① Read From Radio	15		
② Write To Radio	15		
View menu	16		
① Tool Bar	16		
② Status Bar	16		
Version menu	16		
① About FT_65_XXX / About FT_25_XXX ...	16		




Introduction

The Memory Programmer software uses a Personal Computer to quickly enter and save the FT-65R/E and FT-25R/E memory channel frequencies and data. Also the many Set (Menu) Mode settings may be adapted for individual operating preferences. All of the information is saved. The setting data can be imported from the FT-65/FT-25 and edited setting data can be transferred to the FT-65/FT-25.

- ☐ Edit the RX frequencies, memory names, CTCSS/DCS settings, transmit power, etc. that is related to the memory channels.
- ☐ Edit the Memory bank link setting.
- ☐ Configure the various Set (Menu) Mode options on the computer monitor screen.
- ☐ Use handy editing functions, such as copy and paste for each line of memory channel number.

About this manual

This manual contains symbols and conventions to call attention to important information.

Symbols	Description
	This icon indicates cautions and alerts the user should be aware of.
	This icon indicates helpful notes, tips and information.
	This icon indicates other pages containing relevant information.

Important Notes

Before downloading this software, please read the “Important Notes” carefully.

- Copyrights and all other intellectual property rights for the software, as well as the software manual, are the property of YAESU MUSEN CO., LTD.
- The revision, modification, reverse engineering, and decompiling of this software is prohibited. Redistribution, transfer, and resale of downloaded files are also prohibited.
- Do not resell the software or manuals.
- All responsibility for the use of this software lies with the customer. Yaesu cannot be held responsible in any way for any damages or losses, which may be incurred by the customer as a result of using this software.

To use the memory programmer, the software application must first be installed onto the computer.

Read this manual thoroughly and install the software.



Do not connect the transceiver to the computer via the PC Connection Cable until the driver installation process has been completed. Connecting the PC Connection Cable to the computer before the driver installation has been completed may result in the wrong driver being installed and preventing proper operation.

System Requirements

Supported Operating Systems

Microsoft® Windows® 11
Microsoft® Windows® 10
Microsoft® Windows® 8.1

PC Connection Cable	Windows® 11	Windows® 10	Windows® 8.1
SCU-59	✓	✓	✓
SCU-35		✓	✓

NOTE: The SCU-35 can use the same driver software as the SCU-59, but the SCU-35 cannot be used with Windows 11.

CPU

The performance of the CPU must be able to satisfy the operating system requirements.

RAM (system memory)

The capacity of the RAM (system memory) must be more than sufficient to satisfy the operating system requirements.

HDD(Hard Disk)

The capacity of the HDD must be more than sufficient to satisfy the operating system requirements.

In addition to the memory space required to run the operating system, about 50 MB or more of additional memory space is required to run the program.

Necessary PC peripheral interfaces

USB port (USB 1.1 / USB 2.0) or RS-232C interface (COM port)

Required Cable

Programming cable SCU-59 or SCU-35



When using the SCU-59/SCU-35 PC connection cable, install the designated driver on the computer.

Trademarks

Microsoft®, Windows®, Windows® 8.1, Windows® 10 and Windows® 11 are registered trademarks in the United States and other countries.

The flow of a setup of Memory Programmer

The procedure when using Memory Programmer for the first time is as follows:

Installing the USB driver software (Page 5)



Installing the Memory Programmer (Page 8)



Basic Operation (Page 9)

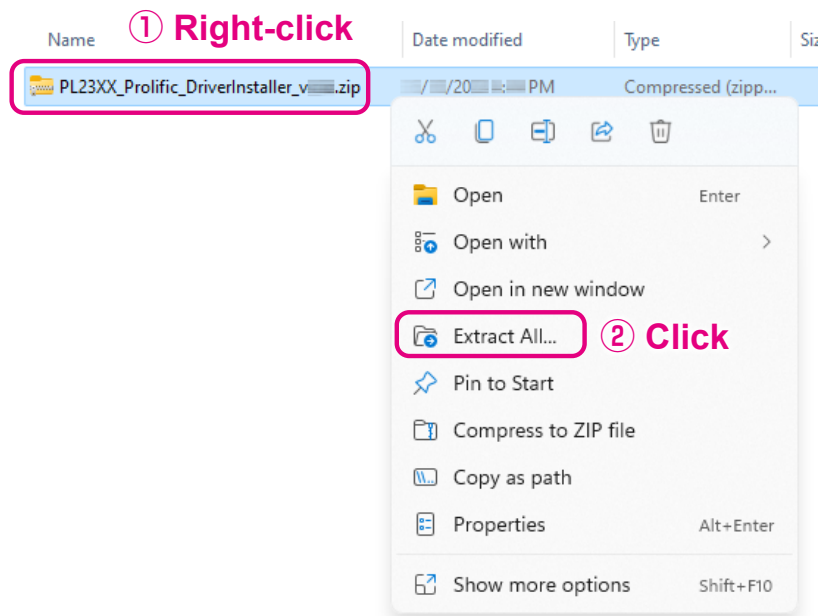


Explanation of Memory Programmer operation (Page 12)

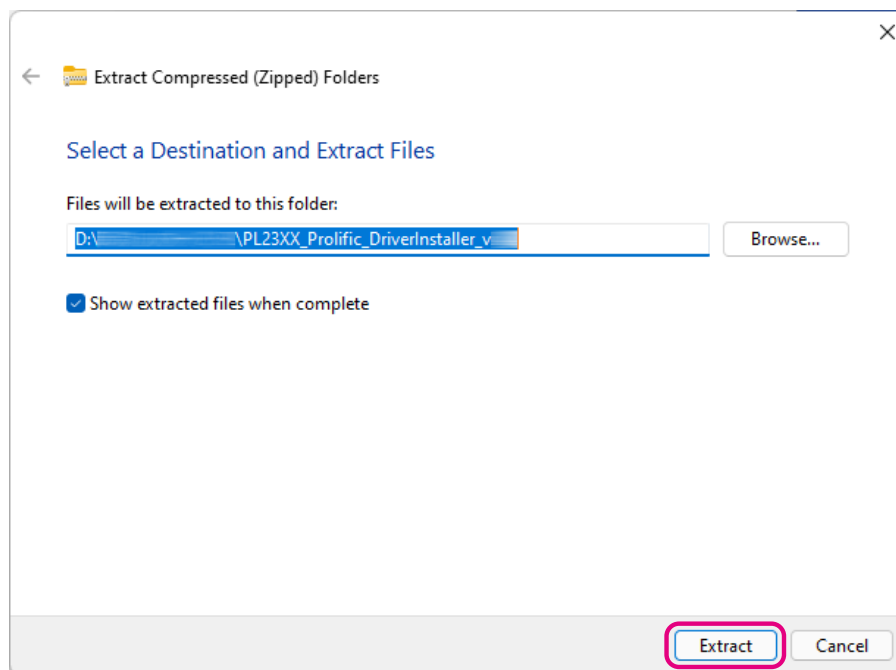
Set up the Memory Programmer

Installing the USB driver software

1. Right-click the downloaded zip file “**PL23XX_Prolific_DriverInstaller_vXXX.zip**”.
2. Click [**Extract All...**].



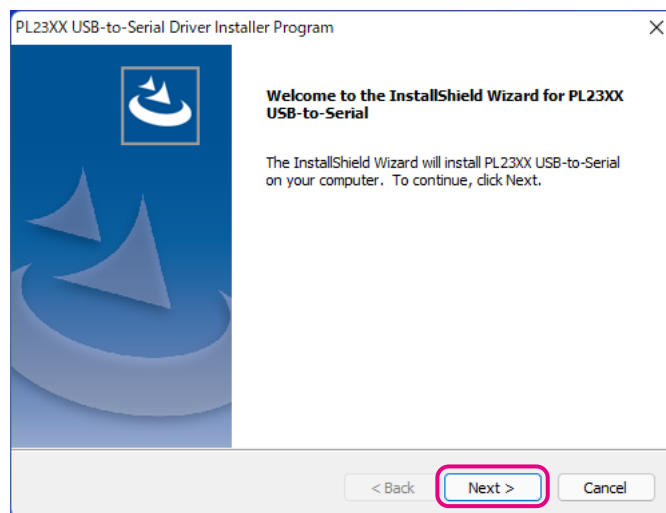
3. Click the [**Extract**] button to unzip the file.
To change the folder to unzip, click the [**Browse...**], then select the folder.



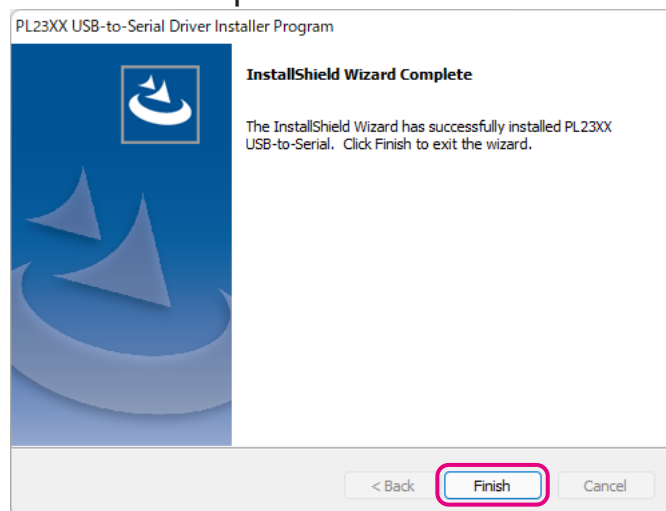
4. Double-click the [PL23XX-M_LogoDriver_Setup_XXX_XXXXXXXXX.exe] file in the unzipped folder.

Name	Date modified	Type	Si
PL23XX_CheckChipVersion_ReadMe.txt		Text Document	
PL23XX_checkChipVersion_v... .exe		Application	
PL23XX_DriverInstallerv_..._ReleaseNote.txt		Text Document	
PL23XX-M_LogoDriver_Setup_... .exe		Application	
PL2303 Windows Driver Manual v... .pdf		Microsoft Edge P...	
PL2303D_Win7_8_10_HWCertReport_... .html		Microsoft Edge H...	
PL2303D_Win11_HWCertReport_... .html		Microsoft Edge H...	
PL2303D_Win11_HWCertReport_... .html		Microsoft Edge H...	
PL2303G_Win7_8_10_HWCertReport_... .html		Microsoft Edge H...	
PL2303G_Win11_HWCertReport_... .html		Microsoft Edge H...	

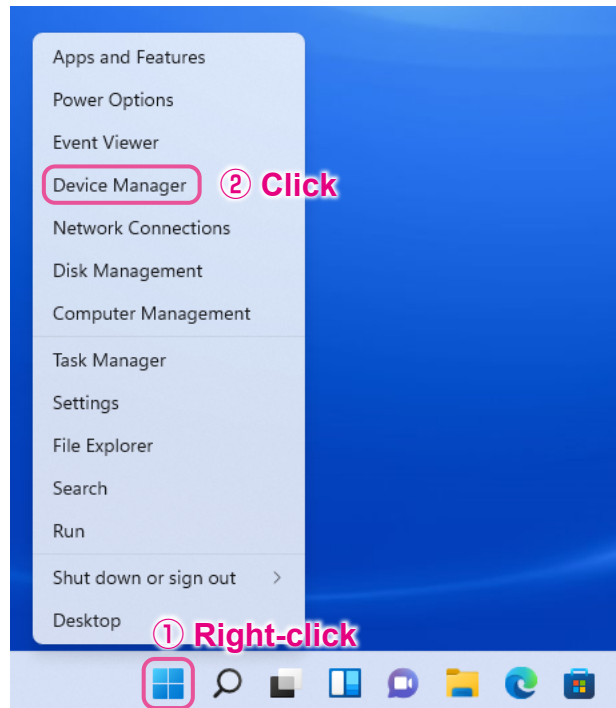
5. If the “**User Account Control**” dialog box opens, click the [Yes] button.
6. Click the [Next>] button.
- The installation will start.



7. Click the [Finish] button to complete the driver installation.



8. Connect the SCU-59/SCU-35 Programming Cable to the USB jack on the computer.
- The SCU-59/SCU-35 Programming Cable will be recognized automatically.
 - To confirm whether the SCU-59/SCU-35 driver is installed correctly, proceed to next page. Confirmation whether the SCU-59/SCU-35 driver is installed.
9. Right-click the Windows [**Start**] button, then click [**Device Manager**].
The Device Manager screen opens.



10. If the [**User Account Control**] dialog box opens, click the [**Yes**].
11. On the Device Manager screen, double-click [**Port (COM & LPT)**].



12. If the following is displayed, the driver installation is completed normally.
- SCU-59:** Prolific PL2303GC USB Serial COM Port (COM**)
- SCU-35:** Prolific USB-to-Serial Comm Port (COM**)
- The COM port number “(COM**)” may be different for each PC environment.
13. It is recommended to check the COM number for later use.



If “!” or “X” is displayed for the port on the Device Manager, uninstall and reinstall the driver.

Installing the Memory Programmer

Preparation

- ❑ Please download the memory programmer from the Yaesu Website for details (<http://www.yaesu.com/>).
- ❑ Start up the computer as an “Administrator” user.
- 1. Extract the downloaded zip file (FT-65_Memory_Programmer_v*.**_***.zip or FT-25_Memory_Programmer_v*.**_***.zip).
- 2. Click [**Extract All...**].
- 3. Double-click the [**FT-65_***_Setup_***.exe**] or [**FT-25_***_Setup_***.exe**] in the same folder that you have unzip the files.
If the “User Account Control” dialog box opens, click the [Yes].
- 4. The dialog box shown to the right will open. Click the [**Next**], to initiate the installation of the memory programmer.
- 5. When the uninstall is finished, the dialog box shown to the right will open. Click the [**Finish**] to complete the Memory Programmer.



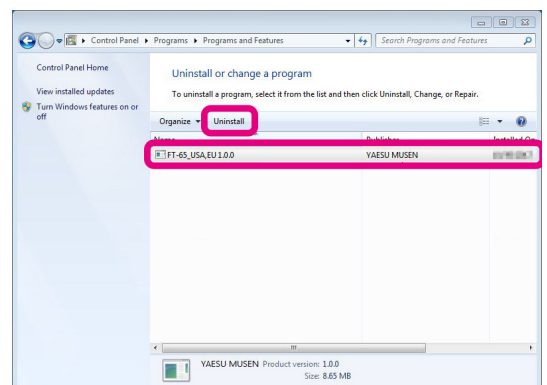
How to Uninstall the Memory Programmer

1. Disconnect the SCU-59/SCU-35 Programming Cable from the PC.
2. Click the [**Start**] ➡ [**Control Panel**] ➡ [**Uninstall a program**].



When [Uninstall a program] is not displayed, click the [Programs and Features].

3. Click on the [**FT-65_*** *.****] or [**FT-25_*** *.****] and then click the [**Uninstall**].
If the [**User Account Control**] dialog box opens, click the [Yes].



Basic Operation

Activating the Memory Programmer

Double-click the [FT-65_***_*.**.exe] or [FT-25_***_*.**.exe] on the desktop to activate the Memory Programmer.

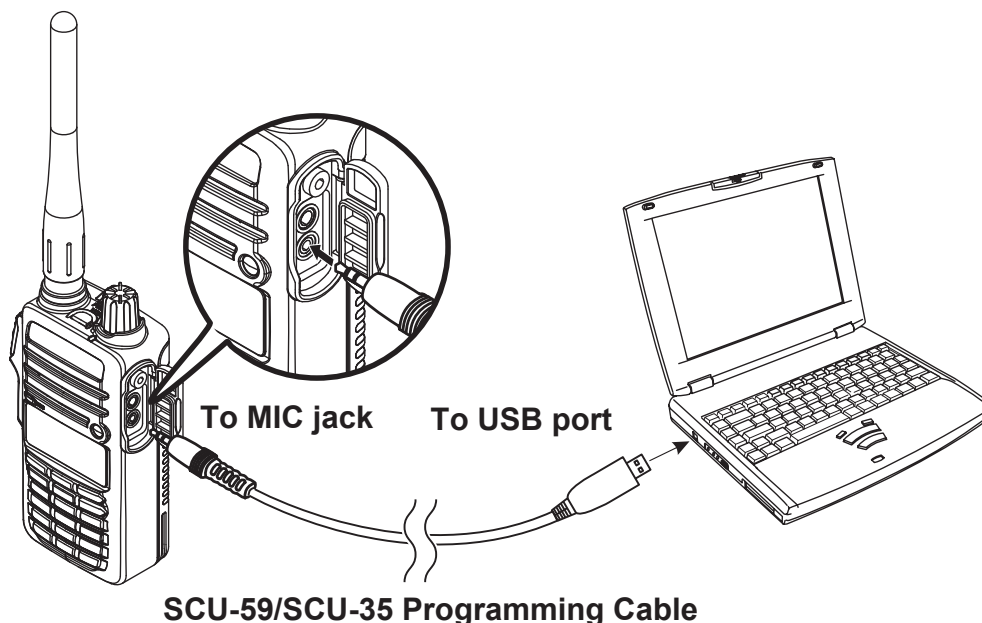


●To close the Memory Programmer

Click [Exit] in the [File] menu to close the Memory Programmer.

Connecting the FT-65R/E or FT-25R/E to the PC

1. Turn the transceiver **OFF**.
2. Connect the SCU-59/SCU-35 Programming Cable to the USB port on the PC and connect the plug to the MIC jack.



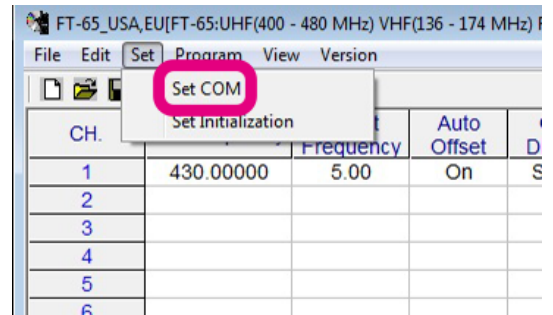
While transmitting and receiving the data, Do not disconnect the SCU-59/SCU-35 Programming cable.

3. Turn the transceiver **ON**.

Set the Comm Port Number of the SCU-59/SCU-35

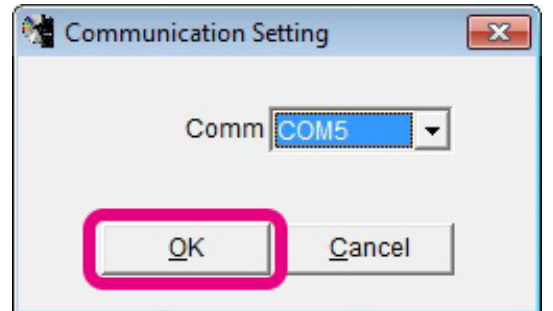
1. Click the [**Set COM**] parameter in the [**Set**] menu.

The “Communication Setting” window will open.



2. Select the Comm Port Number, then click the [**OK**].

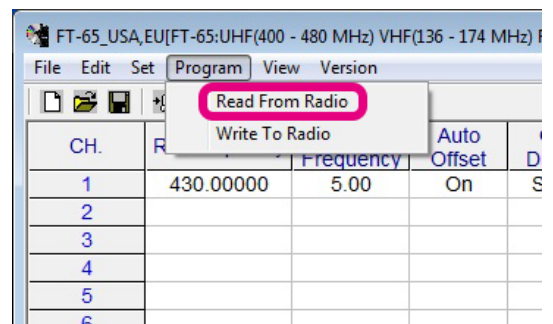
To confirm the Comm Port Number of the SCU-59/SCU-35 driver, see step 12 on “Installing the USB driver software” (Page 7).



Read the settings from the transceiver

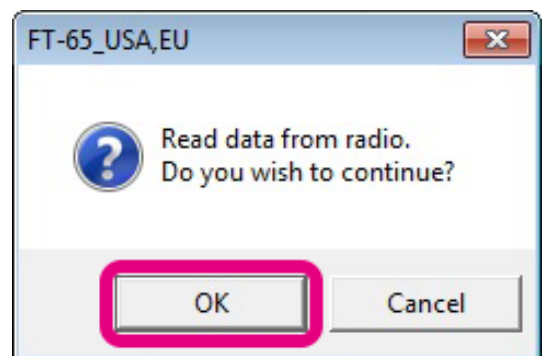
If writing the settings to the transceiver, see “Write the settings to the transceiver”

1. Click the [**Read from Radio**] parameter in the [**Program**] menu.

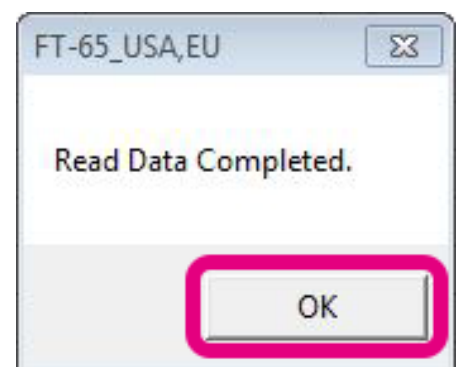


2. The Confirmation popup window will open, then click the [**OK**].

Completion percentage popup window will appear.

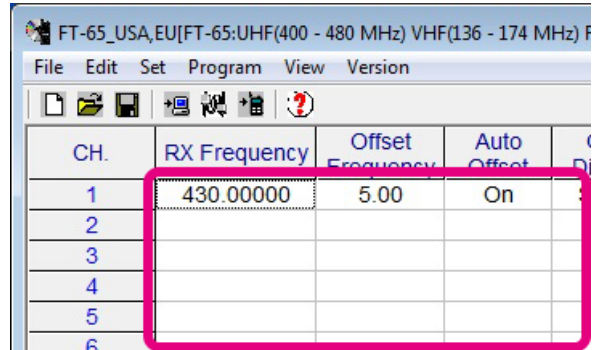


3. If the reading is successful, popup window will open, then click the [**OK**].



Edit the transceiver settings on the Memory Programmer

1. Double-click the cells of the each channels.
2. Input the alphanumeric character or select the settings of each channels.
The channels may be cut and copy-pasted to the desired channel.



CH.	RX Frequency	Offset Frequency	Auto Offset	
1	430.00000	5.00	On	
2				
3				
4				
5				
6				



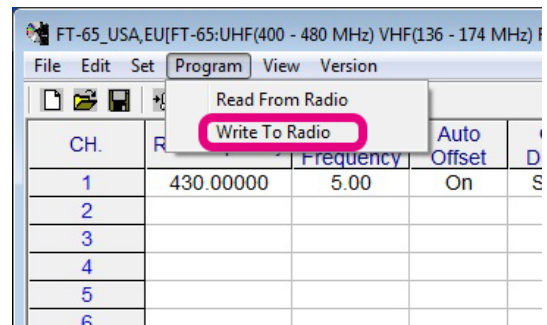
The rows on the each channels may be cut and copy-pasted, but a part of the cells on the each channels may not be cut and copy-pasted.



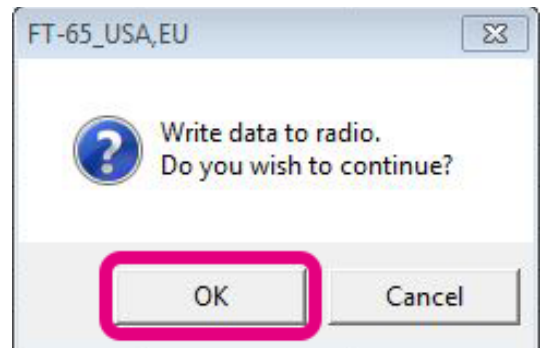
For details on the contents of the each settings, see 12 page.

Write the settings to the transceiver

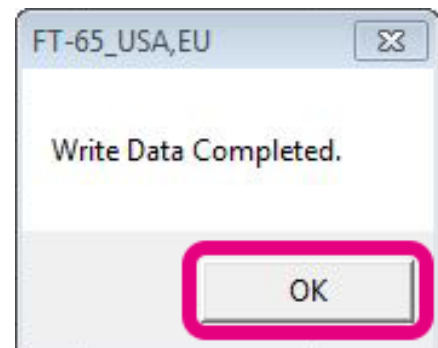
1. Click the **[Write to Radio]** parameter in the **[Program]** menu.



2. The Confirmation popup window will open, then click **[OK]**.
Completion percentage popup window will appear.



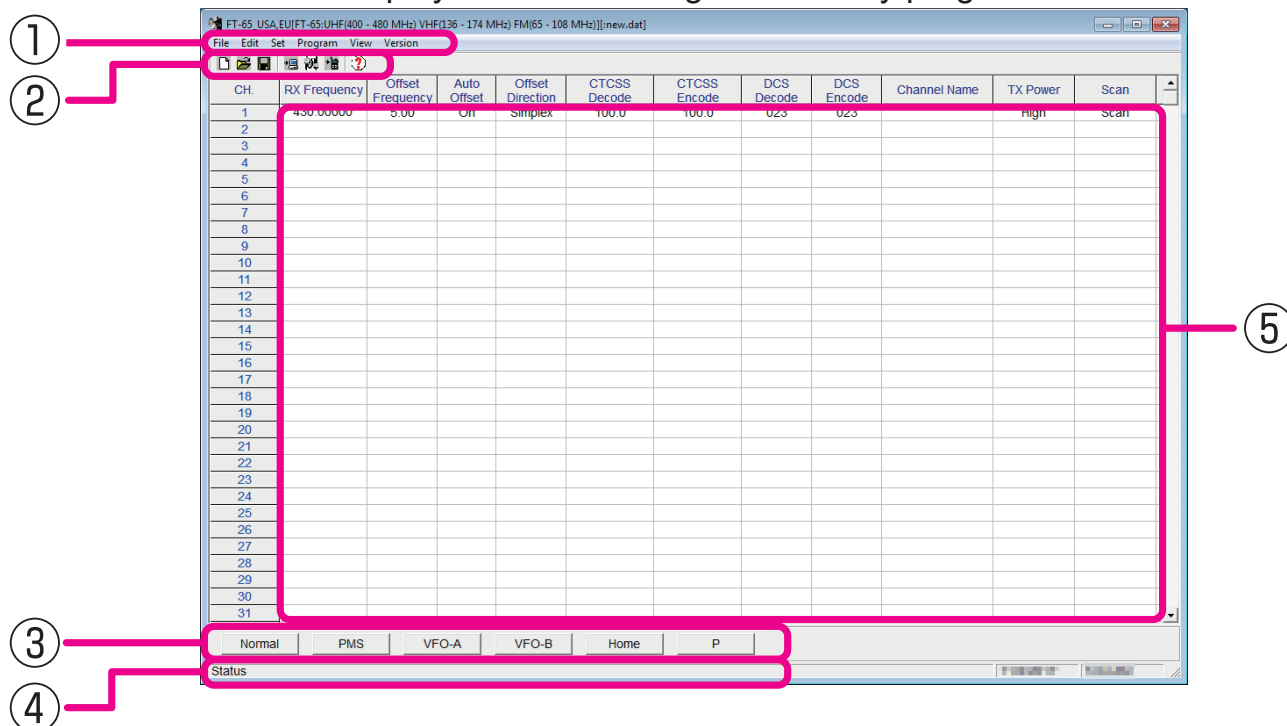
3. If the writing is successful, popup window will open, then click **[OK]**.



Explanation of Memory Programmer operation

Initial screen

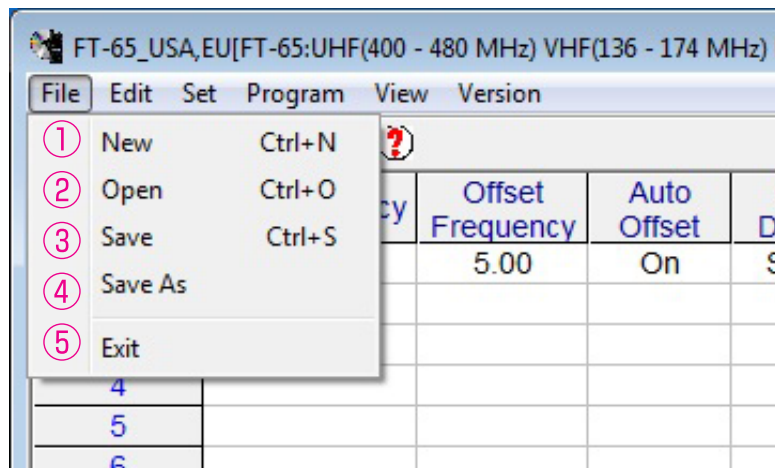
This is the initial screen displayed when starting the memory programmer.



	Name	Description	
①	Menu Bar	Click the menu bar to read from the radio, write to radio, set language , set initialization, etc.	13
②	Tool Bar	Click the [Tool bar] parameter in the [View] menu to display or hide the Tool bar, which includes buttons for some of the most common commands in the Memory Programmer. A check mark appears next to the [Tool bar] parameter when the Tool bar is displayed.	16
③	Switching Button	Click the each button (PMS, VFO-A, etc) to switch to display the each settings.	17
④	Status Bar	Click the [Status Bar] parameter in the [Setting] menu to display or hide the Status Bar, which describes the action to be executed by the selected menu item or depressed tool bar button, and keyboard latch state. A check mark appears next to the [Status Bar] parameter when the Status Bar is displayed.	16
⑤	Set Value Input Screen	Double-click the each channel setting to input the setting values.	18

Menu Bar

File menu



① New

Open a new configuration file from the disk drive.

Click the **[New]** parameter in the **[File]** menu to open the Memory Programmer default configuration file.

The default setting are set in the default configuration file.

② Open

Open a previously-saved configuration file from the disk.

Click the **[Open]** parameter in the **[File]** menu, a pop-up window appears which shows all the saved files in the specified path.

③ Save

Save the programming session to the disk with the same name and directory.

Click the **[Save]** parameter in the **[File]** menu, a caution message will appear. If you agree to over-write the current file, click the **[OK]**.

④ Save as

Save the programming session to the disk with a new name.

Click the **[Save As]** parameter in the **[File]** menu, a pop-up window will appear which displays all the current files saved to the specified path.

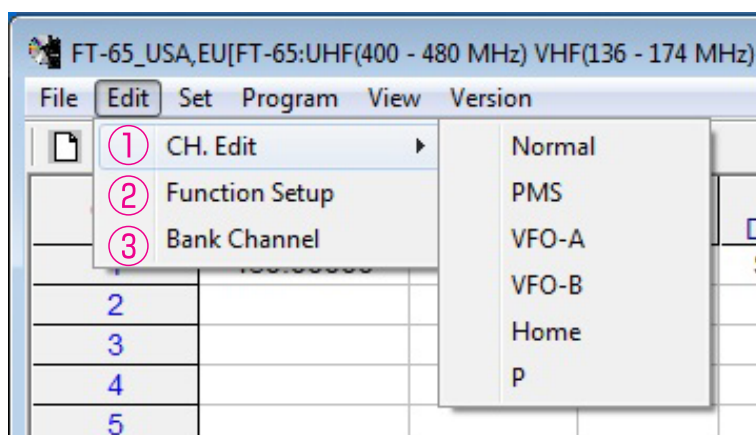
To save the programming session with a new name, type the new file name in the bottom box, then click the **[OK]**.

⑤ Exit

Exit the program and close the window.

If the present configuration has not been saved to disk, you will be asked to confirm whether or not you wish to save it.

Edit menu



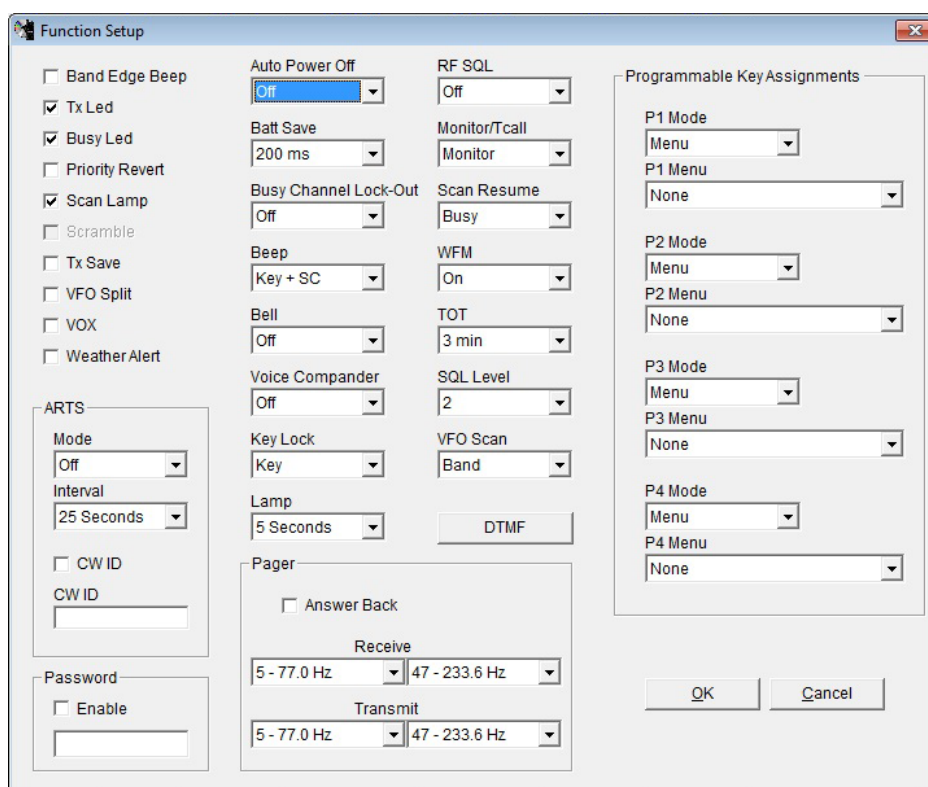
① CH. Edit

Click the key to switch the set value input screen. This key operates the same as switching button.

② Function Setup

This function may customize the various functions of the FT-65/FT-25 according to your preferences.

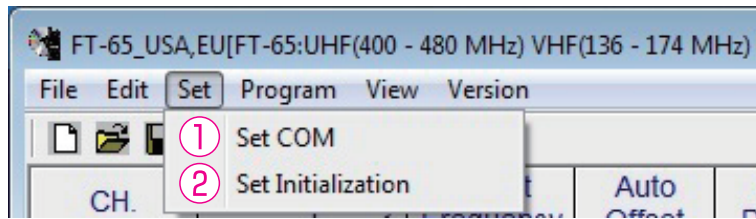
Click the **[Function Setup]** parameter in the **[Edit]** menu to open the “Function Setup” window.



③ Bank Channel

A combination of up to 100 memory channels and preset memory channels can be registered to each of BANK 1 to BANK 10. When recalling a bank, only channels registered to the bank will be recalled.

Set menu



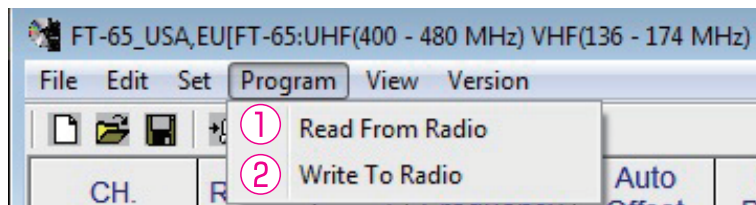
① Set COM

Set the Comm Port number of the SCU-59/SCU-35 PC Connection Cable.

② Set Initialization

Initialize the configuration content of the Memory Programmer.

Program menu



① Read From Radio

This command transfers the settings data of the FT-65/FT-25 to the memory programmer.



Read data may be stored to the computer files, using the “Save” or “Save as” commands in the “File” menu.

For details, see “Read the settings from the transceiver”.

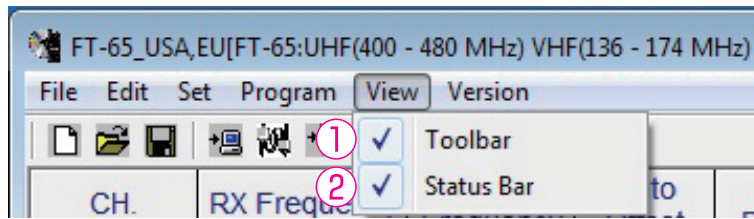
② Write To Radio

This command downloads the Memory Programmer data from the computer to the FT-65/FT-25.

Click the [**Write To Radio**] parameter in the [**Program**] menu. The transmission procedure screen will open.

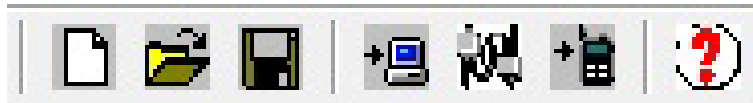
To load a previously created data file to the FT-65/FT-25, click the [**Open**] parameter in the [**File**] menu, and open the desired file before performing the send data operation above.

View menu



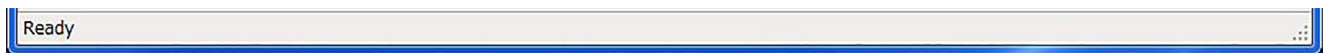
① Tool Bar

Click the [**Toolbar**] parameter in the [**View**] menu to display or hide the Tool bar. The tool bar includes buttons for some of the most often used commands in the Memory programmer. A check mark appears next to the [**Toolbar**] parameter when the Tool bar is displayed.

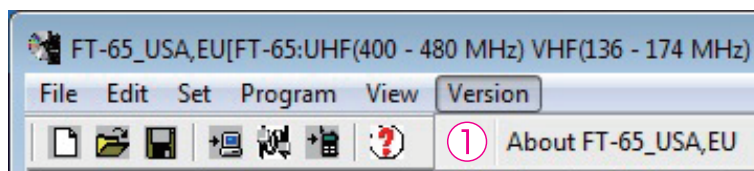


② Status Bar

Click the [**Status Bar**] parameter in the [**View**] menu to display or hide the Status Bar. The “Status Bar” describes the action to be executed by the selected menu item, or the depressed tool bar button, and keyboard latch state. A check mark appears next to the “Status Bar” parameter when the Status Bar is displayed.



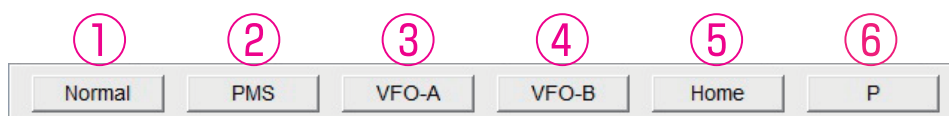
Version menu



① About FT_65_XXX / About FT_25_XXX

Click the [**About FT-65_*****] or [**About FT-25_*****] parameter in the [**Version**] menu to display the version and copyright of the Memory Programmer.

Switching buttons



① **Normal**

Click the [**Normal**] button to change the normal operation settings.

② **PMS**

Click the [**PMS**] button to change the PMS memory channel settings.

③ **VFO-A**

Click the left mouse button on the [**VFO-A**] button to change the default settings of VFO-A(UHF) or VFO-A(VHF).

④ **VFO-B**

Click the [**VFO-B**] button to change the default settings of VFO-B(UHF), VFO-B(VHF) or VFO-B(FM).

⑤ **Home**

Click the [**Home**] button to change the Home channel default settings of the VFO-B(UHF), VFO-B(VHF) or VFO-B(FM).

⑥ **P**

Click the [**P**] button to change the default settings of the P1-P4 keys of the FT-65R/E and FT-25R/E.

Setting the Items

CH.	RX Frequency	Offset Frequency	Auto Offset	Offset Direction	CTCSS Decode	CTCSS Encode	DCS Decode	DCS Encode	Channel Name	TX Power	Sc
1	430.00000	5.00	On	Simplex	100.0	100.0	023	023		High	Sc

① RX Frequency

Enter the RX.

Enter the desired receive frequency.

② Offset Frequency

This item sets the offset frequency for the repeater.

③ Auto Offset

This item sets the auto offset frequency ON or OFF for the repeater.

④ Offset Direction

This item selects the offset direction for the repeater.

- Plus
The transmit frequency is shifted to the plus offset.
- Minus
The transmit frequency is shifted to the minus offset.
- Simplex
The transmit frequency is not shifted.

⑤ CTCSS Decode

To set the tone frequency on receiving.

⑥ CTCSS Encode

To set the tone frequency on transmitting.

⑦ DCS Decode

To set the DCS code on receiving.

⑧ DCS Encode

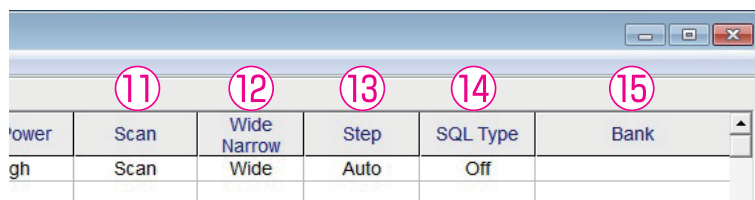
To set the DCS code on transmitting.

⑨ Channel Name

Enter the desired memory name (up to 8 digits).

⑩ TX Power

This item selects the TX Power.



⑪ Scan

Select the scanning condition for receiving channels.

- Scan
Performs scanning according to the set mode basic setting - SCAN RESUME.
- Skip
Skips the designated memory channels during scanning.

⑫ WN

This item selects wide/narrow bandwidth on the FM mode.

- Narrow
Use for narrow bandwidth ham radio and advisory radio.
- Wide
Use for FM broadcasting.

⑬ Step

Sets the channel step for receiving channels. Normally, when a frequency is entered, the optimal channel step will be automatically set according to the frequency.

⑭ SQL Type

This item selects the Tone Encoder and/or Decoder mode.

⑮ Bank

A combination of up to 200 memory channels and preset memory channels can be registered to each of BANK 1 to BANK 10. In the column of each channel, tick the check box of the BANK to register the desired channel.

When recalling a bank, only channels registered to the bank will be recalled.

Troubleshooting

FT-65/FT-25 cannot receive or transmit data to the computer.

The Data transfer does not start.

- Verify that the programming cable is correctly connected to the FT-65/FT-25 data port and to the Computer.
- The battery of the FT-65/FT-25 may be depleted.
Charge the battery or replace the battery with the new one.
- Is the computer COM Port setting correct?
Set the COM Port correctly.

The data transmission has stopped before completion.

- Disconnecting the connection cable or poor contact of the connection cable.
Confirm the cable connection and try again.
- The battery of the FT-65/FT-25 may be depleted.
Charge the battery or replace the battery with the new one.



Copyright 2023
YAESU MUSEN CO., LTD.
All rights reserved.

No portion of this manual may be
reproduced without the permission of
YAESU MUSEN CO., LTD.

YAESU MUSEN CO., LTD.

Omori Bellport Building D-3F
6-26-3 Minami-Oi, Shinagawa-ku, Tokyo, 140-0013, Japan

YAESU USA

6125 Phyllis Drive, Cypress, CA 90630, U.S.A.

YAESU UK

Unit 12, Sun Valley Business Park, Winnall Close
Winchester, Hampshire, SO23 0LB, U.K.