

# ICOM

## CLONING SOFTWARE

### CS-T70

#### INSTRUCTIONS

- ◇ This cloning software is designed to be used for data entry, settings, and cloning for the IC-T70/S70 VHF/UHF DUAL BAND FM TRANSCEIVER.
- ◇ **HELP WINDOW:** CS-T70 has a help window to describe functions and operation.

## ■ System requirements

To use this cloning software, the following hardware and software are required:

### PC

- Microsoft® Windows® 2000/XP/7 or Microsoft® Windows Vista® is installed
- ▨ These instructions are based on using Windows Vista.
- With USB port or RS-232C serial port (D-sub 9-pin)

### Cloning cable

- Optional OPC-478 CLONING CABLE (RS-232C type), or OPC-478UC\* CLONING CABLE (USB type)

### NOTE:

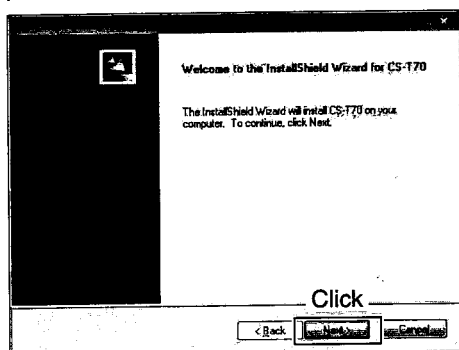
- When using the OPC-478, RS-232C type cloning cable, select "Normal" for the cloning speed setting in [COM port] menu of the cloning software. Otherwise, a cloning error may occur.
- When using the OPC-478UC, USB type cloning cable, you must install a USB driver. The driver is supplied with the OPC-478UC. See the OPC-478UC instruction manual for details.

\* The USB driver, supplied with the OPC-478UC, is not supported by the 64 bit OS.

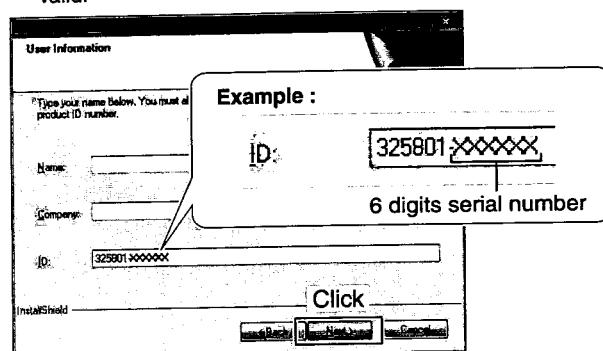
## ■ Software installation

▨ When installing the software, log on as the **administrator**.

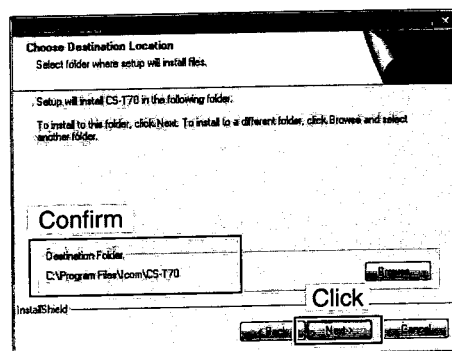
- ① Make sure Windows has completed its start-up, and no other applications are running.
- ② Insert the CD into the CD drive.
  - If "User Account Control" appears, click [Allow] to continue.
- ③ Select the display language type from 'English' or 'Japanese.'
  - The instructions on this side are described using 'English' type. Refer the reverse side for 'Japanese' type description.
- ④ "Welcome to the InstallShield Wizard for CS-T70" appears, and then click [Next>].



- ⑤ "User Information" appears, and then type your name, your company name and the product ID number in the following manner. Then click [Next >].
  - ID number: 325801-(6 digit serial number)
  - e.g. the Serial number on the CD is XXXXXX\*, enter "325801-XXXXXX" as the ID number.
    - \* XXXXXX is shown as an entering example only and it is invalid.

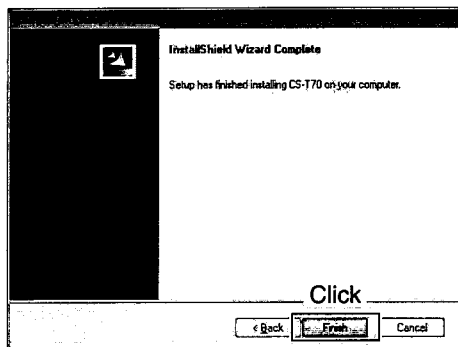


- ⑥ "Choose Destination Location" appears, and then click [Next>].
  - If desired, click [Browse...] to select another destination folder before clicking [Next >].



## ■ Software installation—continued

- ⑦ After the installation is completed, "InstallShield Wizard Complete" appears, and then click [Finish].



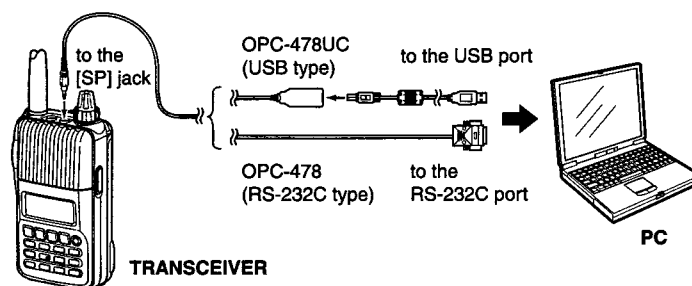
- ⑧ Eject the CD.

- ⑨ A program group 'CS-T70' appears on the program menu, and a 'CS-T70' shortcut icon appears on the desktop.

• You can uninstall the cloning software using the "Uninstall a program" in the Windows Control Panel.

## ■ Connection

All cloning operations are performed from the PC's keyboard. Connect the cloning cable as illustrated below, and then turn the transceiver's power ON.



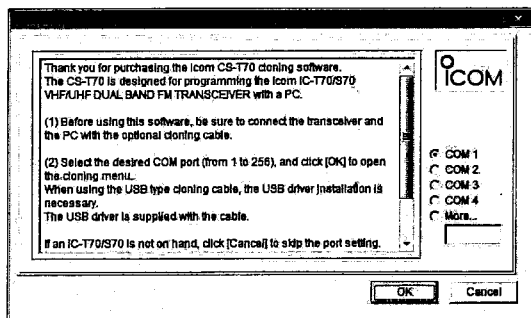
## ■ Initial setup screen

After starting up the CS-T70, the "Initial Setup" appears, as shown below.

Read the instructions thoroughly, and enter the correct COM port number between 1 and 256, then click [OK] to open the programming menu.


Without the transceiver connected, click [Cancel] to skip the COM port setting and continue programming the software.

When programming the software without a transceiver, some items will not appear on the setting screen, and therefore you cannot program them.

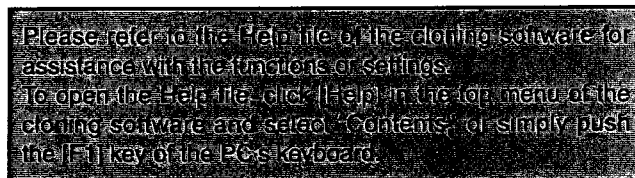


## ■ Programming information

- We recommend that you download all the transceiver's data before starting to enter/edit parameters, even when the transceiver is factory fresh.

Click , or click [Clone] in the top menu of the cloning software, and then select "Read <- TR" to start downloading.

- **NEVER** turn OFF the transceiver and the PC while downloading/uploading cloning data. Otherwise, the data could be lost or deleted.



Icom, Icom Inc. and the Icom logo are registered trademarks of Icom Incorporated (Japan) in Japan, the United States, the United Kingdom, Germany, France, Spain, Russia and/or other countries.

Microsoft, Windows and Windows Vista are registered trademarks of Microsoft Corporation in the United States and/or other countries.

All other products or brands are registered trademarks or trademarks of their respective holders.