

# ICOM

## INSTRUCTIONS

### CLONING SOFTWARE

# CS-FR5000

## ■ Getting started

- ◇ This cloning software is designed to perform data setting and cloning for the IC-FR5000/IC-FR6000 series VHF/UHF REPEATERS.
- ◇ **HELP WINDOW:** CS-FR5000 has a help window to describe functions and operation.

## ■ System requirement

To use this program, the following hardware and software are required:

### PC

- Microsoft® Windows® 2000/XP or Microsoft® Windows Vista™ is installed
- With USB port

### Other item

Optional OPC-1122U\* CLONING CABLE (USB type)

### NOTE:

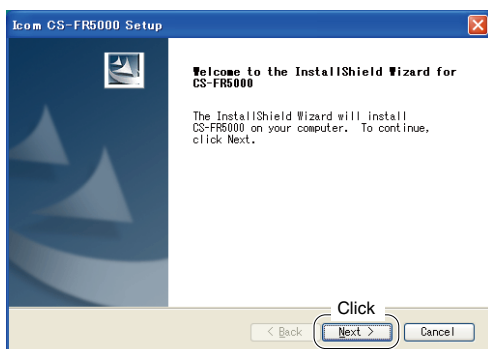
To use the OPC-1122U, USB type cloning cable, USB driver installation is necessary. The driver is supplied with the OPC-1122U. See the OPC-1122U instruction manual for the installation details.

\*The USB driver, supplied with the OPC-1122U, is not supported for Microsoft® Windows Vista™(64 bit).

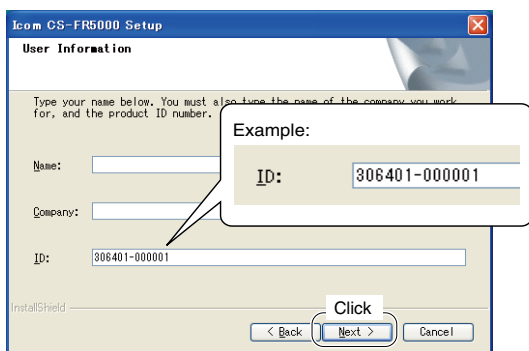
## ■ Software installation

When installing the software, log in as the **administrator**.

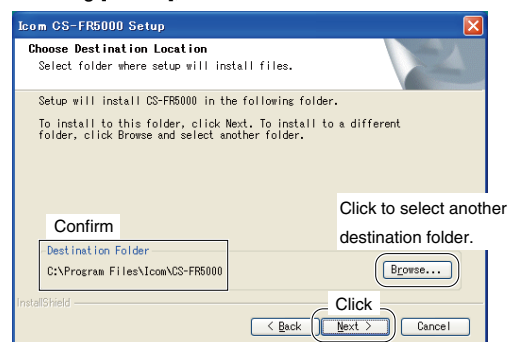
- ① Quit all applications when Windows is running.
- ② Insert the CD into the appropriate CD drive.
- ③ Double-click the "Setup.exe" contained in the CD.
- ④ The "Welcome to the InstallShield Wizard for CS-FR5000" will appear as below. Click [Next>].



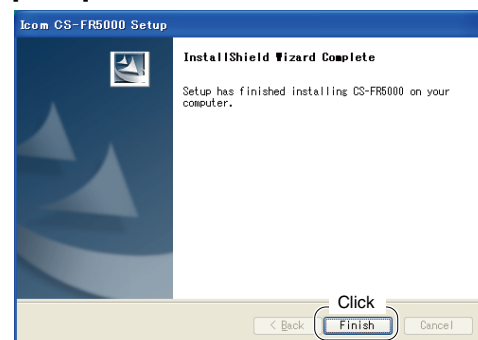
- ⑤ The "User Information" will appear as below, then type your name, your company name and the product ID number with the following manner. Then click [Next >].
  - ID number: 306401-(6 digit serial number)
  - e.g. the serial number on the CD is 000001, enter "306401-000001" as the ID number.



- ⑥ The "Choose Destination Location" will appear as below. Then click [Next>] to install the software to the destination folder. (e.g. C:\Program Files\Icom\CS-FR5000)
  - Click [Browse...] to select another destination folder before clicking [Next >], if desired.



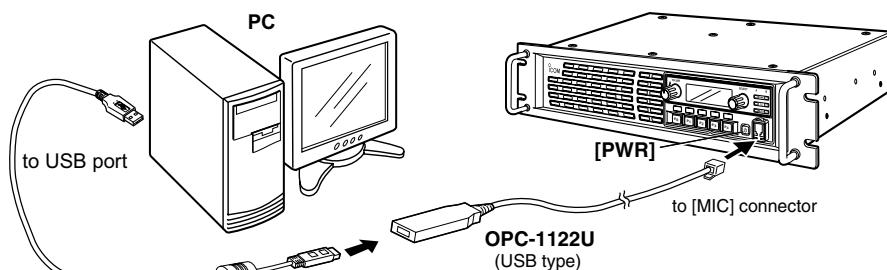
- ⑦ After the installation is completed, the "InstallShield Wizard Complete" will appear as below. Then click [Finish].



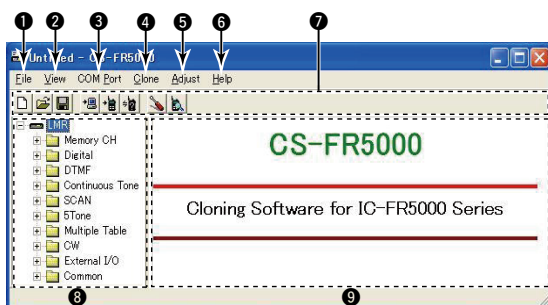
- ⑧ Eject the CD.
- ⑨ Program group 'CS-FR5000' appears in the 'Programs' folder of the start menu, and 'CS-FR5000' short cut icon appears on the desktop screen.
  - To uninstall the cloning software, select the "Control Panel" in the start menu, and click the "Add or Remove Programs." Then, select the program group 'Icom CS-FR5000' and click [Remove].

## ■ Connection

- /// All cloning operations are performed from the computer's keyboard—the operation required on the transceiver side is;
- 1 First, connect the cloning cable as illustrated below.
  - 2 And then push [PWR] to turn power ON.



## ■ Screen Description



### 1 FILE MENU [File]

Used for saving memory channel contents, printing the pre-programmed information or exiting the program, etc.

### 2 VIEW MENU [View]

- Select the displayed font size and language.
- Turn the tool bar indication ON or OFF.

### 3 COM PORT MENU [COM Port]

- Click to display the COM port (1 to 4 and More) setting dialog box.
  - Set the transfer speed (Normal or High).
- /// **NOTE:** 'Check the following' dialog box appears when the COM port is not set correctly.

### 4 CLONING MENU [Clone]

Click to display the cloning menu and cloning information dialog box.

### 5 ADJUST MENU [Adjust]

Click to display the adjust menu and the I/O Check dialog box.

### 6 HELP MENU [Help]

Click to display the help contents and cloning software revision information.

### 7 TOOL BAR

Shortcut buttons appear on the tool bar when the tool bar indication is turned ON in the [View] menu.

### 8 TREE VIEW SCREEN

Click the icon which you want to edit.

### 9 CONTENTS LIST SCREEN

Display the contents list.

## ■ Programming information

- We recommend that you should read out all the repeater's data before start entering/editing parameters even when the repeater is factory fresh.

This avoids rare glitches which might cause programming errors when writing back the altered parameters.

- Double click the desired cell in the contents list screen directory, or rightclick the cell to display the edit menu. Then click [Edit... Enter] to select and change the setting depends on the item.
- Click [Help] to display the help screen for the item.

Edit...	Enter
Copy	Ctrl+C
Paste	Ctrl+V
Up	Ctrl+Up
Down	Ctrl+Down
Clear	
Delete	Del
Insert	Ins
Help	

(Edit menu)

## ■ Cloning items

The **Memory CH**, **Digital**, **DTMF**, **Continuous Tone**, **SCAN**, **5Tone**, **Multiple Table**, **CW**, **External I/O**, **Common Setting** and **Adjust Utility** items allow you to set the repeater customized.

**NOTE:** The above instructions are for reference only. Please refer to the HELP file of the cloning software when you don't understand the function or setting meaning.

Icom, Icom Inc. and the ICOM logo are registered trademarks of Icom Incorporated (Japan) in the United States, the United Kingdom, Germany, France, Spain, Russia and/or other countries. Microsoft, Windows and Windows Vista are either registered trademarks or trademarks of Microsoft Corporation in the United States and/or other countries. All other products or brands are registered trademarks or trademarks of their respective holders.